

Daily Summary for Amman Stock Exchange

VALUE TRADED (JD)

	2023	2024	NET CHANGE	CHANGE (%)
Daily	2,045,391	4,161,079	2,115,688	103.44%
Cumulative (3/11-7/11)	20,511,949	21,630,502	1,118,553	5.45%
Cumulative (2/1-7/11)	1,298,287,778	991,960,183	-306,327,595	-23.59%

NO. OF SHARES TRADED

	2023	2024	NET CHANGE	CHANGE (%)
Daily	1,577,053	2,838,646	1,261,593	80.00%
Cumulative (3/11-7/11)	15,082,765	17,559,902	2,477,137	16.42%
Cumulative (2/1-7/11)	958,547,423	735,752,931	-222,794,492	-23.24%

NO. OF TRANSACTIONS

	2023	2024	NET CHANGE	CHANGE (%)
Daily	1,576	2,489	913	57.93%
Cumulative (3/11-7/11)	10,174	10,655	481	4.73%
Cumulative (2/1-7/11)	596,227	467,903	-128,324	-21.52%

SOME FINANCIAL RATIOS FOR THE ASE (7/11/2024)

SECTOR	P/E	P/BV	DIVIDEND YIELD (%)	TURNOVER (%)
FINANCIAL	8.025	0.745	6.002	0.045
SERVICES	12.626	1.258	6.165	0.041
INDUSTRY	9.051	1.495	7.545	0.057
OVERALL	8.395	0.973	6.864	0.046

STOCK PRICE INDEX WEIGHTED BY FREE FLOAT MARKET CAPITALIZATION (1999=1000)

	WEDNESDAY 06/11/2024	THURSDAY 07/11/2024	% CHANGE	
			DAY BEFORE	YTD
GENERAL	2408.6	2412.8	0.17%	-0.76%
FINANCIAL	2612.1	2611.0	-0.04%	-4.32%
SERVICES	1653.3	1653.7	0.02%	0.59%
INDUSTRY	5036.2	5090.1	1.07%	7.87%

STOCK PRICE INDEX WEIGHTED BY FREE FLOAT MARKET CAPITALIZATION ASE20 (2014=1000)

	1296.5	1298.8	0.18%	-0.77%
--	--------	--------	-------	--------

Total Return Index ASETR (2021=1074)

	1583.5	1586.3	0.18%	6.57%
--	--------	--------	-------	-------

STOCK PRICE INDEX WEIGHTED BY MARKET CAPITALIZATION (1991=1000)

	WEDNESDAY 06/11/2024	THURSDAY 07/11/2024	% CHANGE	
			DAY BEFORE	YTD
GENERAL	4413.1	4438.7	0.58%	0.51%
BANKS	6397.9	6411.0	0.21%	-4.82%
INSURANCE	1378.4	1372.3	-0.44%	6.80%
SERVICES	851.9	854.5	0.31%	-2.75%
INDUSTRY	6157.0	6228.3	1.16%	9.14%

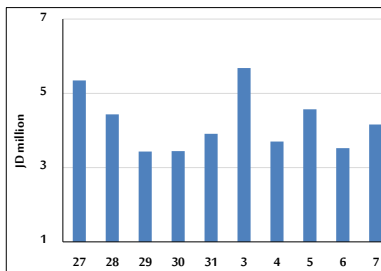
STOCK PRICE MARKET INDEX WEIGHTED BY FREE FLOAT MARKET CAP. (2012=1000)

	WEDNESDAY 06/11/2024	THURSDAY 07/11/2024	% CHANGE	
			DAY BEFORE	YTD
FIRST MARKET	1348.8	1350.7	0.15%	-0.60%
SECOND MARKET	821.8	828.1	0.76%	-4.19%

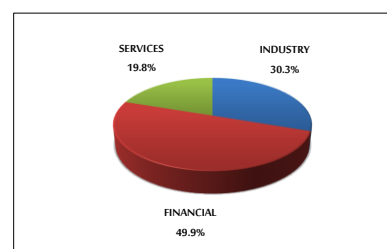
MARKET CAPITALIZATION (JD)

	16,847,012,959	16,937,936,040	0.54%	-0.01%
--	----------------	----------------	-------	--------

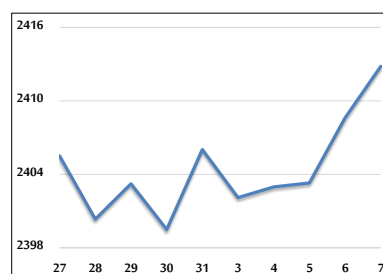
VALUE TRADED FROM 27/10 TO 7/11/2024



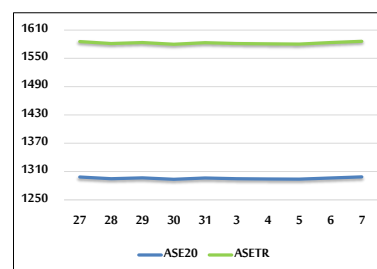
VALUE TRADED BY SECTOR THURSDAY 7/11/2024



GENERAL FREE FLOAT PRICE INDEX FROM 27/10 TO 7/11/2024



ASE20 and ASETR FREE FLOAT PRICE INDEX FROM 27/10 TO 7/11/2024



STOCK PRICE INDEX FROM 27/10 TO 7/11/2024

