

Daily Summary for Amman Stock Exchange

VALUE TRADED (JD)

	2023	2024	NET CHANGE	CHANGE (%)
Daily	3,442,147	3,521,784	79,637	2.31%
Cumulative (3/11-6/11)	18,466,558	17,469,423	-997,135	-5.40%
Cumulative (2/1-6/11)	1,296,242,387	987,799,104	-308,443,283	-23.80%

NO. OF SHARES TRADED

	2023	2024	NET CHANGE	CHANGE (%)
Daily	2,442,669	2,855,528	412,859	16.90%
Cumulative (3/11-6/11)	13,505,712	14,721,256	1,215,544	9.00%
Cumulative (2/1-6/11)	956,970,370	732,914,285	-224,056,085	-23.41%

NO. OF TRANSACTIONS

	2023	2024	NET CHANGE	CHANGE (%)
Daily	1,853	2,066	213	11.49%
Cumulative (3/11-6/11)	8,598	8,166	-432	-5.02%
Cumulative (2/1-6/11)	594,651	465,414	-129,237	-21.73%

SOME FINANCIAL RATIOS FOR THE ASE (6/11/2024)

SECTOR	P/E	P/BV	DIVIDEND YIELD (%)	TURNOVER (%)
FINANCIAL	8.009	0.743	6.014	0.045
SERVICES	12.614	1.257	6.171	0.049
INDUSTRY	8.941	1.477	7.637	0.049
OVERALL	8.347	0.968	6.904	0.046

STOCK PRICE INDEX WEIGHTED BY FREE FLOAT MARKET CAPITALIZATION (1999=1000)

	TUESDAY 05/11/2024	WEDNESDAY 06/11/2024	% CHANGE	
			DAY BEFORE	YTD
GENERAL	2403.3	2408.6	0.22%	-0.93%
FINANCIAL	2606.0	2612.1	0.23%	-4.28%
SERVICES	1653.2	1653.3	0.01%	0.56%
INDUSTRY	5013.7	5036.2	0.45%	6.73%

STOCK PRICE INDEX WEIGHTED BY FREE FLOAT MARKET CAPITALIZATION ASE20 (2014=1000)

	1293.9	1296.5	0.19%	-0.94%
--	--------	--------	-------	--------

Total Return Index ASETR (2021=1074)

	1580.4	1583.5	0.19%	6.38%
--	--------	--------	-------	-------

STOCK PRICE INDEX WEIGHTED BY MARKET CAPITALIZATION (1991=1000)

	TUESDAY 05/11/2024	WEDNESDAY 06/11/2024	% CHANGE	
			DAY BEFORE	YTD
GENERAL	4399.7	4413.1	0.31%	-0.07%
BANKS	6377.5	6397.9	0.32%	-5.01%
INSURANCE	1374.0	1378.4	0.32%	7.27%
SERVICES	850.2	851.9	0.19%	-3.05%
INDUSTRY	6137.2	6157.0	0.32%	7.89%

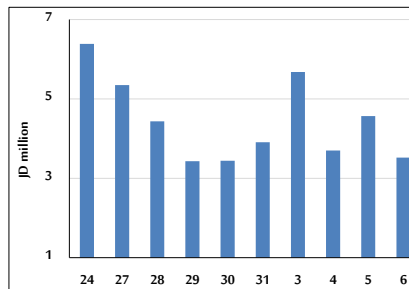
STOCK PRICE MARKET INDEX WEIGHTED BY FREE FLOAT MARKET CAP. (2012=1000)

	TUESDAY 05/11/2024	WEDNESDAY 06/11/2024	% CHANGE	
			DAY BEFORE	YTD
FIRST MARKET	1346.6	1348.8	0.16%	-0.75%
SECOND MARKET	813.0	821.8	1.08%	-4.91%

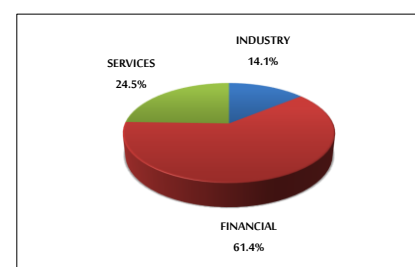
MARKET CAPITALIZATION (JD)

	16,799,119,520	16,847,012,959	0.29%	-0.54%
--	----------------	----------------	-------	--------

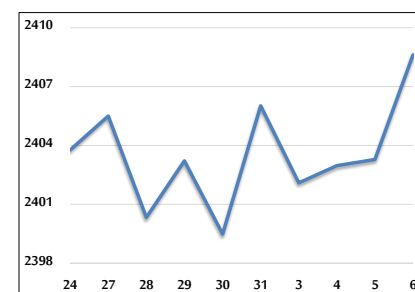
VALUE TRADED FROM 24/10 TO 6/11/2024



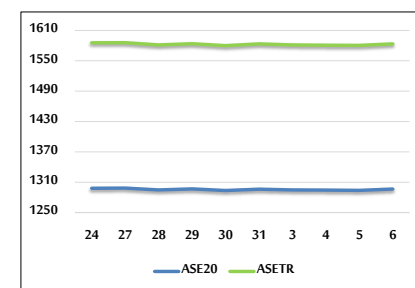
VALUE TRADED BY SECTOR WEDNESDAY 6/11/2024



GENERAL FREE FLOAT PRICE INDEX FROM 24/10 TO 6/11/2024



ASE20 and ASETR FREE FLOAT PRICE INDEX FROM 24/10 TO 6/11/2024



STOCK PRICE INDEX FROM 24/10 TO 6/11/2024

