

Daily Summary for Amman Stock Exchange

VALUE TRADED (JD)

	2023	2024	NET CHANGE	CHANGE (%)
Daily	4,679,815	3,905,584	-774,231	-16.54%
Cumulative (3/11-24/11)	54,303,699	76,027,072	21,723,373	40.00%
Cumulative (2/1-24/11)	1,332,079,528	1,046,356,753	-285,722,775	-21.45%

NO. OF SHARES TRADED

	2023	2024	NET CHANGE	CHANGE (%)
Daily	6,143,263	4,395,751	-1,747,512	-28.45%
Cumulative (3/11-24/11)	53,660,783	65,169,567	11,508,784	21.45%
Cumulative (2/1-24/11)	997,125,441	783,362,596	-213,762,845	-21.44%

NO. OF TRANSACTIONS

	2023	2024	NET CHANGE	CHANGE (%)
Daily	2,659	2,187	-472	-17.75%
Cumulative (3/11-24/11)	33,762	36,173	2,411	7.14%
Cumulative (2/1-24/11)	619,815	493,421	-126,394	-20.39%

SOME FINANCIAL RATIOS FOR THE ASE (24/11/2024)

SECTOR	P/E	P/BV	DIVIDEND YIELD (%)	TURNOVER (%)
FINANCIAL	7.995	0.745	6.019	0.052
SERVICES	12.603	1.256	6.177	0.079
INDUSTRY	9.334	1.549	7.278	0.150
OVERALL	8.505	0.986	6.775	0.071

STOCK PRICE INDEX WEIGHTED BY FREE FLOAT MARKET CAPITALIZATION (1999=1000)

	THURSDAY 21/11/2024	SUNDAY 24/11/2024	% CHANGE	
			DAY BEFORE	YTD
GENERAL	2425.6	2421.6	-0.17%	-0.40%
FINANCIAL	2605.9	2603.2	-0.10%	-4.61%
SERVICES	1644.0	1645.5	0.10%	0.09%
INDUSTRY	5304.5	5275.9	-0.54%	11.81%

STOCK PRICE INDEX WEIGHTED BY FREE FLOAT MARKET CAPITALIZATION ASE20 (2014=1000)

	1306.5	1304.2	-0.18%	-0.36%
--	--------	--------	--------	--------

Total Return Index ASETR (2021=1074)

	1595.7	1592.9	-0.18%	7.01%
--	--------	--------	--------	-------

STOCK PRICE INDEX WEIGHTED BY MARKET CAPITALIZATION (1991=1000)

	THURSDAY 21/11/2024	SUNDAY 24/11/2024	% CHANGE	
			DAY BEFORE	YTD
GENERAL	4500.1	4486.5	-0.30%	1.59%
BANKS	6381.3	6374.3	-0.11%	-5.36%
INSURANCE	1387.4	1387.4	0.00%	7.97%
SERVICES	853.9	853.5	-0.05%	-2.86%
INDUSTRY	6483.7	6444.0	-0.61%	12.92%

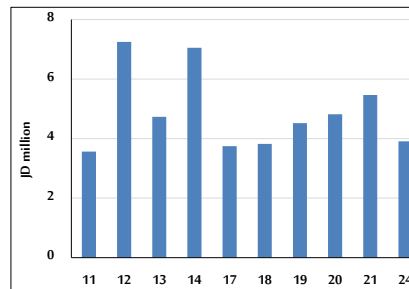
STOCK PRICE MARKET INDEX WEIGHTED BY FREE FLOAT MARKET CAP. (2012=1000)

	THURSDAY 21/11/2024	SUNDAY 24/11/2024	% CHANGE	
			DAY BEFORE	YTD
FIRST MARKET	1358.1	1355.8	-0.17%	-0.23%
SECOND MARKET	836.0	835.9	-0.01%	-3.28%

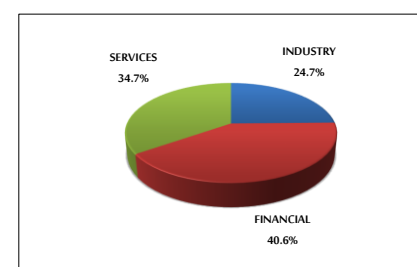
MARKET CAPITALIZATION (JD)

	17,184,209,101	17,137,809,600	-0.27%	1.17%
--	----------------	----------------	--------	-------

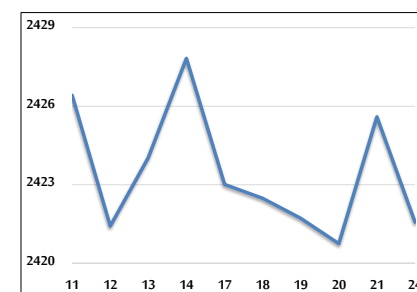
VALUE TRADED FROM 11/11 TO 24/11/2024



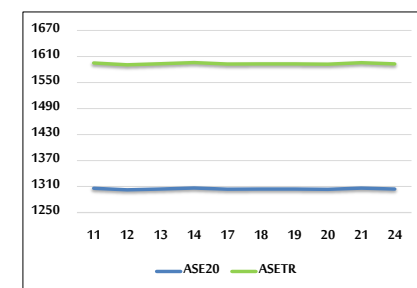
VALUE TRADED BY SECTOR SUNDAY 24/11/2024



GENERAL FREE FLOAT PRICE INDEX FROM 11/11 TO 24/11/2024



ASE20 and ASETR FREE FLOAT PRICE INDEX FROM 11/11 TO 24/11/2024



STOCK PRICE INDEX FROM 11/11 TO 24/11/2024

