

Daily Summary for Amman Stock Exchange

VALUE TRADED (JD)

	2023	2024	NET CHANGE	CHANGE (%)
Daily	4,904,646	5,466,119	561,473	11.45%
Cumulative (3/11-21/11)	49,623,884	72,121,488	22,497,604	45.34%
Cumulative (2/1-21/11)	1,327,399,713	1,042,451,169	-284,948,544	-21.47%

NO. OF SHARES TRADED

	2023	2024	NET CHANGE	CHANGE (%)
Daily	6,860,582	5,005,431	-1,855,151	-27.04%
Cumulative (3/11-21/11)	47,517,520	60,773,816	13,256,296	27.90%
Cumulative (2/1-21/11)	990,982,178	778,966,845	-212,015,333	-21.39%

NO. OF TRANSACTIONS

	2023	2024	NET CHANGE	CHANGE (%)
Daily	2,718	2,425	-293	-10.78%
Cumulative (3/11-21/11)	31,103	33,986	2,883	9.27%
Cumulative (2/1-21/11)	617,156	491,234	-125,922	-20.40%

SOME FINANCIAL RATIOS FOR THE ASE (21/11/2024)

SECTOR	P/E	P/BV	DIVIDEND YIELD (%)	TURNOVER (%)
FINANCIAL	8.003	0.745	6.012	0.055
SERVICES	12.593	1.255	6.181	0.116
INDUSTRY	9.393	1.559	7.232	0.154
OVERALL	8.531	0.989	6.755	0.081

STOCK PRICE INDEX WEIGHTED BY FREE FLOAT MARKET CAPITALIZATION (1999=1000)

	WEDNESDAY 20/11/2024	THURSDAY 21/11/2024	% CHANGE	
			DAY BEFORE	YTD
GENERAL	2420.8	2425.6	0.20%	-0.23%
FINANCIAL	2600.5	2605.9	0.21%	-4.51%
SERVICES	1641.8	1644.0	0.13%	0.00%
INDUSTRY	5293.0	5304.5	0.22%	12.41%

STOCK PRICE INDEX WEIGHTED BY FREE FLOAT MARKET CAPITALIZATION ASE20 (2014=1000)

	1303.6	1306.5	0.22%	-0.18%
--	--------	--------	-------	--------

Total Return Index ASETR (2021=1074)

	1592.1	1595.7	0.22%	7.20%
--	--------	--------	-------	-------

STOCK PRICE INDEX WEIGHTED BY MARKET CAPITALIZATION (1991=1000)

	WEDNESDAY 20/11/2024	THURSDAY 21/11/2024	% CHANGE	
			DAY BEFORE	YTD
GENERAL	4493.7	4500.1	0.14%	1.90%
BANKS	6379.0	6381.3	0.04%	-5.26%
INSURANCE	1385.8	1387.4	0.11%	7.97%
SERVICES	852.8	853.9	0.14%	-2.81%
INDUSTRY	6466.3	6483.7	0.27%	13.62%

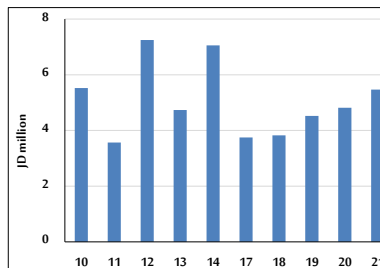
STOCK PRICE MARKET INDEX WEIGHTED BY FREE FLOAT MARKET CAP. (2012=1000)

	WEDNESDAY 20/11/2024	THURSDAY 21/11/2024	% CHANGE	
			DAY BEFORE	YTD
FIRST MARKET	1355.7	1358.1	0.18%	-0.06%
SECOND MARKET	831.5	836.0	0.54%	-3.27%

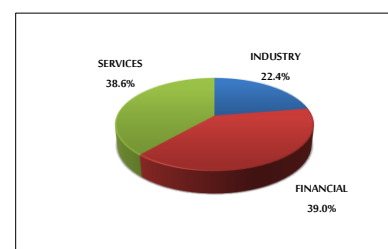
MARKET CAPITALIZATION (JD)

	17,160,849,783	17,184,209,101	0.14%	1.45%
--	----------------	----------------	-------	-------

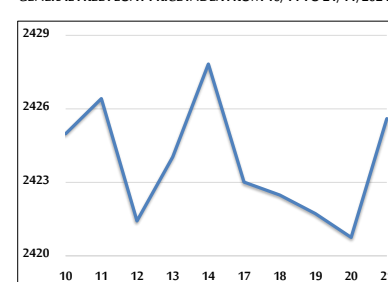
VALUE TRADED FROM 10/11 TO 21/11/2024



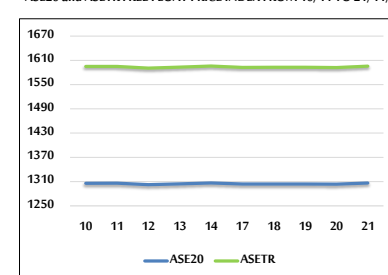
VALUE TRADED BY SECTOR THURSDAY 21/11/2024



GENERAL FREE FLOAT PRICE INDEX FROM 10/11 TO 21/11/2024



ASE20 and ASETR FREE FLOAT PRICE INDEX FROM 10/11 TO 21/11/2024



STOCK PRICE INDEX FROM 10/11 TO 21/11/2024

