

Daily Summary for Amman Stock Exchange

VALUE TRADED (JD)

	2023	2024	NET CHANGE	CHANGE (%)
Daily	2,929,850	4,815,298	1,885,448	64.35%
Cumulative (3/11-20/11)	44,719,238	66,655,369	21,936,131	49.05%
Cumulative (2/1-20/11)	1,322,495,067	1,036,985,050	-285,510,017	-21.59%

NO. OF SHARES TRADED

	2023	2024	NET CHANGE	CHANGE (%)
Daily	4,798,766	6,017,339	1,218,573	25.39%
Cumulative (3/11-20/11)	40,656,938	55,768,385	15,111,447	37.17%
Cumulative (2/1-20/11)	984,121,596	773,961,414	-210,160,182	-21.36%

NO. OF TRANSACTIONS

	2023	2024	NET CHANGE	CHANGE (%)
Daily	2,556	2,565	9	0.35%
Cumulative (3/11-20/11)	28,385	31,561	3,176	11.19%
Cumulative (2/1-20/11)	614,438	488,809	-125,629	-20.45%

SOME FINANCIAL RATIOS FOR THE ASE (20/11/2024)

SECTOR	P/E	P/BV	DIVIDEND YIELD (%)	TURNOVER (%)
FINANCIAL	7.998	0.745	6.016	0.108
SERVICES	12.584	1.254	6.186	0.101
INDUSTRY	9.368	1.555	7.251	0.037
OVERALL	8.518	0.987	6.765	0.097

STOCK PRICE INDEX WEIGHTED BY FREE FLOAT MARKET CAPITALIZATION (1999=1000)

	TUESDAY 19/11/2024	WEDNESDAY 20/11/2024	% CHANGE	
			DAY BEFORE	YTD
GENERAL	2421.7	2420.8	-0.04%	-0.43%
FINANCIAL	2601.6	2600.5	-0.04%	-4.71%
SERVICES	1649.7	1641.8	-0.48%	-0.14%
INDUSTRY	5257.4	5293.0	0.68%	12.17%

STOCK PRICE INDEX WEIGHTED BY FREE FLOAT MARKET CAPITALIZATION ASE20 (2014=1000)

	1304.2	1303.6	-0.05%	-0.40%
--	--------	--------	--------	--------

Total Return Index ASETR (2021=1074)

	1592.9	1592.1	-0.05%	6.97%
--	--------	--------	--------	-------

STOCK PRICE INDEX WEIGHTED BY MARKET CAPITALIZATION (1991=1000)

	TUESDAY 19/11/2024	WEDNESDAY 20/11/2024	% CHANGE	
			DAY BEFORE	YTD
GENERAL	4487.7	4493.7	0.13%	1.75%
BANKS	6389.6	6379.0	-0.17%	-5.30%
INSURANCE	1386.3	1385.8	-0.04%	7.85%
SERVICES	853.5	852.8	-0.09%	-2.95%
INDUSTRY	6430.3	6466.3	0.56%	13.31%

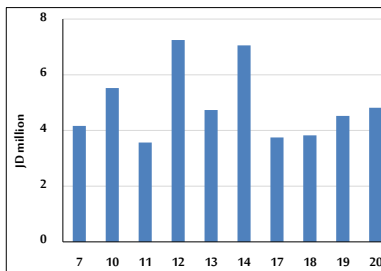
STOCK PRICE MARKET INDEX WEIGHTED BY FREE FLOAT MARKET CAP. (2012=1000)

	TUESDAY 19/11/2024	WEDNESDAY 20/11/2024	% CHANGE	
			DAY BEFORE	YTD
FIRST MARKET	1356.2	1355.7	-0.04%	-0.24%
SECOND MARKET	826.7	831.5	0.58%	-3.79%

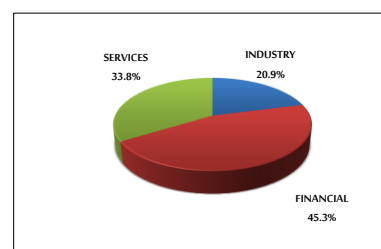
MARKET CAPITALIZATION (JD)

	17,135,938,504	17,160,849,783	0.15%	1.31%
--	----------------	----------------	-------	-------

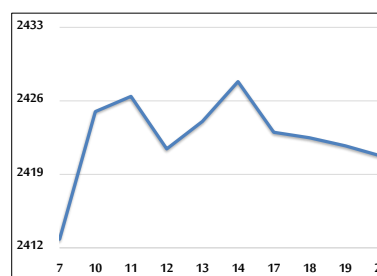
VALUE TRADED FROM 7/11 TO 20/11/2024



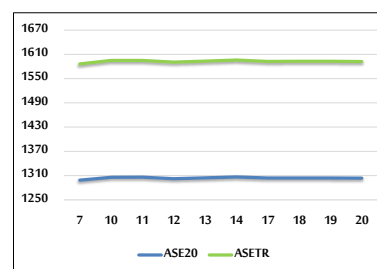
VALUE TRADED BY SECTOR WEDNESDAY 20/11/2024



GENERAL FREE FLOAT PRICE INDEX FROM 7/11 TO 20/11/2024



ASE20 and ASETR FREE FLOAT PRICE INDEX FROM 7/11 TO 20/11/2024



STOCK PRICE INDEX FROM 7/11 TO 20/11/2024

