

Daily Summary for Amman Stock Exchange

VALUE TRADED (JD)

	2023	2024	NET CHANGE	CHANGE (%)
Daily	3,889,314	3,822,395	-66,919	-1.72%
Cumulative (3/11-18/11)	39,284,719	57,319,161	18,034,442	45.91%
Cumulative (2/1-18/11)	1,317,060,548	1,027,648,842	-289,411,706	-21.97%

NO. OF SHARES TRADED

	2023	2024	NET CHANGE	CHANGE (%)
Daily	3,680,451	2,868,558	-811,893	-22.06%
Cumulative (3/11-18/11)	33,043,975	45,753,696	12,709,721	38.46%
Cumulative (2/1-18/11)	976,508,633	763,946,725	-212,561,908	-21.77%

NO. OF TRANSACTIONS

	2023	2024	NET CHANGE	CHANGE (%)
Daily	2,297	2,206	-91	-3.96%
Cumulative (3/11-18/11)	23,818	26,565	2,747	11.53%
Cumulative (2/1-18/11)	609,871	483,813	-126,058	-20.67%

SOME FINANCIAL RATIOS FOR THE ASE (18/11/2024)

SECTOR	P/E	P/BV	DIVIDEND YIELD (%)	TURNOVER (%)
FINANCIAL	8.029	0.748	5.993	0.042
SERVICES	12.645	1.260	6.156	0.052
INDUSTRY	9.207	1.528	7.378	0.060
OVERALL	8.486	0.984	6.790	0.046

STOCK PRICE INDEX WEIGHTED BY FREE FLOAT MARKET CAPITALIZATION (1999=1000)

	SUNDAY 17/11/2024	MONDAY 18/11/2024	% CHANGE	
			DAY BEFORE	YTD
GENERAL	2423.0	2422.5	-0.02%	-0.36%
FINANCIAL	2613.0	2607.2	-0.22%	-4.46%
SERVICES	1652.3	1654.9	0.16%	0.66%
INDUSTRY	5193.1	5209.3	0.31%	10.40%

STOCK PRICE INDEX WEIGHTED BY FREE FLOAT MARKET CAPITALIZATION ASE20 (2014=1000)

	1303.9	1304.2	0.02%	-0.36%
--	--------	--------	-------	--------

Total Return Index ASETR (2021=1074)

	1592.5	1592.9	0.02%	7.01%
--	--------	--------	-------	-------

STOCK PRICE INDEX WEIGHTED BY MARKET CAPITALIZATION (1991=1000)

	SUNDAY 17/11/2024	MONDAY 18/11/2024	% CHANGE	
			DAY BEFORE	YTD
GENERAL	4478.0	4476.8	-0.03%	1.37%
BANKS	6424.8	6405.1	-0.31%	-4.91%
INSURANCE	1389.0	1388.5	-0.04%	8.06%
SERVICES	857.1	856.1	-0.12%	-2.57%
INDUSTRY	6345.2	6366.5	0.34%	11.56%

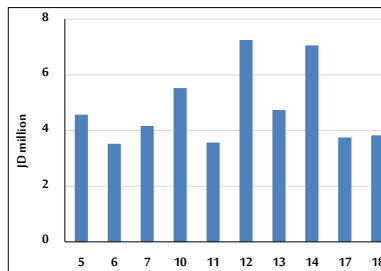
STOCK PRICE MARKET INDEX WEIGHTED BY FREE FLOAT MARKET CAP. (2012=1000)

	SUNDAY 17/11/2024	MONDAY 18/11/2024	% CHANGE	
			DAY BEFORE	YTD
FIRST MARKET	1355.9	1356.6	0.06%	-0.17%
SECOND MARKET	835.2	826.7	-1.01%	-4.34%

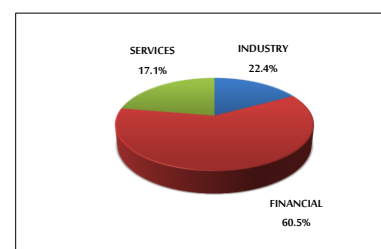
MARKET CAPITALIZATION (JD)

	17,101,369,403	17,096,989,388	-0.03%	0.93%
--	----------------	----------------	--------	-------

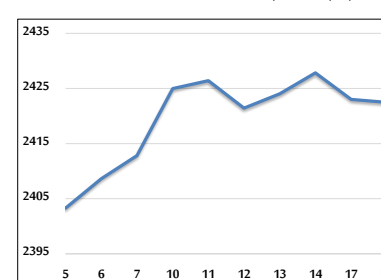
VALUE TRADED FROM 5/11 TO 18/11/2024



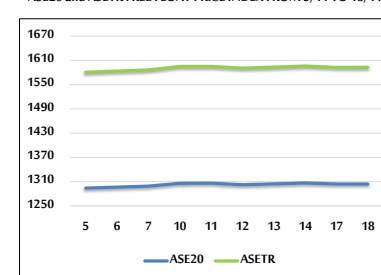
VALUE TRADED BY SECTOR MONDAY 18/11/2024



GENERAL FREE FLOAT PRICE INDEX FROM 5/11 TO 18/11/2024



ASE20 and ASETR FREE FLOAT PRICE INDEX FROM 5/11 TO 18/11/2024



STOCK PRICE INDEX FROM 5/11 TO 18/11/2024

