

## Daily Summary for Amman Stock Exchange

### VALUE TRADED (JD)

	2023	2024	NET CHANGE	CHANGE (%)
Daily	2,429,707	3,746,294	1,316,587	54.19%
Cumulative (3/11-17/11)	35,395,405	53,496,766	18,101,361	51.14%
Cumulative (2/1-17/11)	1,313,171,234	1,023,826,447	-289,344,787	-22.03%

### NO. OF SHARES TRADED

	2023	2024	NET CHANGE	CHANGE (%)
Daily	3,055,037	2,811,650	-243,387	-7.97%
Cumulative (3/11-17/11)	29,363,524	42,885,138	13,521,614	46.05%
Cumulative (2/1-17/11)	972,828,182	761,078,167	-211,750,015	-21.77%

### NO. OF TRANSACTIONS

	2023	2024	NET CHANGE	CHANGE (%)
Daily	2,370	2,187	-183	-7.72%
Cumulative (3/11-17/11)	21,521	24,359	2,838	13.19%
Cumulative (2/1-17/11)	607,574	481,607	-125,967	-20.73%

### SOME FINANCIAL RATIOS FOR THE ASE (17/11/2024)

SECTOR	P/E	P/BV	DIVIDEND YIELD (%)	TURNOVER (%)
FINANCIAL	8.061	0.750	5.959	0.033
SERVICES	12.639	1.259	6.159	0.031
INDUSTRY	9.175	1.523	7.404	0.130
OVERALL	8.489	0.984	6.788	0.045

### STOCK PRICE INDEX WEIGHTED BY FREE FLOAT MARKET CAPITALIZATION (1999=1000)

	THURSDAY 14/11/2024	SUNDAY 17/11/2024	% CHANGE	
			DAY BEFORE	YTD
GENERAL	2427.8	2423.0	-0.20%	-0.34%
FINANCIAL	2618.2	2613.0	-0.20%	-4.25%
SERVICES	1660.9	1652.3	-0.51%	0.50%
INDUSTRY	5173.2	5193.1	0.38%	10.05%

### STOCK PRICE INDEX WEIGHTED BY FREE FLOAT MARKET CAPITALIZATION ASE20 (2014=1000)

	1306.6	1303.9	-0.21%	-0.38%
--	--------	--------	--------	--------

### Total Return Index ASETR (2021=1074)

	1595.9	1592.5	-0.21%	6.99%
--	--------	--------	--------	-------

### STOCK PRICE INDEX WEIGHTED BY MARKET CAPITALIZATION (1991=1000)

	THURSDAY 14/11/2024	SUNDAY 17/11/2024	% CHANGE	
			DAY BEFORE	YTD
GENERAL	4477.5	4478.0	0.01%	1.40%
BANKS	6440.4	6424.8	-0.24%	-4.62%
INSURANCE	1389.5	1389.0	-0.04%	8.10%
SERVICES	857.8	857.1	-0.08%	-2.45%
INDUSTRY	6322.9	6345.2	0.35%	11.19%

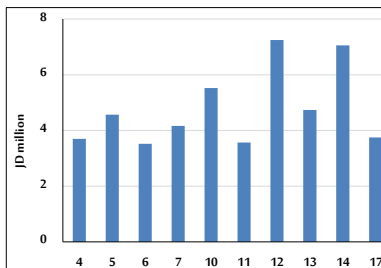
### STOCK PRICE MARKET INDEX WEIGHTED BY FREE FLOAT MARKET CAP. (2012=1000)

	THURSDAY 14/11/2024	SUNDAY 17/11/2024	% CHANGE	
			DAY BEFORE	YTD
FIRST MARKET	1358.6	1355.9	-0.20%	-0.23%
SECOND MARKET	833.7	835.2	0.18%	-3.37%

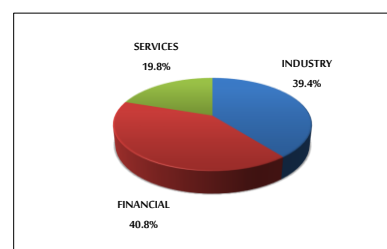
### MARKET CAPITALIZATION (JD)

	17,097,428,975	17,101,369,403	0.02%	0.96%
--	----------------	----------------	-------	-------

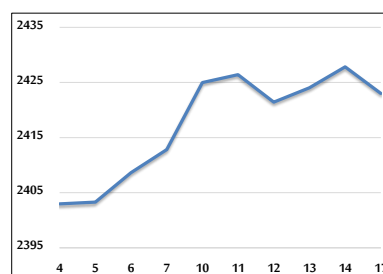
### VALUE TRADED FROM 4/11 TO 17/11/2024



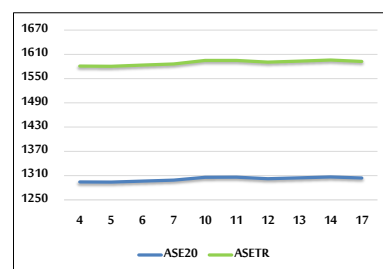
### VALUE TRADED BY SECTOR SUNDAY 17/11/2024



### GENERAL FREE FLOAT PRICE INDEX FROM 4/11 TO 17/11/2024



### ASE20 and ASETR FREE FLOAT PRICE INDEX FROM 4/11 TO 17/11/2024



### STOCK PRICE INDEX FROM 4/11 TO 17/11/2024

