

Daily Summary for Amman Stock Exchange

VALUE TRADED (JD)

	2023	2024	NET CHANGE	CHANGE (%)
Daily	2,586,928	4,568,372	1,981,444	76.59%
Cumulative (3/11-5/11)	15,024,411	13,947,639	-1,076,772	-7.17%
Cumulative (2/1-5/11)	1,292,800,240	984,277,320	-308,522,920	-23.86%

NO. OF SHARES TRADED

	2023	2024	NET CHANGE	CHANGE (%)
Daily	2,442,532	3,493,336	1,050,804	43.02%
Cumulative (3/11-5/11)	11,063,043	11,865,728	802,685	7.26%
Cumulative (2/1-5/11)	954,527,701	730,058,757	-224,468,944	-23.52%

NO. OF TRANSACTIONS

	2023	2024	NET CHANGE	CHANGE (%)
Daily	1,854	2,127	273	14.72%
Cumulative (3/11-5/11)	6,745	6,100	-645	-9.56%
Cumulative (2/1-5/11)	592,798	463,348	-129,450	-21.84%

SOME FINANCIAL RATIOS FOR THE ASE (5/11/2024)

SECTOR	P/E	P/BV	DIVIDEND YIELD (%)	TURNOVER (%)
FINANCIAL	7.982	0.741	6.034	0.047
SERVICES	12.623	1.258	6.167	0.054
INDUSTRY	8.907	1.471	7.666	0.109
OVERALL	8.321	0.965	6.925	0.056

STOCK PRICE INDEX WEIGHTED BY FREE FLOAT MARKET CAPITALIZATION (1999=1000)

	MONDAY 04/11/2024	TUESDAY 05/11/2024	% CHANGE	
			DAY BEFORE	YTD
GENERAL	2403.0	2403.3	0.01%	-1.15%
FINANCIAL	2606.7	2606.0	-0.02%	-4.50%
SERVICES	1656.5	1653.2	-0.20%	0.56%
INDUSTRY	4994.7	5013.7	0.38%	6.25%

STOCK PRICE INDEX WEIGHTED BY FREE FLOAT MARKET CAPITALIZATION ASE20 (2014=1000)

	1294.4	1293.9	-0.03%	-1.14%
--	--------	--------	--------	--------

Total Return Index ASETR (2021=1074)

	1580.9	1580.4	-0.03%	6.18%
--	--------	--------	--------	-------

STOCK PRICE INDEX WEIGHTED BY MARKET CAPITALIZATION (1991=1000)

	MONDAY 04/11/2024	TUESDAY 05/11/2024	% CHANGE	
			DAY BEFORE	YTD
GENERAL	4388.8	4399.7	0.25%	-0.38%
BANKS	6356.2	6377.5	0.33%	-5.32%
INSURANCE	1378.4	1374.0	-0.32%	6.93%
SERVICES	853.6	850.2	-0.39%	-3.24%
INDUSTRY	6114.9	6137.2	0.36%	7.54%

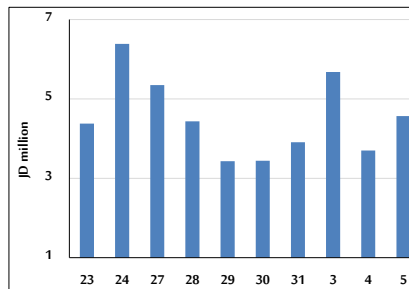
STOCK PRICE MARKET INDEX WEIGHTED BY FREE FLOAT MARKET CAP. (2012=1000)

	MONDAY 04/11/2024	TUESDAY 05/11/2024	% CHANGE	
			DAY BEFORE	YTD
FIRST MARKET	1346.2	1346.6	0.03%	-0.91%
SECOND MARKET	815.1	813.0	-0.25%	-5.93%

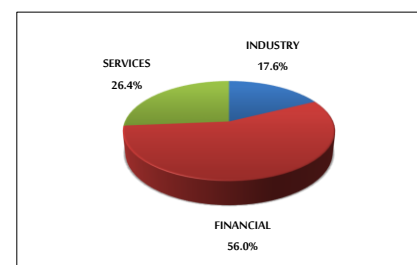
MARKET CAPITALIZATION (JD)

	16,761,784,100	16,799,119,520	0.22%	-0.83%
--	----------------	----------------	-------	--------

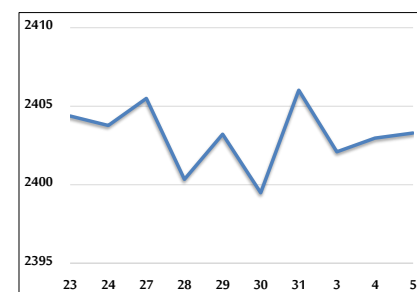
VALUE TRADED FROM 23/10 TO 5/11/2024



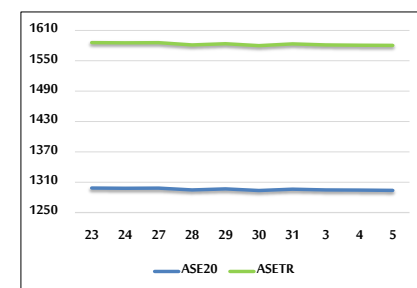
VALUE TRADED BY SECTOR TUESDAY 5/11/2024



GENERAL FREE FLOAT PRICE INDEX FROM 23/10 TO 5/11/2024



ASE20 and ASETR FREE FLOAT PRICE INDEX FROM 23/10 TO 5/11/2024



STOCK PRICE INDEX FROM 23/10 TO 5/11/2024

