

Daily Summary for Amman Stock Exchange

VALUE TRADED (JD)

	2023	2024	NET CHANGE	CHANGE (%)
Daily	7,872,327	3,699,974	-4,172,353	-53.00%
Cumulative (3/11-4/11)	12,437,483	9,379,267	-3,058,216	-24.59%
Cumulative (2/1-4/11)	1,290,213,312	979,708,948	-310,504,364	-24.07%

NO. OF SHARES TRADED

	2023	2024	NET CHANGE	CHANGE (%)
Daily	4,636,367	2,681,221	-1,955,146	-42.17%
Cumulative (3/11-4/11)	8,620,511	8,372,392	-248,119	-2.88%
Cumulative (2/1-4/11)	952,085,169	726,565,421	-225,519,748	-23.69%

NO. OF TRANSACTIONS

	2023	2024	NET CHANGE	CHANGE (%)
Daily	2,345	2,064	-281	-11.98%
Cumulative (3/11-4/11)	4,891	3,973	-918	-18.77%
Cumulative (2/1-4/11)	590,944	461,221	-129,723	-21.95%

SOME FINANCIAL RATIOS FOR THE ASE (4/11/2024)

SECTOR	P/E	P/BV	DIVIDEND YIELD (%)	TURNOVER (%)
FINANCIAL	7.960	0.739	6.051	0.035
SERVICES	12.652	1.260	6.153	0.048
INDUSTRY	8.877	1.466	7.692	0.080
OVERALL	8.301	0.962	6.942	0.043

STOCK PRICE INDEX WEIGHTED BY FREE FLOAT MARKET CAPITALIZATION (1999=1000)

	SUNDAY 03/11/2024	MONDAY 04/11/2024	% CHANGE	
			DAY BEFORE	YTD
GENERAL	2402.1	2403.0	0.04%	-1.16%
FINANCIAL	2604.4	2606.7	0.09%	-4.48%
SERVICES	1658.1	1656.5	-0.10%	0.76%
INDUSTRY	4997.2	4994.7	-0.05%	5.85%

STOCK PRICE INDEX WEIGHTED BY FREE FLOAT MARKET CAPITALIZATION ASE20 (2014=1000)

	1294.9	1294.4	-0.04%	-1.10%
--	--------	--------	--------	--------

Total Return Index ASETR (2021=1074)

	1581.5	1580.9	-0.04%	6.21%
--	--------	--------	--------	-------

STOCK PRICE INDEX WEIGHTED BY MARKET CAPITALIZATION (1991=1000)

	SUNDAY 03/11/2024	MONDAY 04/11/2024	% CHANGE	
			DAY BEFORE	YTD
GENERAL	4390.7	4388.8	-0.04%	-0.62%
BANKS	6360.8	6356.2	-0.07%	-5.63%
INSURANCE	1380.2	1378.4	-0.13%	7.28%
SERVICES	853.6	853.6	-0.01%	-2.85%
INDUSTRY	6116.3	6114.9	-0.02%	7.15%

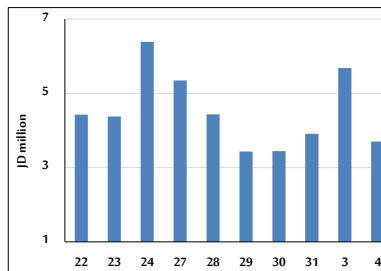
STOCK PRICE MARKET INDEX WEIGHTED BY FREE FLOAT MARKET CAP. (2012=1000)

	SUNDAY 03/11/2024	MONDAY 04/11/2024	% CHANGE	
			DAY BEFORE	YTD
FIRST MARKET	1346.3	1346.2	-0.01%	-0.94%
SECOND MARKET	810.2	815.1	0.60%	-5.69%

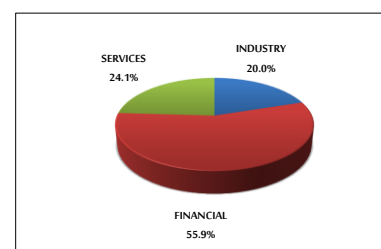
MARKET CAPITALIZATION (JD)

	16,769,652,976	16,761,784,100	-0.05%	-1.05%
--	----------------	----------------	--------	--------

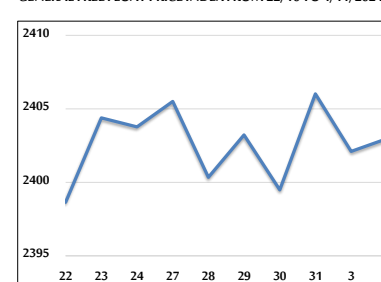
VALUE TRADED FROM 22/10 TO 4/11/2024



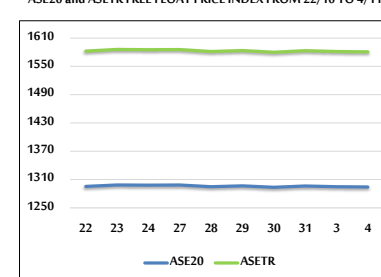
VALUE TRADED BY SECTOR MONDAY 4/11/2024



GENERAL FREE FLOAT PRICE INDEX FROM 22/10 TO 4/11/2024



ASE20 and ASETR FREE FLOAT PRICE INDEX FROM 22/10 TO 4/11/2024



STOCK PRICE INDEX FROM 22/10 TO 4/11/2024

