

Daily Summary for Amman Stock Exchange

VALUE TRADED (JD)

	2023	2024	NET CHANGE	CHANGE (%)
Daily	4,565,156	5,679,293	1,114,137	24.41%
Cumulative (3/11-3/11)	4,565,156	5,679,293	1,114,137	24.41%
Cumulative (2/1-3/11)	1,282,340,985	976,008,974	-306,332,011	-23.89%

NO. OF SHARES TRADED

	2023	2024	NET CHANGE	CHANGE (%)
Daily	3,984,144	5,691,171	1,707,027	42.85%
Cumulative (3/11-3/11)	3,984,144	5,691,171	1,707,027	42.85%
Cumulative (2/1-3/11)	947,448,802	723,884,200	-223,564,602	-23.60%

NO. OF TRANSACTIONS

	2023	2024	NET CHANGE	CHANGE (%)
Daily	2,546	1,909	-637	-25.02%
Cumulative (3/11-3/11)	2,546	1,909	-637	-25.02%
Cumulative (2/1-3/11)	588,599	459,157	-129,442	-21.99%

SOME FINANCIAL RATIOS FOR THE ASE (3/11/2024)

SECTOR	P/E	P/BV	DIVIDEND YIELD (%)	TURNOVER (%)
FINANCIAL	7.977	0.739	6.080	0.092
SERVICES	12.670	1.262	6.144	0.110
INDUSTRY	8.880	1.466	7.690	0.056
OVERALL	8.304	0.963	6.939	0.091

STOCK PRICE INDEX WEIGHTED BY FREE FLOAT MARKET CAPITALIZATION (1999=1000)

	THURSDAY 31/10/2024	SUNDAY 03/11/2024	% CHANGE	
			DAY BEFORE	YTD
GENERAL	2406.0	2402.1	-0.16%	-1.20%
FINANCIAL	2601.9	2604.4	0.10%	-4.57%
SERVICES	1668.7	1658.1	-0.63%	0.86%
INDUSTRY	5006.4	4997.2	-0.18%	5.90%

STOCK PRICE INDEX WEIGHTED BY FREE FLOAT MARKET CAPITALIZATION ASE20 (2014=1000)

	1296.4	1294.9	-0.12%	-1.07%
--	--------	--------	--------	--------

Total Return Index ASETR (2021=1074)

	1583.3	1581.5	-0.12%	6.25%
--	--------	--------	--------	-------

STOCK PRICE INDEX WEIGHTED BY MARKET CAPITALIZATION (1991=1000)

	THURSDAY 31/10/2024	SUNDAY 03/11/2024	% CHANGE	
			DAY BEFORE	YTD
GENERAL	4401.3	4390.7	-0.24%	-0.58%
BANKS	6356.9	6360.8	0.06%	-5.57%
INSURANCE	1377.0	1380.2	0.23%	7.42%
SERVICES	858.5	853.6	-0.57%	-2.85%
INDUSTRY	6148.2	6116.3	-0.52%	7.18%

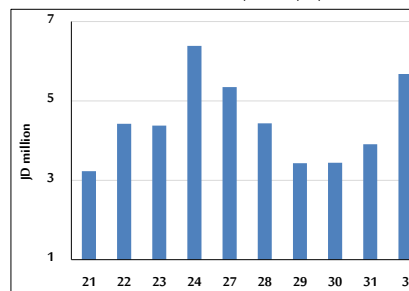
STOCK PRICE MARKET INDEX WEIGHTED BY FREE FLOAT MARKET CAP. (2012=1000)

	THURSDAY 31/10/2024	SUNDAY 03/11/2024	% CHANGE	
			DAY BEFORE	YTD
FIRST MARKET	1348.0	1346.3	-0.13%	-0.93%
SECOND MARKET	814.1	810.2	-0.48%	-6.25%

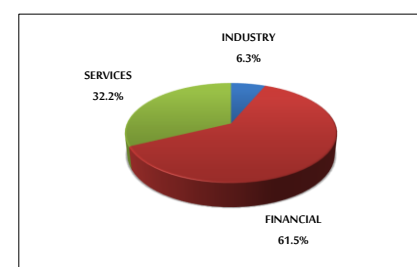
MARKET CAPITALIZATION (JD)

	16,799,650,071	16,769,652,976	-0.18%	-1.00%
--	----------------	----------------	--------	--------

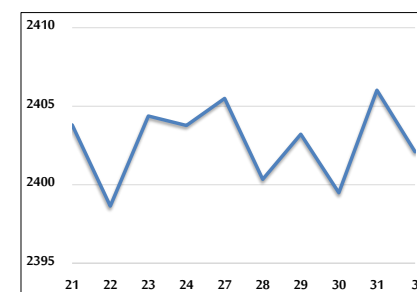
VALUE TRADED FROM 21/10 TO 3/11/2024



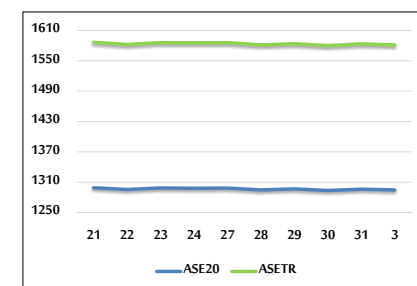
VALUE TRADED BY SECTOR SUNDAY 3/11/2024



GENERAL FREE FLOAT PRICE INDEX FROM 21/10 TO 3/11/2024



ASE20 and ASETR FREE FLOAT PRICE INDEX FROM 21/10 TO 3/11/2024



STOCK PRICE INDEX FROM 21/10 TO 3/11/2024

