

Daily Summary for Amman Stock Exchange

VALUE TRADED (JD)

	2023	2024	NET CHANGE	CHANGE (%)
Daily	4,264,929	4,216,542	-48,387	-1.13%
Cumulative (1/10-14/10)	52,835,336	38,785,470	-14,049,866	-26.59%
Cumulative (2/1-14/10)	1,227,386,011	916,531,282	-310,854,729	-25.33%

NO. OF SHARES TRADED

	2023	2024	NET CHANGE	CHANGE (%)
Daily	4,577,487	4,596,133	18,646	0.41%
Cumulative (1/10-14/10)	56,078,583	31,546,189	-24,532,394	-43.75%
Cumulative (2/1-14/10)	895,063,360	679,356,158	-215,707,202	-24.10%

NO. OF TRANSACTIONS

	2023	2024	NET CHANGE	CHANGE (%)
Daily	2,534	2,052	-482	-19.02%
Cumulative (1/10-14/10)	28,504	19,719	-8,785	-30.82%
Cumulative (2/1-14/10)	560,727	431,325	-129,402	-23.08%

SOME FINANCIAL RATIOS FOR THE ASE (14/10/2024)

SECTOR	P/E	P/BV	DIVIDEND YIELD (%)	TURNOVER (%)
FINANCIAL	8.639	0.737	6.093	0.024
SERVICES	12.291	1.273	6.090	0.246
INDUSTRY	8.674	1.434	7.864	0.048
OVERALL	8.579	0.955	6.995	0.072

STOCK PRICE INDEX WEIGHTED BY FREE FLOAT MARKET CAPITALIZATION (1999=1000)

	SUNDAY 13/10/2024	MONDAY 14/10/2024	% CHANGE	
			DAY BEFORE	YTD
GENERAL	2393.2	2391.3	-0.08%	-1.64%
FINANCIAL	2596.4	2590.0	-0.24%	-5.09%
SERVICES	1678.0	1681.5	0.21%	2.28%
INDUSTRY	4860.0	4859.3	-0.01%	2.98%

STOCK PRICE INDEX WEIGHTED BY FREE FLOAT MARKET CAPITALIZATION ASE20 (2014=1000)

	1291.6	1290.9	-0.06%	-1.37%
--	--------	--------	--------	--------

Total Return Index ASETR (2021=1074)

	1577.6	1576.6	-0.06%	5.92%
--	--------	--------	--------	-------

STOCK PRICE INDEX WEIGHTED BY MARKET CAPITALIZATION (1991=1000)

	SUNDAY 13/10/2024	MONDAY 14/10/2024	% CHANGE	
			DAY BEFORE	YTD
GENERAL	4361.2	4355.2	-0.14%	-1.39%
BANKS	6360.7	6343.3	-0.27%	-5.82%
INSURANCE	1365.2	1350.1	-1.10%	5.07%
SERVICES	855.6	855.0	-0.07%	-2.69%
INDUSTRY	6006.5	6008.2	0.03%	5.28%

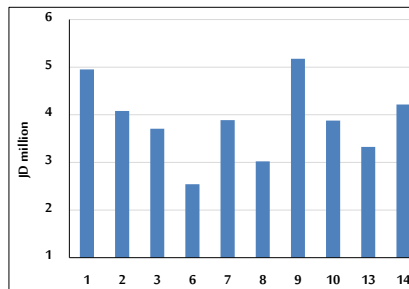
STOCK PRICE MARKET INDEX WEIGHTED BY FREE FLOAT MARKET CAP. (2012=1000)

	SUNDAY 13/10/2024	MONDAY 14/10/2024	% CHANGE	
			DAY BEFORE	YTD
FIRST MARKET	1341.9	1341.2	-0.05%	-1.31%
SECOND MARKET	807.6	802.2	-0.67%	-7.18%

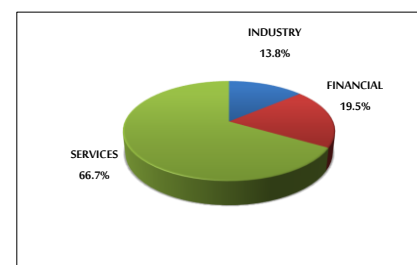
MARKET CAPITALIZATION (JD)

	16,656,058,042	16,634,958,233	-0.13%	-1.80%
--	----------------	----------------	--------	--------

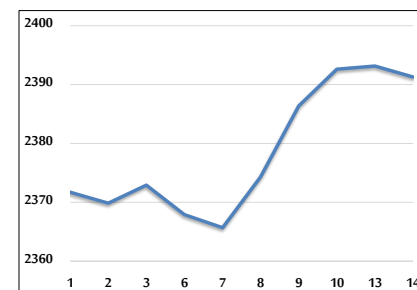
VALUE TRADED FROM 1/10 TO 14/10/2024



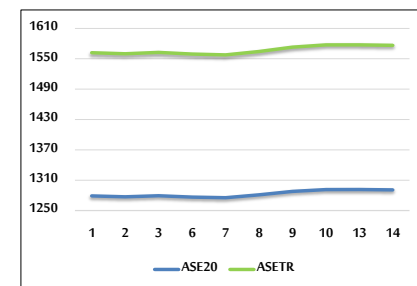
VALUE TRADED BY SECTOR MONDAY 14/10/2024



GENERAL FREE FLOAT PRICE INDEX FROM 1/10 TO 14/10/2024



ASE20 and ASETR FREE FLOAT PRICE INDEX FROM 1/10 TO 14/10/2024



STOCK PRICE INDEX FROM 1/10 TO 14/10/2024

