

### Daily Summary for Amman Stock Exchange

VALUE TRADED (JD )

	2023	2024	NET CHANGE	CHANGE (%)
Daily	5,753,226	3,876,769	-1,876,457	-32.62%
Cumulative (1/10-10/10)	43,426,135	31,242,283	-12,183,852	-28.06%
Cumulative (2/1-10/10)	1,217,976,810	908,988,095	-308,988,715	-25.37%

NO. OF SHARES TRADED

	2023	2024	NET CHANGE	CHANGE (%)
Daily	6,293,745	3,783,795	-2,509,950	-39.88%
Cumulative (1/10-10/10)	46,297,140	24,610,690	-21,686,450	-46.84%
Cumulative (2/1-10/10)	885,281,917	672,420,659	-212,861,258	-24.04%

NO. OF TRANSACTIONS

	2023	2024	NET CHANGE	CHANGE (%)
Daily	2,600	2,381	-219	-8.42%
Cumulative (1/10-10/10)	22,868	15,952	-6,916	-30.24%
Cumulative (2/1-10/10)	555,091	427,558	-127,533	-22.98%

SOME FINANCIAL RATIOS FOR THE ASE (10/10/2024)

SECTOR	P/E	P/BV	DIVIDEND YIELD (%)	TURNOVER (%)
FINANCIAL	8.680	0.741	6.064	0.034
SERVICES	12.247	1.269	6.112	0.083
INDUSTRY	8.646	1.429	7.889	0.088
OVERALL	8.586	0.956	6.990	0.051

STOCK PRICE INDEX WEIGHTED BY FREE FLOAT MARKET CAPITALIZATION (1999=1000)

	WEDNESDAY 09/10/2024	THURSDAY 10/10/2024	% CHANGE	
			DAY BEFORE	YTD
GENERAL	2386.4	2392.6	0.26%	-1.59%
FINANCIAL	2600.9	2600.1	-0.03%	-4.72%
SERVICES	1662.3	1674.0	0.70%	1.82%
INDUSTRY	4817.3	4844.6	0.57%	2.67%

STOCK PRICE INDEX WEIGHTED BY FREE FLOAT MARKET CAPITALIZATION ASE20 (2014=1000)

	1287.9	1291.5	0.28%	-1.32%
--	--------	--------	-------	--------

Total Return Index ASETR (2021=1074)

	1573.0	1577.4	0.28%	5.98%
--	--------	--------	-------	-------

STOCK PRICE INDEX WEIGHTED BY MARKET CAPITALIZATION (1991=1000)

	WEDNESDAY 09/10/2024	THURSDAY 10/10/2024	% CHANGE	
			DAY BEFORE	YTD
GENERAL	4338.1	4358.6	0.47%	-1.31%
BANKS	6360.2	6374.2	0.22%	-5.37%
INSURANCE	1363.0	1363.9	0.06%	6.15%
SERVICES	852.9	852.9	0.00%	-2.93%
INDUSTRY	5930.2	5987.2	0.96%	4.92%

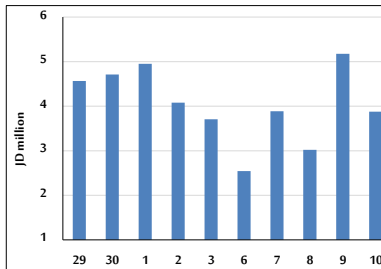
STOCK PRICE MARKET INDEX WEIGHTED BY FREE FLOAT MARKET CAP. (2012=1000)

	WEDNESDAY 09/10/2024	THURSDAY 10/10/2024	% CHANGE	
			DAY BEFORE	YTD
FIRST MARKET	1338.2	1341.8	0.27%	-1.26%
SECOND MARKET	803.6	803.5	0.00%	-7.02%

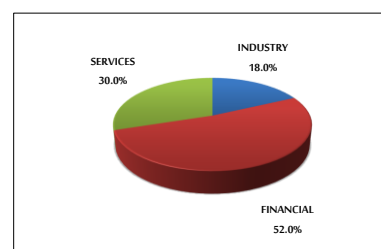
MARKET CAPITALIZATION (JD)

	16,572,716,427	16,646,093,724	0.44%	-1.73%
--	----------------	----------------	-------	--------

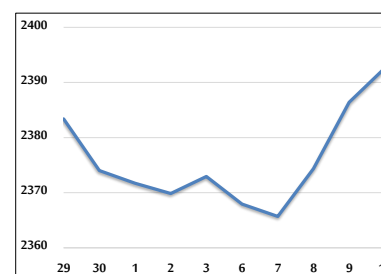
VALUE TRADED FROM 29/9 TO 10/10/2024



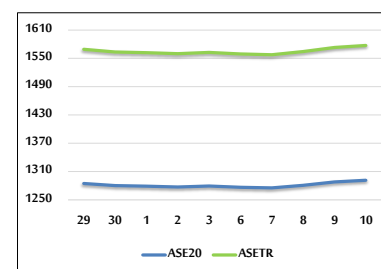
VALUE TRADED BY SECTOR THURSDAY 10/10/2024



GENERAL FREE FLOAT PRICE INDEX FROM 29/9 TO 10/10/2024



ASE20 and ASETR FREE FLOAT PRICE INDEX FROM 29/9 TO 10/10/2024



STOCK PRICE INDEX FROM 29/9 TO 10/10/2024

