

Daily Summary for Amman Stock Exchange

VALUE TRADED (JD)

	2023	2024	NET CHANGE	CHANGE (%)
Daily	5,398,498	3,021,421	-2,377,077	-44.03%
Cumulative (1/10-8/10)	31,767,541	22,189,311	-9,578,230	-30.15%
Cumulative (2/1-8/10)	1,206,318,216	899,935,123	-306,383,093	-25.40%

NO. OF SHARES TRADED

	2023	2024	NET CHANGE	CHANGE (%)
Daily	5,672,558	2,844,172	-2,828,386	-49.86%
Cumulative (1/10-8/10)	32,113,515	17,228,498	-14,885,017	-46.35%
Cumulative (2/1-8/10)	871,098,292	665,038,467	-206,059,825	-23.66%

NO. OF TRANSACTIONS

	2023	2024	NET CHANGE	CHANGE (%)
Daily	3,001	2,084	-917	-30.56%
Cumulative (1/10-8/10)	17,000	11,445	-5,555	-32.68%
Cumulative (2/1-8/10)	549,223	423,051	-126,172	-22.97%

SOME FINANCIAL RATIOS FOR THE ASE (8/10/2024)

SECTOR	P/E	P/BV	DIVIDEND YIELD (%)	TURNOVER (%)
FINANCIAL	8.654	0.738	6.082	0.041
SERVICES	12.137	1.257	6.167	0.047
INDUSTRY	8.539	1.412	7.988	0.068
OVERALL	8.523	0.949	7.042	0.045

STOCK PRICE INDEX WEIGHTED BY FREE FLOAT MARKET CAPITALIZATION (1999=1000)

	MONDAY 07/10/2024	TUESDAY 08/10/2024	% CHANGE	
			DAY BEFORE	YTD
GENERAL	2365.7	2374.4	0.37%	-2.34%
FINANCIAL	2576.5	2589.6	0.51%	-5.11%
SERVICES	1642.5	1647.7	0.32%	0.22%
INDUSTRY	4815.0	4805.8	-0.19%	1.85%

STOCK PRICE INDEX WEIGHTED BY FREE FLOAT MARKET CAPITALIZATION ASE20 (2014=1000)

	1275.4	1280.9	0.43%	-2.13%
--	--------	--------	-------	--------

Total Return Index ASETR (2021=1074)

	1557.7	1564.5	0.43%	5.11%
--	--------	--------	-------	-------

STOCK PRICE INDEX WEIGHTED BY MARKET CAPITALIZATION (1991=1000)

	MONDAY 07/10/2024	TUESDAY 08/10/2024	% CHANGE	
			DAY BEFORE	YTD
GENERAL	4318.4	4323.2	0.11%	-2.11%
BANKS	6314.9	6343.8	0.46%	-5.82%
INSURANCE	1367.5	1368.4	0.06%	6.49%
SERVICES	846.3	850.7	0.51%	-3.18%
INDUSTRY	5927.4	5900.1	-0.46%	3.39%

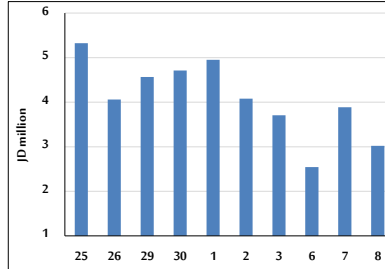
STOCK PRICE MARKET INDEX WEIGHTED BY FREE FLOAT MARKET CAP. (2012=1000)

	MONDAY 07/10/2024	TUESDAY 08/10/2024	% CHANGE	
			DAY BEFORE	YTD
FIRST MARKET	1325.5	1331.0	0.42%	-2.05%
SECOND MARKET	799.6	800.8	0.14%	-7.35%

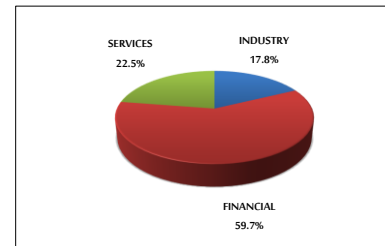
MARKET CAPITALIZATION (JD)

	16,500,553,867	16,517,014,766	0.10%	-2.49%
--	----------------	----------------	-------	--------

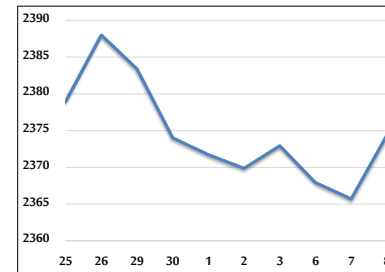
VALUE TRADED FROM 25/9 TO 8/10/2024



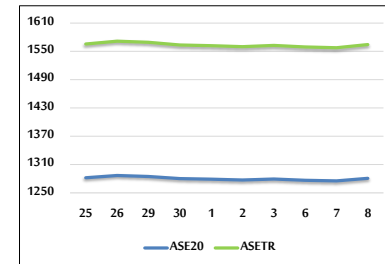
VALUE TRADED BY SECTOR TUESDAY 8/10/2024



GENERAL FREE FLOAT PRICE INDEX FROM 25/9 TO 8/10/2024



ASE20 and ASETR FREE FLOAT PRICE INDEX FROM 25/9 TO 8/10/2024



STOCK PRICE INDEX FROM 25/9 TO 8/10/2024

