

## Daily Summary for Amman Stock Exchange

### VALUE TRADED (JD)

	2023	2024	NET CHANGE	CHANGE (%)
Daily	4,290,288	3,909,687	-380,601	-8.87%
Cumulative (1/10-31/10)	103,225,154	92,583,869	-10,641,285	-10.31%
Cumulative (2/1-31/10)	1,277,775,829	970,329,681	-307,446,148	-24.06%

### NO. OF SHARES TRADED

	2023	2024	NET CHANGE	CHANGE (%)
Daily	3,151,920	3,009,779	-142,141	-4.51%
Cumulative (1/10-31/10)	104,479,881	70,383,060	-34,096,821	-32.63%
Cumulative (2/1-31/10)	943,464,658	718,193,029	-225,271,629	-23.88%

### NO. OF TRANSACTIONS

	2023	2024	NET CHANGE	CHANGE (%)
Daily	2,734	2,145	-589	-21.54%
Cumulative (1/10-31/10)	53,830	45,642	-8,188	-15.21%
Cumulative (2/1-31/10)	586,053	457,248	-128,805	-21.98%

### SOME FINANCIAL RATIOS FOR THE ASE (31/10/2024)

SECTOR	P/E	P/BV	DIVIDEND YIELD (%)	TURNOVER (%)
FINANCIAL	8.640	0.739	6.083	0.047
SERVICES	12.257	1.270	6.107	0.055
INDUSTRY	8.899	1.471	7.665	0.045
OVERALL	8.670	0.965	6.922	0.048

### STOCK PRICE INDEX WEIGHTED BY FREE FLOAT MARKET CAPITALIZATION (1999=1000)

	WEDNESDAY 30/10/2024	THURSDAY 31/10/2024	% CHANGE	
			DAY BEFORE	YTD
GENERAL	2399.5	2406.0	0.27%	-1.04%
FINANCIAL	2601.6	2601.9	0.01%	-4.66%
SERVICES	1661.7	1668.7	0.42%	1.50%
INDUSTRY	4967.7	5006.4	0.78%	6.10%

### STOCK PRICE INDEX WEIGHTED BY FREE FLOAT MARKET CAPITALIZATION ASE20 (2014=1000)

	2023	2024	NET CHANGE	CHANGE (%)
	1293.6	1296.4	2.8	0.22%

### Total Return Index ASETR (2021=1074)

	2023	2024	NET CHANGE	CHANGE (%)
	1580.0	1583.3	3.3	0.21%

### STOCK PRICE INDEX WEIGHTED BY MARKET CAPITALIZATION (1991=1000)

	WEDNESDAY 30/10/2024	THURSDAY 31/10/2024	% CHANGE	
			DAY BEFORE	YTD
GENERAL	4387.0	4401.3	0.33%	-0.34%
BANKS	6363.8	6356.9	-0.11%	-5.62%
INSURANCE	1380.2	1377.0	-0.23%	7.17%
SERVICES	855.6	858.5	0.34%	-2.29%
INDUSTRY	6094.6	6148.2	0.88%	7.74%

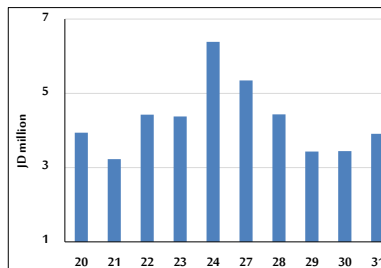
### STOCK PRICE MARKET INDEX WEIGHTED BY FREE FLOAT MARKET CAP. (2012=1000)

	WEDNESDAY 30/10/2024	THURSDAY 31/10/2024	% CHANGE	
			DAY BEFORE	YTD
FIRST MARKET	1344.8	1348.0	0.24%	-0.80%
SECOND MARKET	810.1	814.1	0.50%	-5.80%

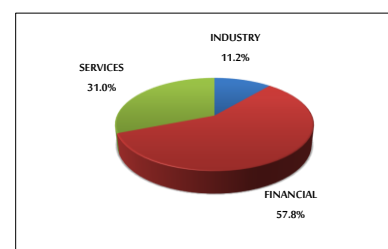
### MARKET CAPITALIZATION (JD)

	2023	2024	NET CHANGE	CHANGE (%)
	16,749,732,418	16,799,650,071	49,917,653	0.30%

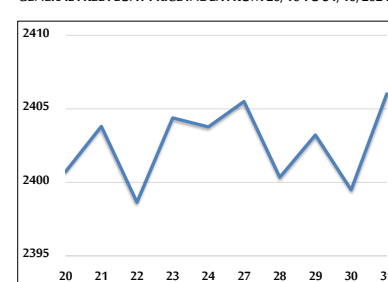
### VALUE TRADED FROM 20/10 TO 31/10/2024



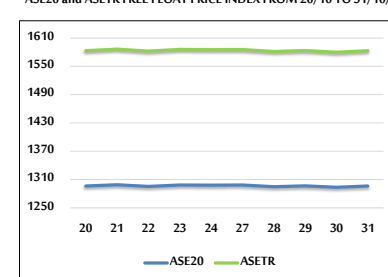
### VALUE TRADED BY SECTOR THURSDAY 31/10/2024



### GENERAL FREE FLOAT PRICE INDEX FROM 20/10 TO 31/10/2024



### ASE20 and ASETR FREE FLOAT PRICE INDEX FROM 20/10 TO 31/10/2024



### STOCK PRICE INDEX FROM 20/10 TO 31/10/2024

