

## Daily Summary for Amman Stock Exchange

### VALUE TRADED (JD)

	2023	2024	NET CHANGE	CHANGE (%)
Daily	5,018,872	3,430,640	-1,588,232	-31.65%
Cumulative (1/10-29/10)	93,109,367	85,231,222	-7,878,145	-8.46%
Cumulative (2/1-29/10)	1,267,660,042	962,977,034	-304,683,008	-24.04%

### NO. OF SHARES TRADED

	2023	2024	NET CHANGE	CHANGE (%)
Daily	5,310,330	2,665,846	-2,644,484	-49.80%
Cumulative (1/10-29/10)	94,366,528	64,656,482	-29,710,046	-31.48%
Cumulative (2/1-29/10)	933,351,305	712,466,451	-220,884,854	-23.67%

### NO. OF TRANSACTIONS

	2023	2024	NET CHANGE	CHANGE (%)
Daily	1,929	2,189	260	13.48%
Cumulative (1/10-29/10)	48,963	41,577	-7,386	-15.08%
Cumulative (2/1-29/10)	581,186	453,183	-128,003	-22.02%

### SOME FINANCIAL RATIOS FOR THE ASE (29/10/2024)

SECTOR	P/E	P/BV	DIVIDEND YIELD (%)	TURNOVER (%)
FINANCIAL	8.636	0.738	6.086	0.022
SERVICES	12.241	1.268	6.115	0.112
INDUSTRY	8.944	1.479	7.626	0.043
OVERALL	8.683	0.966	6.912	0.043

### STOCK PRICE INDEX WEIGHTED BY FREE FLOAT MARKET CAPITALIZATION (1999=1000)

	MONDAY 28/10/2024	TUESDAY 29/10/2024	% CHANGE	
			DAY BEFORE	YTD
GENERAL	2400.3	2403.2	0.12%	-1.15%
FINANCIAL	2594.1	2598.7	0.18%	-4.77%
SERVICES	1662.4	1664.8	0.14%	1.26%
INDUSTRY	5015.7	5012.0	-0.07%	6.22%

### STOCK PRICE INDEX WEIGHTED BY FREE FLOAT MARKET CAPITALIZATION ASE20 (2014=1000)

	1294.8	1296.7	0.14%	-0.93%
--	--------	--------	-------	--------

### Total Return Index ASETR (2021=1074)

	1581.5	1583.7	0.14%	6.40%
--	--------	--------	-------	-------

### STOCK PRICE INDEX WEIGHTED BY MARKET CAPITALIZATION (1991=1000)

	MONDAY 28/10/2024	TUESDAY 29/10/2024	% CHANGE	
			DAY BEFORE	YTD
GENERAL	4405.2	4407.7	0.06%	-0.20%
BANKS	6350.6	6356.0	0.08%	-5.64%
INSURANCE	1379.0	1377.9	-0.08%	7.24%
SERVICES	857.6	856.2	-0.16%	-2.55%
INDUSTRY	6170.2	6176.9	0.11%	8.24%

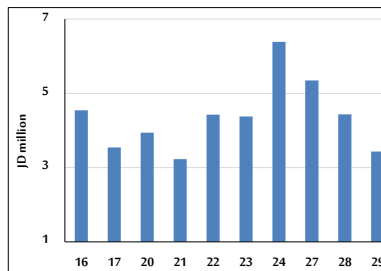
### STOCK PRICE MARKET INDEX WEIGHTED BY FREE FLOAT MARKET CAP. (2012=1000)

	MONDAY 28/10/2024	TUESDAY 29/10/2024	% CHANGE	
			DAY BEFORE	YTD
FIRST MARKET	1345.8	1347.6	0.13%	-0.84%
SECOND MARKET	806.0	806.4	0.04%	-6.70%

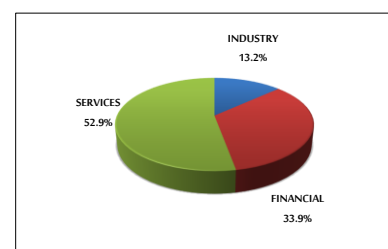
### MARKET CAPITALIZATION (JD)

	16,812,622,750	16,822,415,745	0.06%	-0.69%
--	----------------	----------------	-------	--------

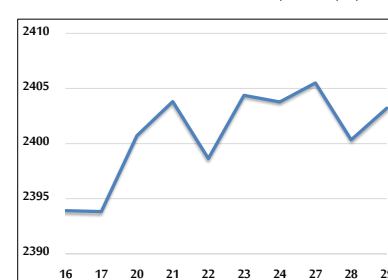
### VALUE TRADED FROM 16/10 TO 29/10/2024



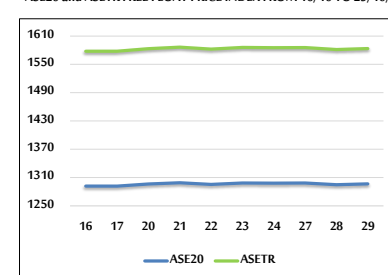
### VALUE TRADED BY SECTOR TUESDAY 29/10/2024



### GENERAL FREE FLOAT PRICE INDEX FROM 16/10 TO 29/10/2024



### ASE20 and ASETR FREE FLOAT PRICE INDEX FROM 16/10 TO 29/10/2024



### STOCK PRICE INDEX FROM 16/10 TO 29/10/2024

