

Daily Summary for Amman Stock Exchange

VALUE TRADED (JD)

	2023	2024	NET CHANGE	CHANGE (%)
Daily	4,376,835	2,542,921	-1,833,914	-41.90%
Cumulative (1/10-6/10)	19,612,212	15,281,119	-4,331,093	-22.08%
Cumulative (2/1-6/10)	1,194,162,887	893,026,931	-301,135,956	-25.22%

NO. OF SHARES TRADED

	2023	2024	NET CHANGE	CHANGE (%)
Daily	4,176,031	1,981,891	-2,194,140	-52.54%
Cumulative (1/10-6/10)	20,378,012	11,148,746	-9,229,266	-45.29%
Cumulative (2/1-6/10)	859,362,789	658,958,715	-200,404,074	-23.32%

NO. OF TRANSACTIONS

	2023	2024	NET CHANGE	CHANGE (%)
Daily	2,668	1,441	-1,227	-45.99%
Cumulative (1/10-6/10)	10,683	7,295	-3,388	-31.71%
Cumulative (2/1-6/10)	542,906	418,901	-124,005	-22.84%

SOME FINANCIAL RATIOS FOR THE ASE (6/10/2024)

SECTOR	P/E	P/BV	DIVIDEND YIELD (%)	TURNOVER (%)
FINANCIAL	8.617	0.735	6.108	0.033
SERVICES	12.142	1.258	6.165	0.040
INDUSTRY	8.549	1.413	7.979	0.010
OVERALL	8.507	0.947	7.055	0.032

STOCK PRICE INDEX WEIGHTED BY FREE FLOAT MARKET CAPITALIZATION (1999=1000)

	THURSDAY 03/10/2024	SUNDAY 06/10/2024	% CHANGE	
			DAY BEFORE	YTD
GENERAL	2372.9	2367.9	-0.21%	-2.60%
FINANCIAL	2582.2	2577.9	-0.17%	-5.54%
SERVICES	1649.0	1647.4	-0.09%	0.21%
INDUSTRY	4829.2	4805.2	-0.50%	1.83%

STOCK PRICE INDEX WEIGHTED BY FREE FLOAT MARKET CAPITALIZATION ASE20 (2014=1000)

	1279.4	1276.7	-0.21%	-2.45%
--	--------	--------	--------	--------

Total Return Index ASETR (2021=1074)

	1562.6	1559.3	-0.21%	4.76%
--	--------	--------	--------	-------

STOCK PRICE INDEX WEIGHTED BY MARKET CAPITALIZATION (1991=1000)

	THURSDAY 03/10/2024	SUNDAY 06/10/2024	% CHANGE	
			DAY BEFORE	YTD
GENERAL	4327.3	4315.3	-0.28%	-2.29%
BANKS	6316.1	6312.9	-0.05%	-6.28%
INSURANCE	1367.0	1367.6	0.05%	6.43%
SERVICES	851.9	851.2	-0.08%	-3.12%
INDUSTRY	5945.0	5907.2	-0.64%	3.51%

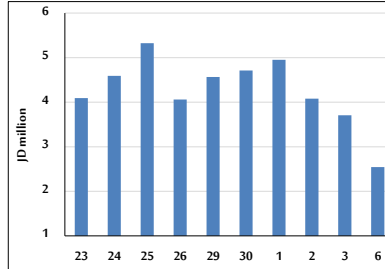
STOCK PRICE MARKET INDEX WEIGHTED BY FREE FLOAT MARKET CAP. (2012=1000)

	THURSDAY 03/10/2024	SUNDAY 06/10/2024	% CHANGE	
			DAY BEFORE	YTD
FIRST MARKET	1329.4	1327.1	-0.17%	-2.34%
SECOND MARKET	803.3	796.8	-0.81%	-7.80%

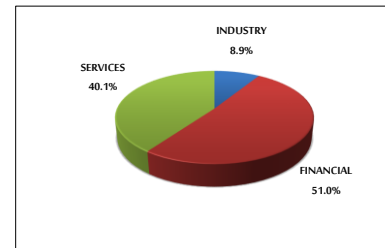
MARKET CAPITALIZATION (JD)

	16,531,392,982	16,488,582,254	-0.26%	-2.66%
--	----------------	----------------	--------	--------

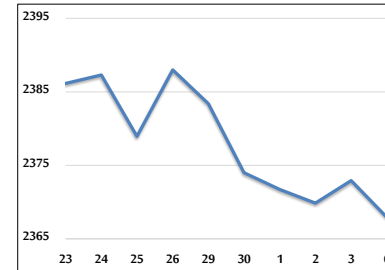
VALUE TRADED FROM 23/9 TO 6/10/2024



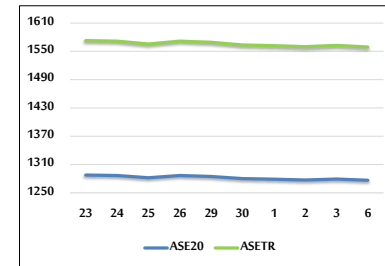
VALUE TRADED BY SECTOR SUNDAY 6/10/2024



GENERAL FREE FLOAT PRICE INDEX FROM 23/9 TO 6/10/2024



ASE20 and ASETR FREE FLOAT PRICE INDEX FROM 23/9 TO 6/10/2024



STOCK PRICE INDEX FROM 23/9 TO 6/10/2024

