

Daily Summary for Amman Stock Exchange

VALUE TRADED (JD)

	2023	2024	NET CHANGE	CHANGE (%)
Daily	3,671,923	5,346,940	1,675,017	45.62%
Cumulative (1/10-27/10)	84,814,100	77,366,927	-7,447,173	-8.78%
Cumulative (2/1-27/10)	1,259,364,775	955,112,739	-304,252,036	-24.16%

NO. OF SHARES TRADED

	2023	2024	NET CHANGE	CHANGE (%)
Daily	3,544,520	3,595,421	50,901	1.44%
Cumulative (1/10-27/10)	85,669,901	58,884,875	-26,785,026	-31.27%
Cumulative (2/1-27/10)	924,654,678	706,694,844	-217,959,834	-23.57%

NO. OF TRANSACTIONS

	2023	2024	NET CHANGE	CHANGE (%)
Daily	1,664	2,340	676	40.63%
Cumulative (1/10-27/10)	45,135	37,353	-7,782	-17.24%
Cumulative (2/1-27/10)	577,358	448,959	-128,399	-22.24%

SOME FINANCIAL RATIOS FOR THE ASE (27/10/2024)

SECTOR	P/E	P/BV	DIVIDEND YIELD (%)	TURNOVER (%)
FINANCIAL	8.642	0.739	6.082	0.031
SERVICES	12.254	1.270	6.109	0.134
INDUSTRY	8.918	1.474	7.648	0.075
OVERALL	8.678	0.966	6.916	0.058

STOCK PRICE INDEX WEIGHTED BY FREE FLOAT MARKET CAPITALIZATION (1999=1000)

	THURSDAY 24/10/2024	SUNDAY 27/10/2024	% CHANGE	
			DAY BEFORE	YTD
GENERAL	2403.8	2405.5	0.07%	-1.06%
FINANCIAL	2599.2	2600.3	0.05%	-4.71%
SERVICES	1664.7	1667.8	0.18%	1.45%
INDUSTRY	5016.9	5015.2	-0.03%	6.28%

STOCK PRICE INDEX WEIGHTED BY FREE FLOAT MARKET CAPITALIZATION ASE20 (2014=1000)

	1298.1	1298.4	0.02%	-0.80%
--	--------	--------	-------	--------

Total Return Index ASETR (2021=1074)

	1585.5	1585.8	0.02%	6.54%
--	--------	--------	-------	-------

STOCK PRICE INDEX WEIGHTED BY MARKET CAPITALIZATION (1991=1000)

	THURSDAY 24/10/2024	SUNDAY 27/10/2024	% CHANGE	
			DAY BEFORE	YTD
GENERAL	4412.1	4405.2	-0.16%	-0.25%
BANKS	6361.3	6365.0	0.06%	-5.50%
INSURANCE	1363.6	1362.8	-0.06%	6.06%
SERVICES	856.5	855.2	-0.15%	-2.67%
INDUSTRY	6188.0	6162.1	-0.42%	7.98%

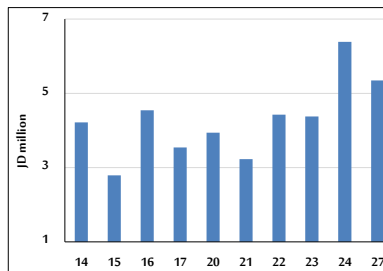
STOCK PRICE MARKET INDEX WEIGHTED BY FREE FLOAT MARKET CAP. (2012=1000)

	THURSDAY 24/10/2024	SUNDAY 27/10/2024	% CHANGE	
			DAY BEFORE	YTD
FIRST MARKET	1348.2	1349.0	0.06%	-0.73%
SECOND MARKET	802.6	805.8	0.40%	-6.76%

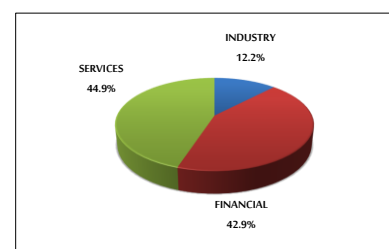
MARKET CAPITALIZATION (JD)

	16,838,863,874	16,813,962,799	-0.15%	-0.74%
--	----------------	----------------	--------	--------

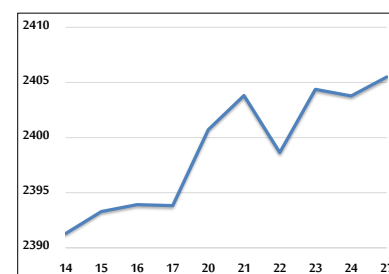
VALUE TRADED FROM 14/10 TO 27/10/2024



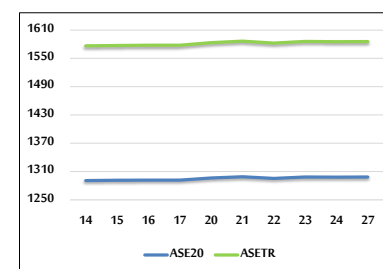
VALUE TRADED BY SECTOR SUNDAY 27/10/2024



GENERAL FREE FLOAT PRICE INDEX FROM 14/10 TO 27/10/2024



ASE20 and ASETR FREE FLOAT PRICE INDEX FROM 14/10 TO 27/10/2024



STOCK PRICE INDEX FROM 14/10 TO 27/10/2024

