

Daily Summary for Amman Stock Exchange

VALUE TRADED (JD)

	2023	2024	NET CHANGE	CHANGE (%)
Daily	4,280,800	3,541,125	-739,675	-17.28%
Cumulative (1/10-17/10)	64,190,949	49,662,092	-14,528,857	-22.63%
Cumulative (2/1-17/10)	1,238,741,624	927,407,904	-311,333,720	-25.13%

NO. OF SHARES TRADED

	2023	2024	NET CHANGE	CHANGE (%)
Daily	4,445,271	2,746,171	-1,699,100	-38.22%
Cumulative (1/10-17/10)	68,357,179	39,774,520	-28,582,659	-41.81%
Cumulative (2/1-17/10)	907,341,956	687,584,489	-219,757,467	-24.22%

NO. OF TRANSACTIONS

	2023	2024	NET CHANGE	CHANGE (%)
Daily	2,230	2,028	-202	-9.06%
Cumulative (1/10-17/10)	34,662	25,160	-9,502	-27.41%
Cumulative (2/1-17/10)	566,885	436,766	-130,119	-22.95%

SOME FINANCIAL RATIOS FOR THE ASE (17/10/2024)

SECTOR	P/E	P/BV	DIVIDEND YIELD (%)	TURNOVER (%)
FINANCIAL	8.634	0.738	6.088	0.034
SERVICES	12.288	1.273	6.092	0.090
INDUSTRY	8.698	1.438	7.842	0.024
OVERALL	8.597	0.957	6.981	0.044

STOCK PRICE INDEX WEIGHTED BY FREE FLOAT MARKET CAPITALIZATION (1999=1000)

	WEDNESDAY 16/10/2024	THURSDAY 17/10/2024	% CHANGE	
			DAY BEFORE	YTD
GENERAL	2393.9	2393.8	0.00%	-1.54%
FINANCIAL	2594.0	2597.4	0.13%	-4.82%
SERVICES	1674.1	1672.0	-0.12%	1.70%
INDUSTRY	4895.9	4880.7	-0.31%	3.43%

STOCK PRICE INDEX WEIGHTED BY FREE FLOAT MARKET CAPITALIZATION ASE20 (2014=1000)

	1291.9	1291.9	0.00%	-1.29%
--	--------	--------	-------	--------

Total Return Index ASETR (2021=1074)

	1577.9	1577.9	0.00%	6.01%
--	--------	--------	-------	-------

STOCK PRICE INDEX WEIGHTED BY MARKET CAPITALIZATION (1991=1000)

	WEDNESDAY 16/10/2024	THURSDAY 17/10/2024	% CHANGE	
			DAY BEFORE	YTD
GENERAL	4370.1	4364.0	-0.14%	-1.18%
BANKS	6349.7	6354.6	0.08%	-5.66%
INSURANCE	1360.0	1358.9	-0.08%	5.76%
SERVICES	856.5	859.2	0.32%	-2.21%
INDUSTRY	6049.1	6015.6	-0.55%	5.41%

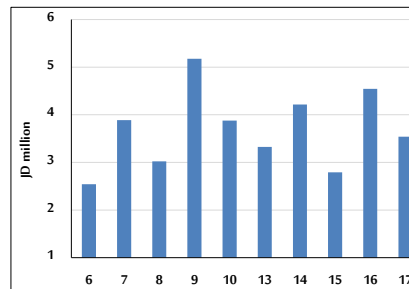
STOCK PRICE MARKET INDEX WEIGHTED BY FREE FLOAT MARKET CAP. (2012=1000)

	WEDNESDAY 16/10/2024	THURSDAY 17/10/2024	% CHANGE	
			DAY BEFORE	YTD
FIRST MARKET	1342.4	1341.9	-0.03%	-1.25%
SECOND MARKET	803.5	807.1	0.45%	-6.62%

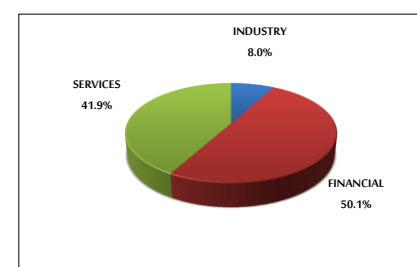
MARKET CAPITALIZATION (JD)

	16,688,708,759	16,667,066,667	-0.13%	-1.61%
--	----------------	----------------	--------	--------

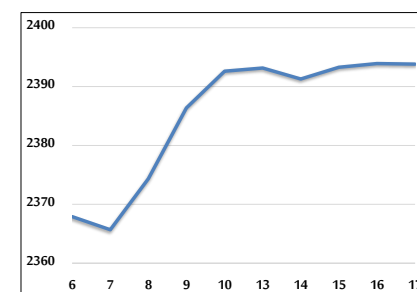
VALUE TRADED FROM 6/10 TO 17/10/2024



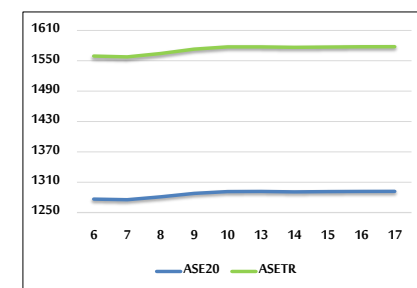
VALUE TRADED BY SECTOR THURSDAY 17/10/2024



GENERAL FREE FLOAT PRICE INDEX FROM 6/10 TO 17/10/2024



ASE20 and ASETR FREE FLOAT PRICE INDEX FROM 6/10 TO 17/10/2024



STOCK PRICE INDEX FROM 6/10 TO 17/10/2024

