

## Daily Summary for Amman Stock Exchange

### VALUE TRADED (JD)

	2023	2024	NET CHANGE	CHANGE (%)
Daily	5,156,588	3,706,277	-1,450,311	-28.13%
Cumulative (1/10-3/10)	15,235,377	12,738,198	-2,497,179	-16.39%
Cumulative (2/1-3/10)	1,189,786,052	890,484,010	-299,302,042	-25.16%

### NO. OF SHARES TRADED

	2023	2024	NET CHANGE	CHANGE (%)
Daily	4,911,990	2,623,308	-2,288,682	-46.59%
Cumulative (1/10-3/10)	16,201,981	9,166,855	-7,035,126	-43.42%
Cumulative (2/1-3/10)	855,186,758	656,976,824	-198,209,934	-23.18%

### NO. OF TRANSACTIONS

	2023	2024	NET CHANGE	CHANGE (%)
Daily	2,886	1,753	-1,133	-39.26%
Cumulative (1/10-3/10)	8,015	5,854	-2,161	-26.96%
Cumulative (2/1-3/10)	540,238	417,460	-122,778	-22.73%

### SOME FINANCIAL RATIOS FOR THE ASE (3/10/2024)

SECTOR	P/E	P/BV	DIVIDEND YIELD (%)	TURNOVER (%)
FINANCIAL	8.622	0.736	6.105	0.045
SERVICES	12.148	1.259	6.162	0.042
INDUSTRY	8.605	1.423	7.927	0.025
OVERALL	8.531	0.949	7.035	0.042

### STOCK PRICE INDEX WEIGHTED BY FREE FLOAT MARKET CAPITALIZATION (1999=1000)

	WEDNESDAY 02/10/2024	THURSDAY 03/10/2024	% CHANGE	
			DAY BEFORE	YTD
GENERAL	2369.9	2372.9	0.13%	-2.40%
FINANCIAL	2583.9	2582.2	-0.07%	-5.38%
SERVICES	1639.7	1649.0	0.57%	0.30%
INDUSTRY	4820.3	4829.2	0.18%	2.34%

### STOCK PRICE INDEX WEIGHTED BY FREE FLOAT MARKET CAPITALIZATION ASE20 (2014=1000)

	1277.3	1279.4	0.16%	-2.25%
--	--------	--------	-------	--------

### Total Return Index ASETR (2021=1074)

	1560.1	1562.6	0.16%	4.98%
--	--------	--------	-------	-------

### STOCK PRICE INDEX WEIGHTED BY MARKET CAPITALIZATION (1991=1000)

	WEDNESDAY 02/10/2024	THURSDAY 03/10/2024	% CHANGE	
			DAY BEFORE	YTD
GENERAL	4321.0	4327.3	0.15%	-2.02%
BANKS	6317.6	6316.1	-0.02%	-6.23%
INSURANCE	1363.8	1367.0	0.23%	6.38%
SERVICES	848.8	851.9	0.36%	-3.05%
INDUSTRY	5927.5	5945.0	0.29%	4.18%

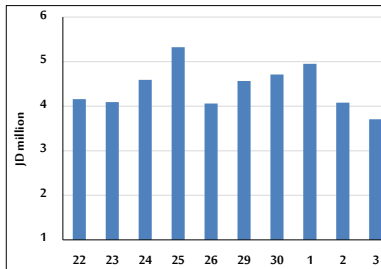
### STOCK PRICE MARKET INDEX WEIGHTED BY FREE FLOAT MARKET CAP. (2012=1000)

	WEDNESDAY 02/10/2024	THURSDAY 03/10/2024	% CHANGE	
			DAY BEFORE	YTD
FIRST MARKET	1327.6	1329.4	0.14%	-2.17%
SECOND MARKET	804.1	803.3	-0.10%	-7.05%

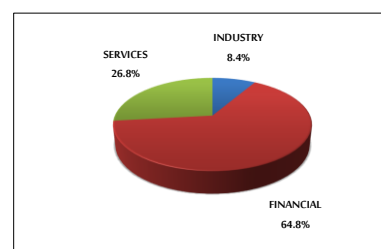
### MARKET CAPITALIZATION (JD)

	16,508,137,633	16,531,392,982	0.14%	-2.41%
--	----------------	----------------	-------	--------

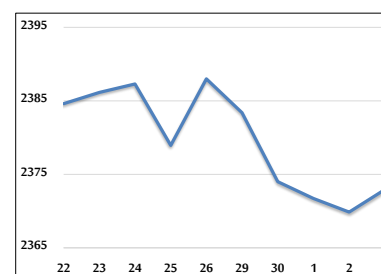
### VALUE TRADED FROM 22/9 TO 3/10/2024



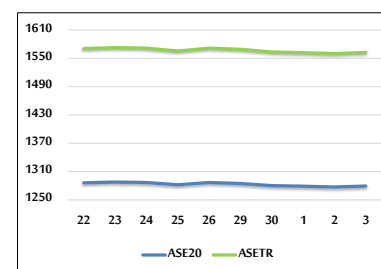
### VALUE TRADED BY SECTOR THURSDAY 3/10/2024



### GENERAL FREE FLOAT PRICE INDEX FROM 22/9 TO 3/10/2024



### ASE20 and ASETR FREE FLOAT PRICE INDEX FROM 22/9 TO 3/10/2024



### STOCK PRICE INDEX FROM 22/9 TO 3/10/2024

