

### Daily Summary for Amman Stock Exchange

VALUE TRADED (JD)

	2023	2024	NET CHANGE	CHANGE (%)
Daily	4,082,638	4,079,568	-3,070	-0.08%
Cumulative (1/10-2/10)	10,078,789	9,031,921	-1,046,868	-10.39%
Cumulative (2/1-2/10)	1,184,629,464	886,777,733	-297,851,731	-25.14%

NO. OF SHARES TRADED

	2023	2024	NET CHANGE	CHANGE (%)
Daily	3,913,078	3,282,589	-630,489	-16.11%
Cumulative (1/10-2/10)	11,289,991	6,543,547	-4,746,444	-42.04%
Cumulative (2/1-2/10)	850,274,768	654,353,516	-195,921,252	-23.04%

NO. OF TRANSACTIONS

	2023	2024	NET CHANGE	CHANGE (%)
Daily	2,364	2,232	-132	-5.58%
Cumulative (1/10-2/10)	5,129	4,101	-1,028	-20.04%
Cumulative (2/1-2/10)	537,352	415,707	-121,645	-22.64%

SOME FINANCIAL RATIOS FOR THE ASE (2/10/2024)

SECTOR	P/E	P/BV	DIVIDEND YIELD (%)	TURNOVER (%)
FINANCIAL	8.618	0.736	6.105	0.048
SERVICES	12.091	1.253	6.191	0.075
INDUSTRY	8.586	1.420	7.944	0.038
OVERALL	8.516	0.948	7.046	0.052

STOCK PRICE INDEX WEIGHTED BY FREE FLOAT MARKET CAPITALIZATION (1999=1000)

	TUESDAY 01/10/2024	WEDNESDAY 02/10/2024	% CHANGE	
			DAY BEFORE	YTD
GENERAL	2371.7	2369.9	-0.08%	-2.52%
FINANCIAL	2585.4	2583.9	-0.06%	-5.31%
SERVICES	1641.8	1639.7	-0.13%	-0.27%
INDUSTRY	4813.0	4820.3	0.15%	2.15%

STOCK PRICE INDEX WEIGHTED BY FREE FLOAT MARKET CAPITALIZATION ASE20 (2014=1000)

	1278.9	1277.3	-0.12%	-2.41%
--	--------	--------	--------	--------

Total Return Index ASETR (2021=1074)

	1562.0	1560.1	-0.12%	4.81%
--	--------	--------	--------	-------

STOCK PRICE INDEX WEIGHTED BY MARKET CAPITALIZATION (1991=1000)

	TUESDAY 01/10/2024	WEDNESDAY 02/10/2024	% CHANGE	
			DAY BEFORE	YTD
GENERAL	4324.5	4321.0	-0.08%	-2.16%
BANKS	6323.2	6317.6	-0.09%	-6.21%
INSURANCE	1365.0	1363.8	-0.09%	6.14%
SERVICES	851.2	848.8	-0.27%	-3.39%
INDUSTRY	5927.8	5927.5	0.00%	3.87%

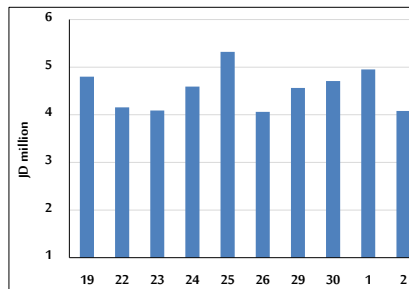
STOCK PRICE MARKET INDEX WEIGHTED BY FREE FLOAT MARKET CAP. (2012=1000)

	TUESDAY 01/10/2024	WEDNESDAY 02/10/2024	% CHANGE	
			DAY BEFORE	YTD
FIRST MARKET	1328.7	1327.6	-0.08%	-2.31%
SECOND MARKET	802.2	804.1	0.24%	-6.96%

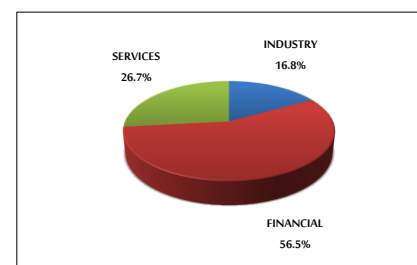
MARKET CAPITALIZATION (JD)

	16,517,201,556	16,508,137,633	-0.05%	-2.54%
--	----------------	----------------	--------	--------

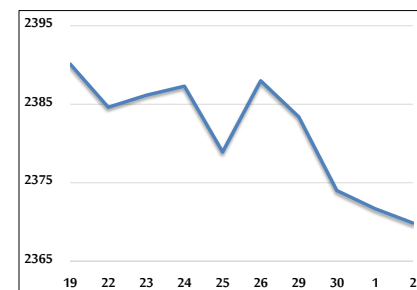
VALUE TRADED FROM 19/9 TO 2/10/2024



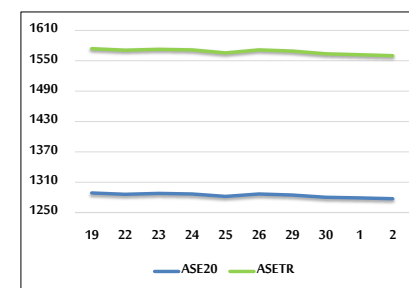
VALUE TRADED BY SECTOR WEDNESDAY 2/10/2024



GENERAL FREE FLOAT PRICE INDEX FROM 19/9 TO 2/10/2024



ASE20 and ASETR FREE FLOAT PRICE INDEX FROM 19/9 TO 2/10/2024



STOCK PRICE INDEX FROM 19/9 TO 2/10/2024

