

## Daily Summary for Amman Stock Exchange

### VALUE TRADED (JD)

	2023	2024	NET CHANGE	CHANGE (%)
Daily	5,996,151	4,952,353	-1,043,798	-17.41%
Cumulative (1/10-1/10)	5,996,151	4,952,353	-1,043,798	-17.41%
Cumulative (2/1-1/10)	1,180,546,826	882,698,165	-297,848,661	-25.23%

### NO. OF SHARES TRADED

	2023	2024	NET CHANGE	CHANGE (%)
Daily	7,376,913	3,260,958	-4,115,955	-55.80%
Cumulative (1/10-1/10)	7,376,913	3,260,958	-4,115,955	-55.80%
Cumulative (2/1-1/10)	846,361,690	651,070,927	-195,290,763	-23.07%

### NO. OF TRANSACTIONS

	2023	2024	NET CHANGE	CHANGE (%)
Daily	2,765	1,869	-896	-32.41%
Cumulative (1/10-1/10)	2,765	1,869	-896	-32.41%
Cumulative (2/1-1/10)	534,988	413,475	-121,513	-22.71%

### SOME FINANCIAL RATIOS FOR THE ASE (1/10/2024)

SECTOR	P/E	P/BV	DIVIDEND YIELD (%)	TURNOVER (%)
FINANCIAL	8.625	0.736	6.099	0.053
SERVICES	12.107	1.254	6.183	0.057
INDUSTRY	8.585	1.419	7.946	0.042
OVERALL	8.523	0.949	7.040	0.052

### STOCK PRICE INDEX WEIGHTED BY FREE FLOAT MARKET CAPITALIZATION (1999=1000)

	MONDAY 30/09/2024	TUESDAY 01/10/2024	% CHANGE	
			DAY BEFORE	YTD
GENERAL	2374.0	2371.7	-0.10%	-2.45%
FINANCIAL	2592.4	2585.4	-0.27%	-5.26%
SERVICES	1640.1	1641.8	0.11%	-0.13%
INDUSTRY	4792.6	4813.0	0.42%	2.00%

### STOCK PRICE INDEX WEIGHTED BY FREE FLOAT MARKET CAPITALIZATION ASE20 (2014=1000)

	1280.3	1278.9	-0.11%	-2.29%
--	--------	--------	--------	--------

### Total Return Index ASETR (2021=1074)

	1563.7	1562.0	-0.11%	4.94%
--	--------	--------	--------	-------

### STOCK PRICE INDEX WEIGHTED BY MARKET CAPITALIZATION (1991=1000)

	MONDAY 30/09/2024	TUESDAY 01/10/2024	% CHANGE	
			DAY BEFORE	YTD
GENERAL	4316.5	4324.5	0.19%	-2.08%
BANKS	6350.4	6323.2	-0.43%	-6.12%
INSURANCE	1361.2	1365.0	0.28%	6.23%
SERVICES	850.0	851.2	0.13%	-3.13%
INDUSTRY	5869.2	5927.8	1.00%	3.87%

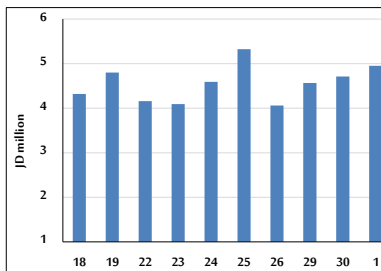
### STOCK PRICE MARKET INDEX WEIGHTED BY FREE FLOAT MARKET CAP. (2012=1000)

	MONDAY 30/09/2024	TUESDAY 01/10/2024	% CHANGE	
			DAY BEFORE	YTD
FIRST MARKET	1329.6	1328.7	-0.07%	-2.23%
SECOND MARKET	799.7	802.2	0.32%	-7.18%

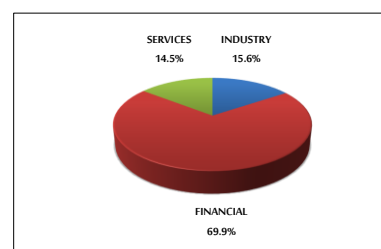
### MARKET CAPITALIZATION (JD)

	16,487,152,026	16,517,201,556	0.18%	-2.49%
--	----------------	----------------	-------	--------

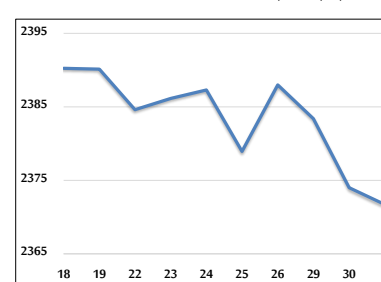
### VALUE TRADED FROM 18/9 TO 1/10/2024



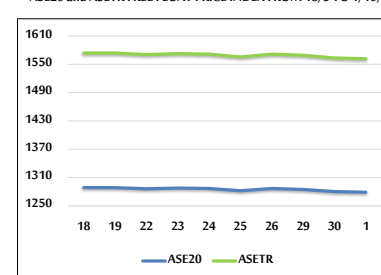
### VALUE TRADED BY SECTOR TUESDAY 1/10/2024



### GENERAL FREE FLOAT PRICE INDEX FROM 18/9 TO 1/10/2024



### ASE20 and ASETR FREE FLOAT PRICE INDEX FROM 18/9 TO 1/10/2024



### STOCK PRICE INDEX FROM 18/9 TO 1/10/2024

