

## Daily Summary for Amman Stock Exchange

### VALUE TRADED (JD)

	2023	2024	NET CHANGE	CHANGE (%)
Daily	5,986,495	4,709,938	-1,276,557	-21.32%
Cumulative (1/9-30/9)	82,772,007	78,161,436	-4,610,571	-5.57%
Cumulative (2/1-30/9)	1,174,550,675	877,745,812	-296,804,863	-25.27%

### NO. OF SHARES TRADED

	2023	2024	NET CHANGE	CHANGE (%)
Daily	5,962,475	3,533,392	-2,429,083	-40.74%
Cumulative (1/9-30/9)	93,361,461	69,065,769	-24,295,692	-26.02%
Cumulative (2/1-30/9)	838,984,777	647,809,969	-191,174,808	-22.79%

### NO. OF TRANSACTIONS

	2023	2024	NET CHANGE	CHANGE (%)
Daily	3,129	2,435	-694	-22.18%
Cumulative (1/9-30/9)	53,182	38,963	-14,219	-26.74%
Cumulative (2/1-30/9)	532,223	411,606	-120,617	-22.66%

### SOME FINANCIAL RATIOS FOR THE ASE (30/9/2024)

SECTOR	P/E	P/BV	DIVIDEND YIELD (%)	TURNOVER (%)
FINANCIAL	8.646	0.739	6.077	0.056
SERVICES	12.095	1.253	6.189	0.059
INDUSTRY	8.498	1.405	8.027	0.055
OVERALL	8.383	0.949	7.148	0.056

### STOCK PRICE INDEX WEIGHTED BY FREE FLOAT MARKET CAPITALIZATION (1999=1000)

	SUNDAY 29/09/2024	MONDAY 30/09/2024	% CHANGE	
			DAY BEFORE	YTD
GENERAL	2383.4	2374.0	-0.39%	-2.35%
FINANCIAL	2597.3	2592.4	-0.19%	-5.00%
SERVICES	1643.3	1640.1	-0.20%	-0.24%
INDUSTRY	4841.4	4792.6	-1.01%	1.57%

### STOCK PRICE INDEX WEIGHTED BY FREE FLOAT MARKET CAPITALIZATION ASE20 (2014=1000)

	1284.7	1280.3	-0.35%	-2.18%
--	--------	--------	--------	--------

### Total Return Index ASETR (2021=1074)

	1569.1	1563.7	-0.35%	5.05%
--	--------	--------	--------	-------

### STOCK PRICE INDEX WEIGHTED BY MARKET CAPITALIZATION (1991=1000)

	SUNDAY 29/09/2024	MONDAY 30/09/2024	% CHANGE	
			DAY BEFORE	YTD
GENERAL	4351.6	4316.5	-0.81%	-2.26%
BANKS	6351.1	6350.4	-0.01%	-5.72%
INSURANCE	1355.0	1361.2	0.45%	5.93%
SERVICES	857.9	850.0	-0.92%	-3.25%
INDUSTRY	5976.5	5869.2	-1.80%	2.85%

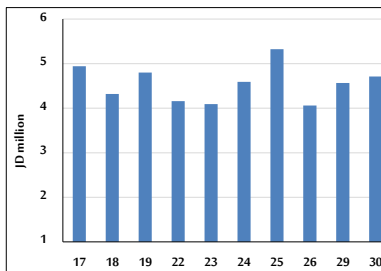
### STOCK PRICE MARKET INDEX WEIGHTED BY FREE FLOAT MARKET CAP. (2012=1000)

	SUNDAY 29/09/2024	MONDAY 30/09/2024	% CHANGE	
			DAY BEFORE	YTD
FIRST MARKET	1334.8	1329.6	-0.39%	-2.16%
SECOND MARKET	801.6	799.7	-0.24%	-7.47%

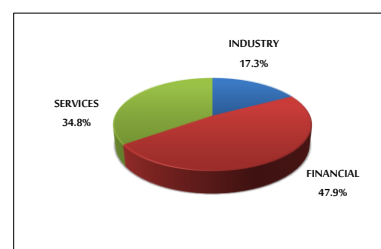
### MARKET CAPITALIZATION (JD)

	16,605,336,722	16,487,152,026	-0.71%	-2.67%
--	----------------	----------------	--------	--------

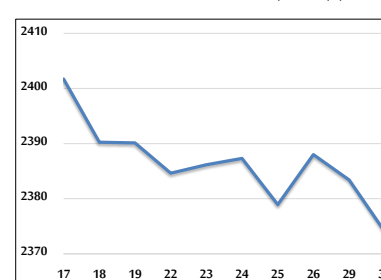
### VALUE TRADED FROM 17/9 TO 30/9/2024



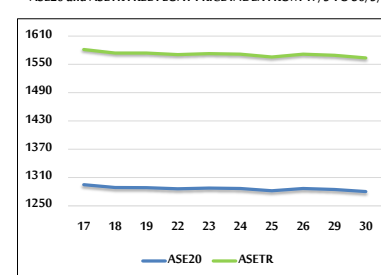
### VALUE TRADED BY SECTOR MONDAY 30/9/2024



### GENERAL FREE FLOAT PRICE INDEX FROM 17/9 TO 30/9/2024



### ASE20 and ASETR FREE FLOAT PRICE INDEX FROM 17/9 TO 30/9/2024



### STOCK PRICE INDEX FROM 17/9 TO 30/9/2024

