

Daily Summary for Amman Stock Exchange

VALUE TRADED (JD)

	2023	2024	NET CHANGE	CHANGE (%)
Daily	6,184,762	4,061,249	-2,123,513	-34.33%
Cumulative (1/9-26/9)	76,785,512	68,886,685	-7,898,827	-10.29%
Cumulative (2/1-26/9)	1,168,564,180	868,471,061	-300,093,119	-25.68%

NO. OF SHARES TRADED

	2023	2024	NET CHANGE	CHANGE (%)
Daily	5,375,065	6,458,391	1,083,326	20.15%
Cumulative (1/9-26/9)	87,398,986	62,528,600	-24,870,386	-28.46%
Cumulative (2/1-26/9)	833,022,302	641,272,800	-191,749,502	-23.02%

NO. OF TRANSACTIONS

	2023	2024	NET CHANGE	CHANGE (%)
Daily	2,911	2,125	-786	-27.00%
Cumulative (1/9-26/9)	50,053	34,844	-15,209	-30.39%
Cumulative (2/1-26/9)	529,094	407,487	-121,607	-22.98%

SOME FINANCIAL RATIOS FOR THE ASE (26/9/2024)

SECTOR	P/E	P/BV	DIVIDEND YIELD (%)	TURNOVER (%)
FINANCIAL	8.647	0.739	6.077	0.035
SERVICES	12.199	1.264	6.136	0.359
INDUSTRY	8.687	1.436	7.852	0.055
OVERALL	8.464	0.958	7.079	0.103

STOCK PRICE INDEX WEIGHTED BY FREE FLOAT MARKET CAPITALIZATION (1999=1000)

	WEDNESDAY 25/09/2024	THURSDAY 26/09/2024	% CHANGE	
			DAY BEFORE	YTD
GENERAL	2378.9	2388.0	0.38%	-1.78%
FINANCIAL	2588.7	2599.7	0.42%	-4.74%
SERVICES	1647.3	1651.4	0.25%	0.45%
INDUSTRY	4839.5	4859.2	0.41%	2.98%

STOCK PRICE INDEX WEIGHTED BY FREE FLOAT MARKET CAPITALIZATION ASE20 (2014=1000)

	1282.0	1286.8	0.38%	-1.68%
--	--------	--------	-------	--------

Total Return Index ASETR (2021=1074)

	1565.8	1571.6	0.38%	5.59%
--	--------	--------	-------	-------

STOCK PRICE INDEX WEIGHTED BY MARKET CAPITALIZATION (1991=1000)

	WEDNESDAY 25/09/2024	THURSDAY 26/09/2024	% CHANGE	
			DAY BEFORE	YTD
GENERAL	4345.9	4358.4	0.29%	-1.31%
BANKS	6341.2	6349.8	0.14%	-5.73%
INSURANCE	1341.5	1347.5	0.45%	4.87%
SERVICES	856.4	861.6	0.61%	-1.94%
INDUSTRY	5972.0	5994.4	0.38%	5.04%

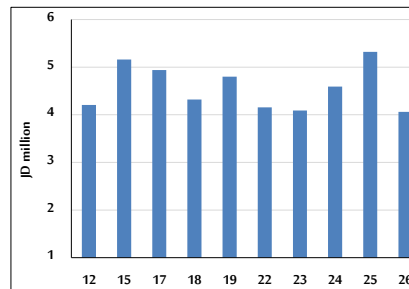
STOCK PRICE MARKET INDEX WEIGHTED BY FREE FLOAT MARKET CAP. (2012=1000)

	WEDNESDAY 25/09/2024	THURSDAY 26/09/2024	% CHANGE	
			DAY BEFORE	YTD
FIRST MARKET	1332.3	1337.2	0.36%	-1.60%
SECOND MARKET	800.9	805.4	0.56%	-6.81%

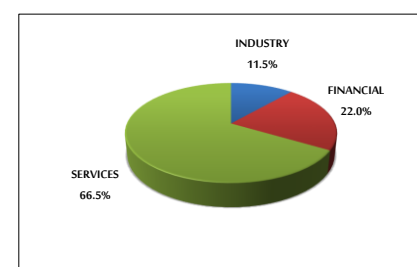
MARKET CAPITALIZATION (JD)

	16,588,485,674	16,634,622,227	0.28%	-1.80%
--	----------------	----------------	-------	--------

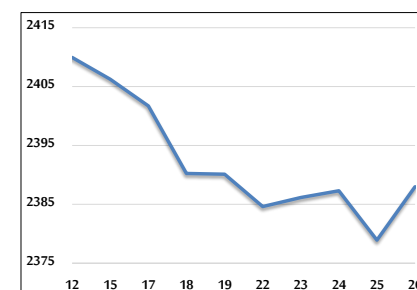
VALUE TRADED FROM 12/9 TO 26/9/2024



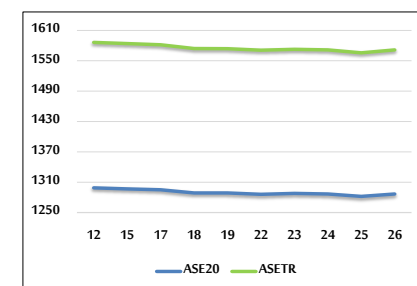
VALUE TRADED BY SECTOR THURSDAY 26/9/2024



GENERAL FREE FLOAT PRICE INDEX FROM 12/9 TO 26/9/2024



ASE20 and ASETR FREE FLOAT PRICE INDEX FROM 12/9 TO 26/9/2024



STOCK PRICE INDEX FROM 12/9 TO 26/9/2024

