

Daily Summary for Amman Stock Exchange

VALUE TRADED (JD)

	2023	2024	NET CHANGE	CHANGE (%)
Daily	5,688,475	5,322,485	-365,990	-6.43%
Cumulative (1/9-25/9)	70,600,750	64,825,436	-5,775,314	-8.18%
Cumulative (2/1-25/9)	1,162,379,418	864,409,812	-297,969,606	-25.63%

NO. OF SHARES TRADED

	2023	2024	NET CHANGE	CHANGE (%)
Daily	4,910,024	2,899,831	-2,010,193	-40.94%
Cumulative (1/9-25/9)	82,023,921	56,070,209	-25,953,712	-31.64%
Cumulative (2/1-25/9)	827,647,237	634,814,409	-192,832,828	-23.30%

NO. OF TRANSACTIONS

	2023	2024	NET CHANGE	CHANGE (%)
Daily	2,540	2,149	-391	-15.39%
Cumulative (1/9-25/9)	47,142	32,719	-14,423	-30.59%
Cumulative (2/1-25/9)	526,183	405,362	-120,821	-22.96%

SOME FINANCIAL RATIOS FOR THE ASE (25/9/2024)

SECTOR	P/E	P/BV	DIVIDEND YIELD (%)	TURNOVER (%)
FINANCIAL	8.632	0.738	6.087	0.029
SERVICES	12.145	1.258	6.164	0.116
INDUSTRY	8.655	1.431	7.881	0.029
OVERALL	8.440	0.955	7.099	0.046

STOCK PRICE INDEX WEIGHTED BY FREE FLOAT MARKET CAPITALIZATION (1999=1000)

	TUESDAY 24/09/2024	WEDNESDAY 25/09/2024	% CHANGE	
			DAY BEFORE	YTD
GENERAL	2387.3	2378.9	-0.35%	-2.15%
FINANCIAL	2594.4	2588.7	-0.22%	-5.14%
SERVICES	1657.5	1647.3	-0.62%	0.20%
INDUSTRY	4873.9	4839.5	-0.71%	2.56%

STOCK PRICE INDEX WEIGHTED BY FREE FLOAT MARKET CAPITALIZATION ASE20 (2014=1000)

	1286.7	1282.0	-0.37%	-2.05%
--	--------	--------	--------	--------

Total Return Index ASETR (2021=1074)

	1571.6	1565.8	-0.37%	5.19%
--	--------	--------	--------	-------

STOCK PRICE INDEX WEIGHTED BY MARKET CAPITALIZATION (1991=1000)

	TUESDAY 24/09/2024	WEDNESDAY 25/09/2024	% CHANGE	
			DAY BEFORE	YTD
GENERAL	4368.1	4345.9	-0.51%	-1.59%
BANKS	6358.1	6341.2	-0.27%	-5.86%
INSURANCE	1337.9	1341.5	0.27%	4.40%
SERVICES	860.5	856.4	-0.48%	-2.53%
INDUSTRY	6021.4	5972.0	-0.82%	4.65%

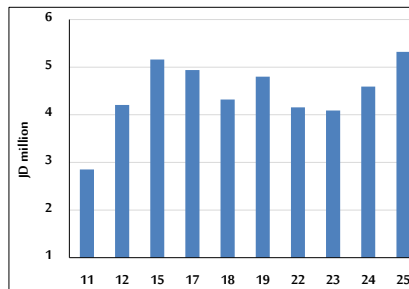
STOCK PRICE MARKET INDEX WEIGHTED BY FREE FLOAT MARKET CAP. (2012=1000)

	TUESDAY 24/09/2024	WEDNESDAY 25/09/2024	% CHANGE	
			DAY BEFORE	YTD
FIRST MARKET	1336.8	1332.3	-0.33%	-1.96%
SECOND MARKET	804.0	800.9	-0.38%	-7.33%

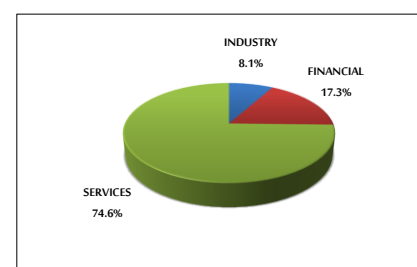
MARKET CAPITALIZATION (JD)

	16,673,049,640	16,588,485,674	-0.51%	-2.07%
--	----------------	----------------	--------	--------

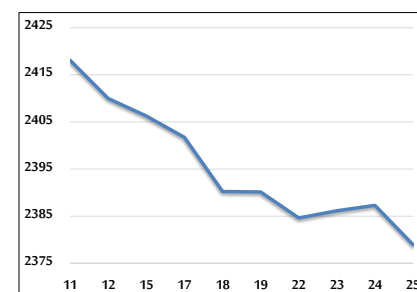
VALUE TRADED FROM 11/9 TO 25/9/2024



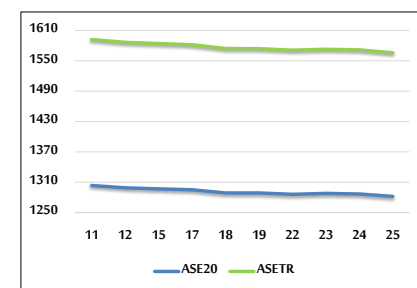
VALUE TRADED BY SECTOR WEDNESDAY 25/9/2024



GENERAL FREE FLOAT PRICE INDEX FROM 11/9 TO 25/9/2024



ASE20 and ASETR FREE FLOAT PRICE INDEX FROM 11/9 TO 25/9/2024



STOCK PRICE INDEX FROM 11/9 TO 25/9/2024

