

## Daily Summary for Amman Stock Exchange

### VALUE TRADED (JD)

	2023	2024	NET CHANGE	CHANGE (%)
Daily	5,304,508	4,592,356	-712,152	-13.43%
Cumulative (1/9-24/9)	64,912,275	59,502,951	-5,409,324	-8.33%
Cumulative (2/1-24/9)	1,156,690,943	859,087,327	-297,603,616	-25.73%

### NO. OF SHARES TRADED

	2023	2024	NET CHANGE	CHANGE (%)
Daily	5,134,256	5,464,784	330,528	6.44%
Cumulative (1/9-24/9)	77,113,897	53,170,378	-23,943,519	-31.05%
Cumulative (2/1-24/9)	822,737,213	631,914,578	-190,822,635	-23.19%

### NO. OF TRANSACTIONS

	2023	2024	NET CHANGE	CHANGE (%)
Daily	2,797	1,769	-1,028	-36.75%
Cumulative (1/9-24/9)	44,602	30,570	-14,032	-31.46%
Cumulative (2/1-24/9)	523,643	403,213	-120,430	-23.00%

### SOME FINANCIAL RATIOS FOR THE ASE (24/9/2024)

SECTOR	P/E	P/BV	DIVIDEND YIELD (%)	TURNOVER (%)
FINANCIAL	8.652	0.739	6.073	0.108
SERVICES	12.224	1.266	6.124	0.056
INDUSTRY	8.730	1.443	7.813	0.028
OVERALL	8.483	0.960	7.063	0.087

### STOCK PRICE INDEX WEIGHTED BY FREE FLOAT MARKET CAPITALIZATION (1999=1000)

	MONDAY 23/09/2024	TUESDAY 24/09/2024	% CHANGE	
			DAY BEFORE	YTD
GENERAL	2386.2	2387.3	0.05%	-1.81%
FINANCIAL	2593.3	2594.4	0.04%	-4.93%
SERVICES	1656.7	1657.5	0.05%	0.82%
INDUSTRY	4878.5	4873.9	-0.09%	3.29%

### STOCK PRICE INDEX WEIGHTED BY FREE FLOAT MARKET CAPITALIZATION ASE20 (2014=1000)

	1287.8	1286.7	-0.08%	-1.69%
--	--------	--------	--------	--------

### Total Return Index ASETR (2021=1074)

	1572.8	1571.6	-0.08%	5.58%
--	--------	--------	--------	-------

### STOCK PRICE INDEX WEIGHTED BY MARKET CAPITALIZATION (1991=1000)

	MONDAY 23/09/2024	TUESDAY 24/09/2024	% CHANGE	
			DAY BEFORE	YTD
GENERAL	4369.1	4368.1	-0.02%	-1.09%
BANKS	6364.7	6358.1	-0.10%	-5.60%
INSURANCE	1337.9	1337.9	0.00%	4.12%
SERVICES	857.5	860.5	0.35%	-2.06%
INDUSTRY	6023.7	6021.4	-0.04%	5.52%

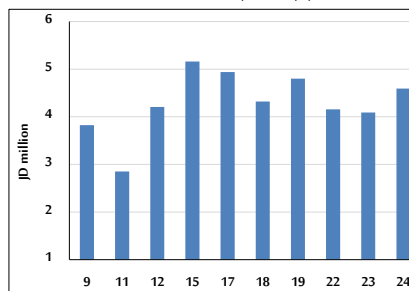
### STOCK PRICE MARKET INDEX WEIGHTED BY FREE FLOAT MARKET CAP. (2012=1000)

	MONDAY 23/09/2024	TUESDAY 24/09/2024	% CHANGE	
			DAY BEFORE	YTD
FIRST MARKET	1336.9	1336.8	0.00%	-1.63%
SECOND MARKET	798.8	804.0	0.64%	-6.98%

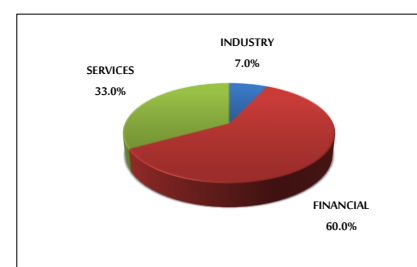
### MARKET CAPITALIZATION (JD)

	16,679,546,509	16,673,049,640	-0.04%	-1.57%
--	----------------	----------------	--------	--------

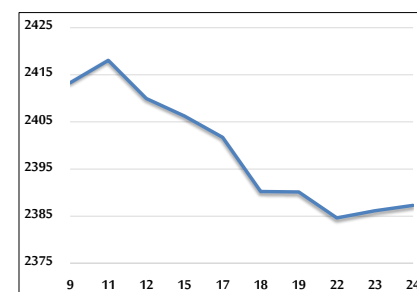
### VALUE TRADED FROM 9/9 TO 24/9/2024



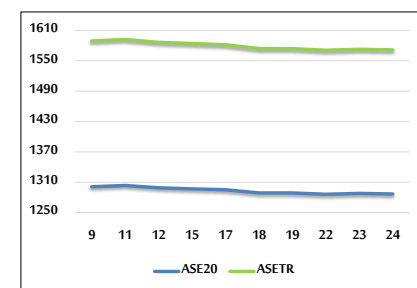
### VALUE TRADED BY SECTOR TUESDAY 24/9/2024



### GENERAL FREE FLOAT PRICE INDEX FROM 9/9 TO 24/9/2024



### ASE20 and ASETR FREE FLOAT PRICE INDEX FROM 9/9 TO 24/9/2024



### STOCK PRICE INDEX FROM 9/9 TO 24/9/2024

