

Daily Summary for Amman Stock Exchange

VALUE TRADED (JD)

	2023	2024	NET CHANGE	CHANGE (%)
Daily	3,816,364	4,091,000	274,636	7.20%
Cumulative (1/9-23/9)	59,607,767	54,910,595	-4,697,172	-7.88%
Cumulative (2/1-23/9)	1,151,386,435	854,494,971	-296,891,464	-25.79%

NO. OF SHARES TRADED

	2023	2024	NET CHANGE	CHANGE (%)
Daily	3,194,967	3,297,080	102,113	3.20%
Cumulative (1/9-23/9)	71,979,641	47,705,594	-24,274,047	-33.72%
Cumulative (2/1-23/9)	817,602,957	626,449,794	-191,153,163	-23.38%

NO. OF TRANSACTIONS

	2023	2024	NET CHANGE	CHANGE (%)
Daily	2,463	1,900	-563	-22.86%
Cumulative (1/9-23/9)	41,805	28,801	-13,004	-31.11%
Cumulative (2/1-23/9)	520,846	401,444	-119,402	-22.92%

SOME FINANCIAL RATIOS FOR THE ASE (23/9/2024)

SECTOR	P/E	P/BV	DIVIDEND YIELD (%)	TURNOVER (%)
FINANCIAL	8.656	0.740	6.070	0.048
SERVICES	12.216	1.266	6.128	0.092
INDUSTRY	8.736	1.444	7.808	0.015
OVERALL	8.485	0.960	7.061	0.053

STOCK PRICE INDEX WEIGHTED BY FREE FLOAT MARKET CAPITALIZATION (1999=1000)

	SUNDAY 22/09/2024	MONDAY 23/09/2024	% CHANGE	
			DAY BEFORE	YTD
GENERAL	2384.6	2386.2	0.06%	-1.85%
FINANCIAL	2590.5	2593.3	0.11%	-4.97%
SERVICES	1657.0	1656.7	-0.02%	0.77%
INDUSTRY	4879.8	4878.5	-0.03%	3.39%

STOCK PRICE INDEX WEIGHTED BY FREE FLOAT MARKET CAPITALIZATION ASE20 (2014=1000)

	1286.1	1287.8	0.13%	-1.61%
--	--------	--------	-------	--------

Total Return Index ASETR (2021=1074)

	1570.9	1572.8	0.13%	5.67%
--	--------	--------	-------	-------

STOCK PRICE INDEX WEIGHTED BY MARKET CAPITALIZATION (1991=1000)

	SUNDAY 22/09/2024	MONDAY 23/09/2024	% CHANGE	
			DAY BEFORE	YTD
GENERAL	4364.4	4369.1	0.11%	-1.07%
BANKS	6348.0	6364.7	0.26%	-5.51%
INSURANCE	1337.8	1337.9	0.01%	4.12%
SERVICES	859.7	857.5	-0.25%	-2.40%
INDUSTRY	6022.8	6023.7	0.02%	5.56%

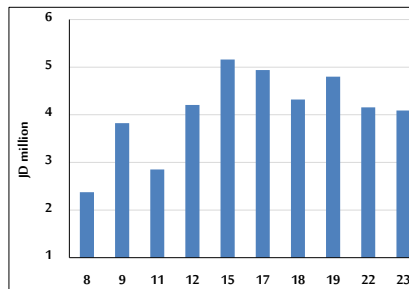
STOCK PRICE MARKET INDEX WEIGHTED BY FREE FLOAT MARKET CAP. (2012=1000)

	SUNDAY 22/09/2024	MONDAY 23/09/2024	% CHANGE	
			DAY BEFORE	YTD
FIRST MARKET	1335.7	1336.9	0.09%	-1.63%
SECOND MARKET	801.6	798.8	-0.35%	-7.57%

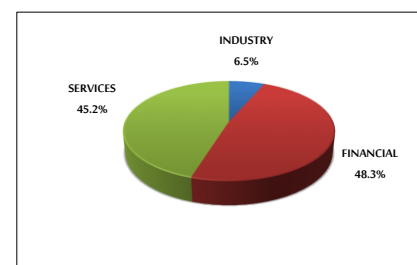
MARKET CAPITALIZATION (JD)

	16,665,507,089	16,679,546,509	0.08%	-1.53%
--	----------------	----------------	-------	--------

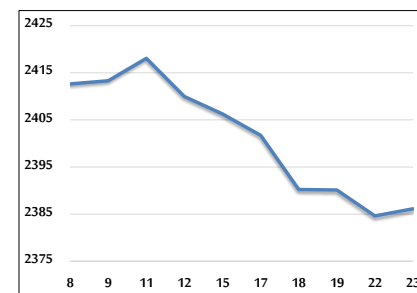
VALUE TRADED FROM 8/9 TO 23/9/2024



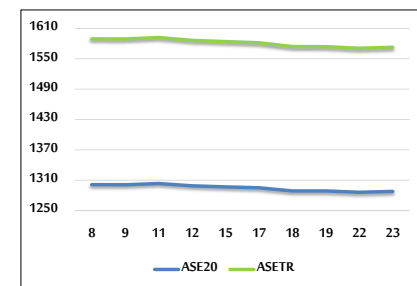
VALUE TRADED BY SECTOR MONDAY 23/9/2024



GENERAL FREE FLOAT PRICE INDEX FROM 8/9 TO 23/9/2024



ASE20 and ASETR FREE FLOAT PRICE INDEX FROM 8/9 TO 23/9/2024



STOCK PRICE INDEX FROM 8/9 TO 23/9/2024

