

## Daily Summary for Amman Stock Exchange

### VALUE TRADED (JD)

	2023	2024	NET CHANGE	CHANGE (%)
Daily	3,151,523	4,157,222	1,005,699	31.91%
Cumulative (1/9-22/9)	55,791,403	50,819,595	-4,971,808	-8.91%
Cumulative (2/1-22/9)	1,147,570,071	850,403,971	-297,166,100	-25.90%

### NO. OF SHARES TRADED

	2023	2024	NET CHANGE	CHANGE (%)
Daily	3,226,321	3,008,631	-217,690	-6.75%
Cumulative (1/9-22/9)	68,784,674	44,408,514	-24,376,160	-35.44%
Cumulative (2/1-22/9)	814,407,990	623,152,714	-191,255,276	-23.48%

### NO. OF TRANSACTIONS

	2023	2024	NET CHANGE	CHANGE (%)
Daily	2,442	1,783	-659	-26.99%
Cumulative (1/9-22/9)	39,342	26,901	-12,441	-31.62%
Cumulative (2/1-22/9)	518,383	399,544	-118,839	-22.92%

### SOME FINANCIAL RATIOS FOR THE ASE (22/9/2024)

SECTOR	P/E	P/BV	DIVIDEND YIELD (%)	TURNOVER (%)
FINANCIAL	8.636	0.738	6.084	0.037
SERVICES	12.229	1.267	6.121	0.094
INDUSTRY	8.739	1.445	7.805	0.033
OVERALL	8.476	0.959	7.069	0.048

### STOCK PRICE INDEX WEIGHTED BY FREE FLOAT MARKET CAPITALIZATION (1999=1000)

	THURSDAY 19/09/2024	SUNDAY 22/09/2024	% CHANGE	
			DAY BEFORE	YTD
GENERAL	2390.1	2384.6	-0.23%	-1.92%
FINANCIAL	2592.9	2590.5	-0.10%	-5.08%
SERVICES	1662.4	1657.0	-0.33%	0.79%
INDUSTRY	4896.4	4879.8	-0.34%	3.41%

### STOCK PRICE INDEX WEIGHTED BY FREE FLOAT MARKET CAPITALIZATION ASE20 (2014=1000)

	1288.7	1286.1	-0.20%	-1.73%
--	--------	--------	--------	--------

### Total Return Index ASETR (2021=1074)

	1574.0	1570.9	-0.20%	5.54%
--	--------	--------	--------	-------

### STOCK PRICE INDEX WEIGHTED BY MARKET CAPITALIZATION (1991=1000)

	THURSDAY 19/09/2024	SUNDAY 22/09/2024	% CHANGE	
			DAY BEFORE	YTD
GENERAL	4373.3	4364.4	-0.20%	-1.18%
BANKS	6351.7	6348.0	-0.06%	-5.76%
INSURANCE	1339.5	1337.8	-0.13%	4.11%
SERVICES	864.1	859.7	-0.51%	-2.15%
INDUSTRY	6040.1	6022.8	-0.29%	5.54%

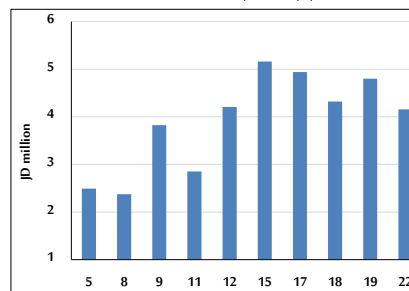
### STOCK PRICE MARKET INDEX WEIGHTED BY FREE FLOAT MARKET CAP. (2012=1000)

	THURSDAY 19/09/2024	SUNDAY 22/09/2024	% CHANGE	
			DAY BEFORE	YTD
FIRST MARKET	1338.5	1335.7	-0.21%	-1.71%
SECOND MARKET	806.0	801.6	-0.55%	-7.25%

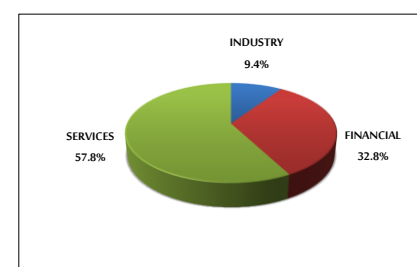
### MARKET CAPITALIZATION (JD)

	16,695,731,740	16,665,507,089	-0.18%	-1.62%
--	----------------	----------------	--------	--------

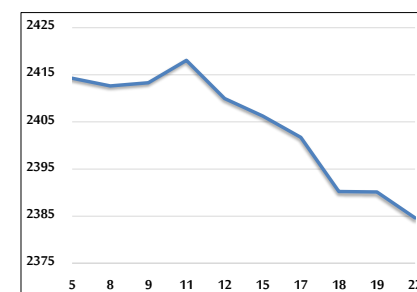
### VALUE TRADED FROM 5/9 TO 22/9/2024



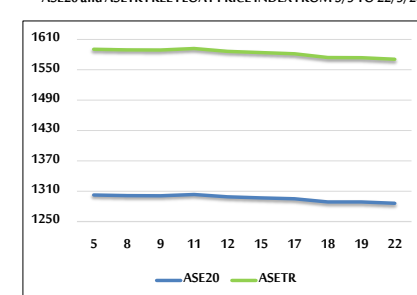
### VALUE TRADED BY SECTOR SUNDAY 22/9/2024



### GENERAL FREE FLOAT PRICE INDEX FROM 5/9 TO 22/9/2024



### ASE20 and ASETR FREE FLOAT PRICE INDEX FROM 5/9 TO 22/9/2024



### STOCK PRICE INDEX FROM 5/9 TO 22/9/2024

