

## Daily Summary for Amman Stock Exchange

### VALUE TRADED (JD)

	2023	2024	NET CHANGE	CHANGE (%)
Daily	4,429,655	2,492,509	-1,937,146	-43.73%
Cumulative (1/9-1/9)	4,429,655	2,492,509	-1,937,146	-43.73%
Cumulative (2/1-1/9)	1,096,208,323	802,076,885	-294,131,438	-26.83%

### NO. OF SHARES TRADED

	2023	2024	NET CHANGE	CHANGE (%)
Daily	4,959,644	1,630,466	-3,329,178	-67.13%
Cumulative (1/9-1/9)	4,959,644	1,630,466	-3,329,178	-67.13%
Cumulative (2/1-1/9)	750,582,960	580,374,666	-170,208,294	-22.68%

### NO. OF TRANSACTIONS

	2023	2024	NET CHANGE	CHANGE (%)
Daily	2,646	1,261	-1,385	-52.34%
Cumulative (1/9-1/9)	2,646	1,261	-1,385	-52.34%
Cumulative (2/1-1/9)	481,687	373,904	-107,783	-22.38%

### SOME FINANCIAL RATIOS FOR THE ASE (1/9/2024)

SECTOR	P/E	P/BV	DIVIDEND YIELD (%)	TURNOVER (%)
FINANCIAL	8.737	0.747	6.019	0.027
SERVICES	12.491	1.294	5.993	0.027
INDUSTRY	8.751	1.447	7.795	0.020
OVERALL	8.573	0.970	6.989	0.026

### STOCK PRICE INDEX WEIGHTED BY FREE FLOAT MARKET CAPITALIZATION (1999=1000)

	THURSDAY 29/08/2024	SUNDAY 01/09/2024	% CHANGE	
			DAY BEFORE	YTD
GENERAL	2413.1	2411.1	-0.09%	-0.83%
FINANCIAL	2616.9	2614.0	-0.11%	-4.21%
SERVICES	1683.5	1683.8	0.02%	2.42%
INDUSTRY	4890.2	4884.3	-0.12%	3.51%

### STOCK PRICE INDEX WEIGHTED BY FREE FLOAT MARKET CAPITALIZATION ASE20 (2014=1000)

	1301.9	1301.2	-0.05%	-0.58%
--	--------	--------	--------	--------

### Total Return Index ASETR (2021=1074)

	1590.1	1589.3	-0.05%	6.77%
--	--------	--------	--------	-------

### STOCK PRICE INDEX WEIGHTED BY MARKET CAPITALIZATION (1991=1000)

	THURSDAY 29/08/2024	SUNDAY 01/09/2024	% CHANGE	
			DAY BEFORE	YTD
GENERAL	4418.3	4414.3	-0.09%	-0.05%
BANKS	6440.7	6428.1	-0.20%	-4.57%
INSURANCE	1344.7	1345.9	0.09%	4.75%
SERVICES	880.0	879.9	-0.02%	0.14%
INDUSTRY	6060.1	6061.4	0.02%	6.22%

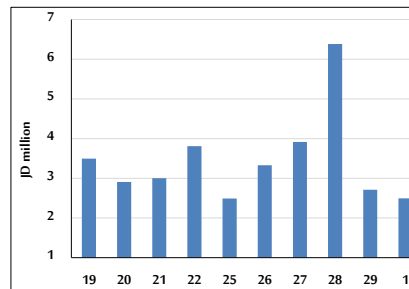
### STOCK PRICE MARKET INDEX WEIGHTED BY FREE FLOAT MARKET CAP. (2012=1000)

	THURSDAY 29/08/2024	SUNDAY 01/09/2024	% CHANGE	
			DAY BEFORE	YTD
FIRST MARKET	1352.6	1351.6	-0.08%	-0.54%
SECOND MARKET	802.5	800.4	-0.27%	-7.39%

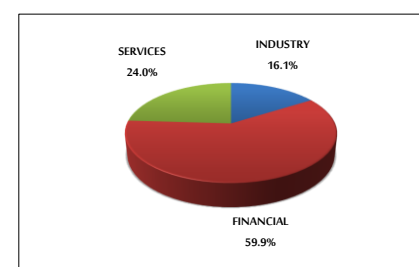
### MARKET CAPITALIZATION (JD)

	16,837,691,602	16,823,257,306	-0.09%	-0.68%
--	----------------	----------------	--------	--------

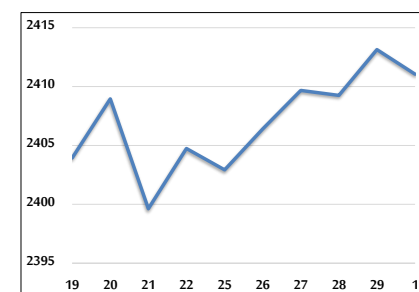
### VALUE TRADED FROM 19/8 TO 1/9/2024



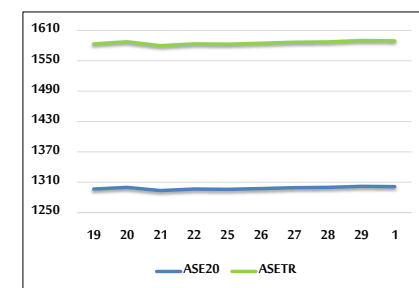
### VALUE TRADED BY SECTOR SUNDAY 1/9/2024



### GENERAL FREE FLOAT PRICE INDEX FROM 19/8 TO 1/9/2024



### ASE20 and ASETR FREE FLOAT PRICE INDEX FROM 19/8 TO 1/9/2024



### STOCK PRICE INDEX FROM 19/8 TO 1/9/2024

