

## Daily Summary for Amman Stock Exchange

### VALUE TRADED (JD)

	2023	2024	NET CHANGE	CHANGE (%)
Daily	5,754,436	2,711,022	-3,043,414	-52.89%
Cumulative (1/8-29/8)	105,898,081	84,806,990	-21,091,091	-19.92%
Cumulative (2/1-29/8)	1,091,778,668	799,584,376	-292,194,292	-26.76%

### NO. OF SHARES TRADED

	2023	2024	NET CHANGE	CHANGE (%)
Daily	4,526,353	2,029,165	-2,497,188	-55.17%
Cumulative (1/8-29/8)	75,422,397	68,266,471	-7,155,926	-9.49%
Cumulative (2/1-29/8)	745,623,316	578,744,200	-166,879,116	-22.38%

### NO. OF TRANSACTIONS

	2023	2024	NET CHANGE	CHANGE (%)
Daily	2,628	1,992	-636	-24.20%
Cumulative (1/8-29/8)	48,544	42,538	-6,006	-12.37%
Cumulative (2/1-29/8)	479,041	372,643	-106,398	-22.21%

### SOME FINANCIAL RATIOS FOR THE ASE (29/8/2024)

SECTOR	P/E	P/BV	DIVIDEND YIELD (%)	TURNOVER (%)
FINANCIAL	8.747	0.748	5.999	0.026
SERVICES	12.491	1.294	5.993	0.047
INDUSTRY	8.751	1.447	7.795	0.045
OVERALL	8.580	0.971	6.983	0.032

### STOCK PRICE INDEX WEIGHTED BY FREE FLOAT MARKET CAPITALIZATION (1999=1000)

	WEDNESDAY 28/08/2024	THURSDAY 29/08/2024	% CHANGE	
			DAY BEFORE	YTD
GENERAL	2409.3	2413.1	0.16%	-0.74%
FINANCIAL	2611.7	2616.9	0.20%	-4.11%
SERVICES	1679.9	1683.5	0.21%	2.40%
INDUSTRY	4887.5	4890.2	0.05%	3.63%

### STOCK PRICE INDEX WEIGHTED BY FREE FLOAT MARKET CAPITALIZATION ASE20 (2014=1000)

	1299.7	1301.9	0.17%	-0.53%
--	--------	--------	-------	--------

### Total Return Index ASETR (2021=1074)

	1587.4	1590.1	0.17%	6.83%
--	--------	--------	-------	-------

### STOCK PRICE INDEX WEIGHTED BY MARKET CAPITALIZATION (1991=1000)

	WEDNESDAY 28/08/2024	THURSDAY 29/08/2024	% CHANGE	
			DAY BEFORE	YTD
GENERAL	4407.4	4418.3	0.25%	0.04%
BANKS	6412.1	6440.7	0.45%	-4.38%
INSURANCE	1339.7	1344.7	0.37%	4.65%
SERVICES	879.6	880.0	0.05%	0.16%
INDUSTRY	6056.8	6060.1	0.05%	6.19%

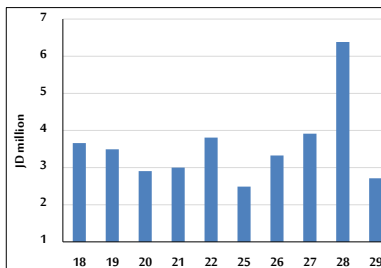
### STOCK PRICE MARKET INDEX WEIGHTED BY FREE FLOAT MARKET CAP. (2012=1000)

	WEDNESDAY 28/08/2024	THURSDAY 29/08/2024	% CHANGE	
			DAY BEFORE	YTD
FIRST MARKET	1350.3	1352.6	0.18%	-0.47%
SECOND MARKET	803.6	802.5	-0.13%	-7.14%

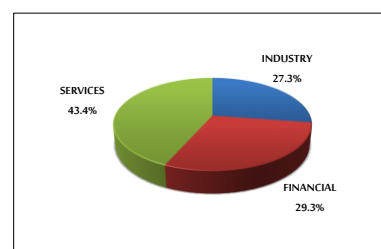
### MARKET CAPITALIZATION (JD)

	16,796,217,016	16,837,691,602	0.25%	-0.60%
--	----------------	----------------	-------	--------

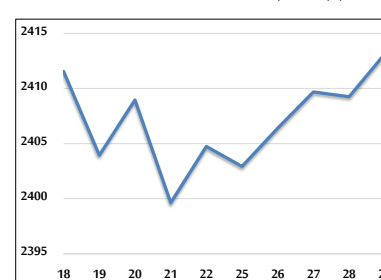
### VALUE TRADED FROM 18/8 TO 29/8/2024



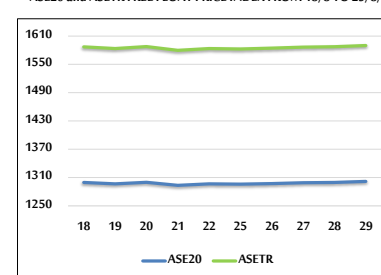
### VALUE TRADED BY SECTOR THURSDAY 29/8/2024



### GENERAL FREE FLOAT PRICE INDEX FROM 18/8 TO 29/8/2024



### ASE20 and ASETR FREE FLOAT PRICE INDEX FROM 18/8 TO 29/8/2024



### STOCK PRICE INDEX FROM 18/8 TO 29/8/2024

