

Daily Summary for Amman Stock Exchange

VALUE TRADED (JD)

	2023	2024	NET CHANGE	CHANGE (%)
Daily	3,056,850	3,326,243	269,393	8.81%
Cumulative (1/8-26/8)	79,938,583	71,801,028	-8,137,555	-10.18%
Cumulative (2/1-26/8)	1,065,819,170	786,578,414	-279,240,756	-26.20%

NO. OF SHARES TRADED

	2023	2024	NET CHANGE	CHANGE (%)
Daily	2,363,238	3,692,962	1,329,724	56.27%
Cumulative (1/8-26/8)	53,961,769	57,729,459	3,767,690	6.98%
Cumulative (2/1-26/8)	724,162,688	568,207,188	-155,955,500	-21.54%

NO. OF TRANSACTIONS

	2023	2024	NET CHANGE	CHANGE (%)
Daily	2,033	2,129	96	4.72%
Cumulative (1/8-26/8)	35,856	36,299	443	1.24%
Cumulative (2/1-26/8)	466,353	366,404	-99,949	-21.43%

SOME FINANCIAL RATIOS FOR THE ASE (26/8/2024)

SECTOR	P/E	P/BV	DIVIDEND YIELD (%)	TURNOVER (%)
FINANCIAL	8.699	0.744	6.032	0.043
SERVICES	12.450	1.290	6.012	0.108
INDUSTRY	8.764	1.449	7.783	0.064
OVERALL	8.557	0.969	7.002	0.059

STOCK PRICE INDEX WEIGHTED BY FREE FLOAT MARKET CAPITALIZATION (1999=1000)

	SUNDAY 25/08/2024	MONDAY 26/08/2024	% CHANGE	
			DAY BEFORE	YTD
GENERAL	2402.9	2406.4	0.14%	-1.02%
FINANCIAL	2610.5	2608.0	-0.10%	-4.43%
SERVICES	1672.4	1676.8	0.26%	1.99%
INDUSTRY	4862.0	4893.6	0.65%	3.71%

STOCK PRICE INDEX WEIGHTED BY FREE FLOAT MARKET CAPITALIZATION ASE20 (2014=1000)

	1295.9	1297.4	0.11%	-0.87%
--	--------	--------	-------	--------

Total Return Index ASETR (2021=1074)

	1582.8	1584.6	0.11%	6.46%
--	--------	--------	-------	-------

STOCK PRICE INDEX WEIGHTED BY MARKET CAPITALIZATION (1991=1000)

	SUNDAY 25/08/2024	MONDAY 26/08/2024	% CHANGE	
			DAY BEFORE	YTD
GENERAL	4397.7	4406.4	0.20%	-0.22%
BANKS	6417.3	6405.0	-0.19%	-4.91%
INSURANCE	1328.5	1318.4	-0.76%	2.61%
SERVICES	880.2	880.3	0.01%	0.19%
INDUSTRY	6014.7	6060.1	0.75%	6.19%

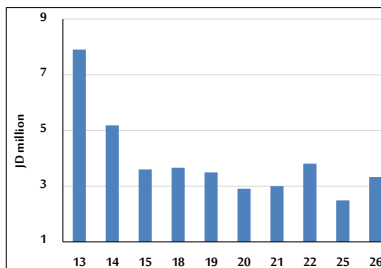
STOCK PRICE MARKET INDEX WEIGHTED BY FREE FLOAT MARKET CAP. (2012=1000)

	SUNDAY 25/08/2024	MONDAY 26/08/2024	% CHANGE	
			DAY BEFORE	YTD
FIRST MARKET	1346.6	1348.3	0.13%	-0.79%
SECOND MARKET	807.7	809.0	0.16%	-6.39%

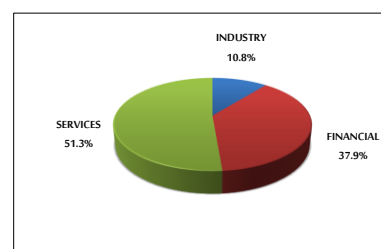
MARKET CAPITALIZATION (JD)

	16,762,683,350	16,792,024,576	0.18%	-0.87%
--	----------------	----------------	-------	--------

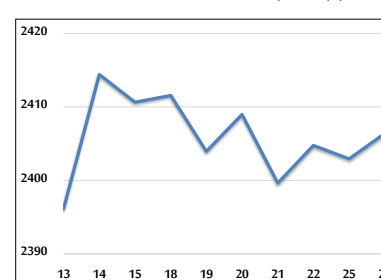
VALUE TRADED FROM 13/8 TO 26/8/2024



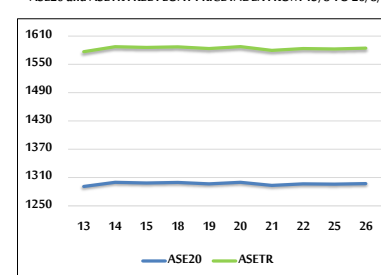
VALUE TRADED BY SECTOR MONDAY 26/8/2024



GENERAL FREE FLOAT PRICE INDEX FROM 13/8 TO 26/8/2024



ASE20 and ASETR FREE FLOAT PRICE INDEX FROM 13/8 TO 26/8/2024



STOCK PRICE INDEX FROM 13/8 TO 26/8/2024

