

Daily Summary for Amman Stock Exchange

VALUE TRADED (JD)

	2023	2024	NET CHANGE	CHANGE (%)
Daily	3,637,156	2,489,763	-1,147,393	-31.55%
Cumulative (1/8-25/8)	76,881,733	68,474,785	-8,406,948	-10.93%
Cumulative (2/1-25/8)	1,062,762,320	783,252,171	-279,510,149	-26.30%

NO. OF SHARES TRADED

	2023	2024	NET CHANGE	CHANGE (%)
Daily	4,569,438	1,944,828	-2,624,610	-57.44%
Cumulative (1/8-25/8)	51,598,531	54,036,497	2,437,966	4.72%
Cumulative (2/1-25/8)	721,799,450	564,514,226	-157,285,224	-21.79%

NO. OF TRANSACTIONS

	2023	2024	NET CHANGE	CHANGE (%)
Daily	2,103	1,424	-679	-32.29%
Cumulative (1/8-25/8)	33,823	34,170	347	1.03%
Cumulative (2/1-25/8)	464,320	364,275	-100,045	-21.55%

SOME FINANCIAL RATIOS FOR THE ASE (25/8/2024)

SECTOR	P/E	P/BV	DIVIDEND YIELD (%)	TURNOVER (%)
FINANCIAL	8.715	0.745	6.021	0.030
SERVICES	12.443	1.289	6.016	0.038
INDUSTRY	8.699	1.438	7.842	0.026
OVERALL	8.541	0.967	7.015	0.031

STOCK PRICE INDEX WEIGHTED BY FREE FLOAT MARKET CAPITALIZATION (1999=1000)

	THURSDAY 22/08/2024	SUNDAY 25/08/2024	% CHANGE	
			DAY BEFORE	YTD
GENERAL	2404.7	2402.9	-0.08%	-1.16%
FINANCIAL	2610.3	2610.5	0.01%	-4.34%
SERVICES	1679.2	1672.4	-0.41%	1.72%
INDUSTRY	4855.5	4862.0	0.13%	3.04%

STOCK PRICE INDEX WEIGHTED BY FREE FLOAT MARKET CAPITALIZATION ASE20 (2014=1000)

	1296.6	1295.9	-0.05%	-0.99%
--	--------	--------	--------	--------

Total Return Index ASETR (2021=1074)

	1583.6	1582.8	-0.05%	6.34%
--	--------	--------	--------	-------

STOCK PRICE INDEX WEIGHTED BY MARKET CAPITALIZATION (1991=1000)

	THURSDAY 22/08/2024	SUNDAY 25/08/2024	% CHANGE	
			DAY BEFORE	YTD
GENERAL	4389.7	4397.7	0.18%	-0.42%
BANKS	6401.4	6417.3	0.25%	-4.73%
INSURANCE	1341.1	1328.5	-0.94%	3.39%
SERVICES	880.0	880.2	0.02%	0.18%
INDUSTRY	6005.7	6014.7	0.15%	5.40%

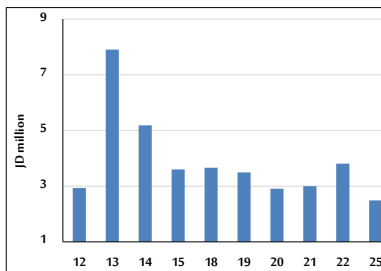
STOCK PRICE MARKET INDEX WEIGHTED BY FREE FLOAT MARKET CAP. (2012=1000)

	THURSDAY 22/08/2024	SUNDAY 25/08/2024	% CHANGE	
			DAY BEFORE	YTD
FIRST MARKET	1346.8	1346.6	-0.02%	-0.91%
SECOND MARKET	816.0	807.7	-1.01%	-6.54%

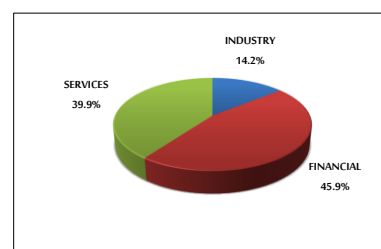
MARKET CAPITALIZATION (JD)

	16,735,166,492	16,762,683,350	0.16%	-1.04%
--	----------------	----------------	-------	--------

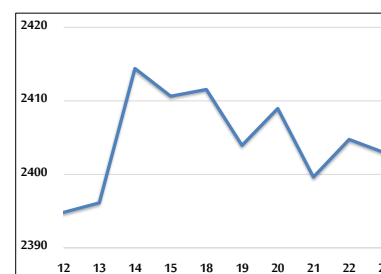
VALUE TRADED FROM 12/8 TO 25/8/2024



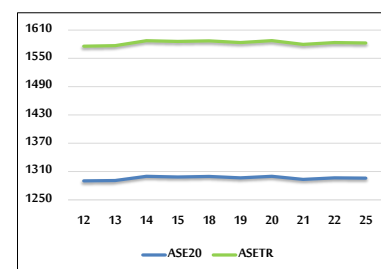
VALUE TRADED BY SECTOR SUNDAY 25/8/2024



GENERAL FREE FLOAT PRICE INDEX FROM 12/8 TO 25/8/2024



ASE20 and ASETR FREE FLOAT PRICE INDEX FROM 12/8 TO 25/8/2024



STOCK PRICE INDEX FROM 12/8 TO 25/8/2024

