

## Daily Summary for Amman Stock Exchange

### VALUE TRADED (JD)

	2023	2024	NET CHANGE	CHANGE (%)
Daily	14,294,210	3,808,279	-10,485,931	-73.36%
Cumulative (1/8-22/8)	73,244,577	65,985,022	-7,259,555	-9.91%
Cumulative (2/1-22/8)	1,059,125,164	780,762,408	-278,362,756	-26.28%

### NO. OF SHARES TRADED

	2023	2024	NET CHANGE	CHANGE (%)
Daily	8,935,647	3,045,595	-5,890,052	-65.92%
Cumulative (1/8-22/8)	47,029,093	52,091,669	5,062,576	10.76%
Cumulative (2/1-22/8)	717,230,012	562,569,398	-154,660,614	-21.56%

### NO. OF TRANSACTIONS

	2023	2024	NET CHANGE	CHANGE (%)
Daily	1,670	1,591	-79	-4.73%
Cumulative (1/8-22/8)	31,720	32,746	1,026	3.23%
Cumulative (2/1-22/8)	462,217	362,851	-99,366	-21.50%

### SOME FINANCIAL RATIOS FOR THE ASE (22/8/2024)

SECTOR	P/E	P/BV	DIVIDEND YIELD (%)	TURNOVER (%)
FINANCIAL	8.703	0.744	6.029	0.040
SERVICES	12.430	1.288	6.022	0.079
INDUSTRY	8.678	1.435	7.860	0.047
OVERALL	8.525	0.965	7.028	0.049

### STOCK PRICE INDEX WEIGHTED BY FREE FLOAT MARKET CAPITALIZATION (1999=1000)

	WEDNESDAY 21/08/2024	THURSDAY 22/08/2024	% CHANGE	
			DAY BEFORE	YTD
GENERAL	2399.6	2404.7	0.21%	-1.09%
FINANCIAL	2603.9	2610.3	0.25%	-4.35%
SERVICES	1677.3	1679.2	0.11%	2.14%
INDUSTRY	4851.9	4855.5	0.07%	2.90%

### STOCK PRICE INDEX WEIGHTED BY FREE FLOAT MARKET CAPITALIZATION ASE20 (2014=1000)

	1293.5	1296.6	0.24%	-0.94%
--	--------	--------	-------	--------

### Total Return Index ASETR (2021=1074)

	1579.8	1583.6	0.24%	6.39%
--	--------	--------	-------	-------

### STOCK PRICE INDEX WEIGHTED BY MARKET CAPITALIZATION (1991=1000)

	WEDNESDAY 21/08/2024	THURSDAY 22/08/2024	% CHANGE	
			DAY BEFORE	YTD
GENERAL	4382.7	4389.7	0.16%	-0.60%
BANKS	6394.9	6401.4	0.10%	-4.96%
INSURANCE	1335.1	1341.1	0.44%	4.37%
SERVICES	883.0	880.0	-0.34%	0.15%
INDUSTRY	5982.1	6005.7	0.39%	5.24%

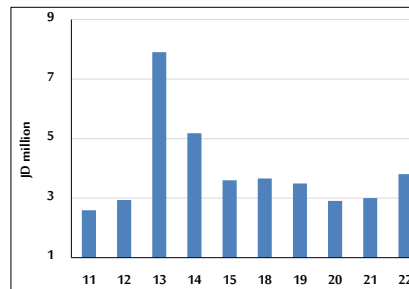
### STOCK PRICE MARKET INDEX WEIGHTED BY FREE FLOAT MARKET CAP. (2012=1000)

	WEDNESDAY 21/08/2024	THURSDAY 22/08/2024	% CHANGE	
			DAY BEFORE	YTD
FIRST MARKET	1343.7	1346.8	0.23%	-0.89%
SECOND MARKET	818.1	816.0	-0.26%	-5.59%

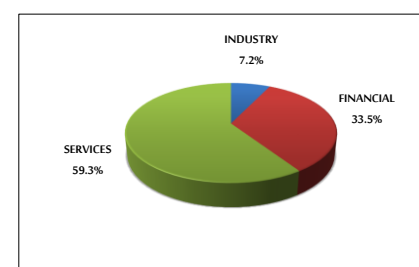
### MARKET CAPITALIZATION (JD)

	16,710,371,339	16,735,166,492	0.15%	-1.20%
--	----------------	----------------	-------	--------

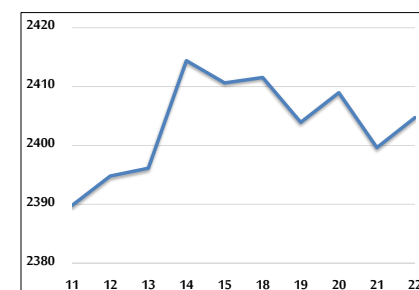
### VALUE TRADED FROM 11/8 TO 22/8/2024



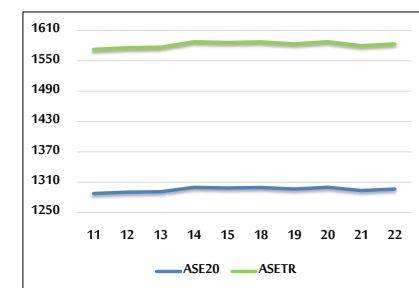
### VALUE TRADED BY SECTOR THURSDAY 22/8/2024



### GENERAL FREE FLOAT PRICE INDEX FROM 11/8 TO 22/8/2024



### ASE20 and ASETR FREE FLOAT PRICE INDEX FROM 11/8 TO 22/8/2024



### STOCK PRICE INDEX FROM 11/8 TO 22/8/2024

