

Daily Summary for Amman Stock Exchange

VALUE TRADED (JD)

	2023	2024	NET CHANGE	CHANGE (%)
Daily	3,434,833	4,104,357	669,524	19.49%
Cumulative (1/7-16/7)	57,013,197	42,697,729	-14,315,468	-25.11%
Cumulative (2/1-16/7)	920,333,916	664,919,276	-255,414,640	-27.75%

NO. OF SHARES TRADED

	2023	2024	NET CHANGE	CHANGE (%)
Daily	2,446,436	5,037,923	2,591,487	105.93%
Cumulative (1/7-16/7)	37,804,300	41,807,481	4,003,181	10.59%
Cumulative (2/1-16/7)	631,315,382	470,115,306	-161,200,076	-25.53%

NO. OF TRANSACTIONS

	2023	2024	NET CHANGE	CHANGE (%)
Daily	2,183	2,441	258	11.82%
Cumulative (1/7-16/7)	27,739	25,625	-2,114	-7.62%
Cumulative (2/1-16/7)	403,654	302,884	-100,770	-24.96%

SOME FINANCIAL RATIOS FOR THE ASE (16/7/2024)

SECTOR	P/E	P/BV	DIVIDEND YIELD (%)	TURNOVER (%)
FINANCIAL	8.608	0.742	6.045	0.051
SERVICES	12.292	1.326	5.849	0.207
INDUSTRY	8.230	1.433	7.970	0.042
OVERALL	8.354	0.965	7.036	0.082

STOCK PRICE INDEX WEIGHTED BY FREE FLOAT MARKET CAPITALIZATION (1999=1000)

	MONDAY 15/07/2024	TUESDAY 16/07/2024	% CHANGE	
			DAY BEFORE	YTD
GENERAL	2420.5	2423.7	0.13%	-0.31%
FINANCIAL	2609.7	2610.5	0.03%	-4.34%
SERVICES	1733.4	1733.3	0.00%	5.43%
INDUSTRY	4859.7	4886.1	0.54%	3.55%

STOCK PRICE INDEX WEIGHTED BY FREE FLOAT MARKET CAPITALIZATION ASE20 (2014=1000)

	1305.5	1306.9	0.11%	-0.15%
--	--------	--------	-------	--------

Total Return Index ASETR (2021=1074)

	1594.5	1596.2	0.11%	7.24%
--	--------	--------	-------	-------

STOCK PRICE INDEX WEIGHTED BY MARKET CAPITALIZATION (1991=1000)

	MONDAY 15/07/2024	TUESDAY 16/07/2024	% CHANGE	
			DAY BEFORE	YTD
GENERAL	4384.4	4389.4	0.11%	-0.61%
BANKS	6397.8	6382.9	-0.23%	-5.24%
INSURANCE	1355.0	1356.5	0.12%	5.57%
SERVICES	903.6	904.0	0.04%	2.89%
INDUSTRY	5940.3	5975.2	0.59%	4.71%

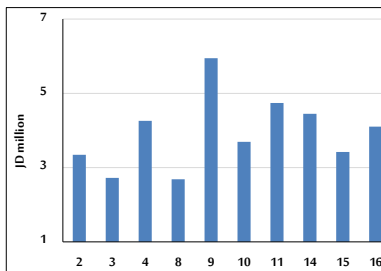
STOCK PRICE MARKET INDEX WEIGHTED BY FREE FLOAT MARKET CAP. (2012=1000)

	MONDAY 15/07/2024	TUESDAY 16/07/2024	% CHANGE	
			DAY BEFORE	YTD
FIRST MARKET	1355.8	1356.9	0.09%	-0.15%
SECOND MARKET	825.8	832.5	0.81%	-3.67%

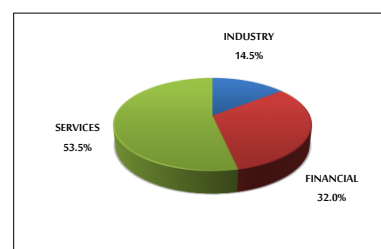
MARKET CAPITALIZATION (JD)

	16,697,609,297	16,711,907,524	0.09%	-1.34%
--	----------------	----------------	-------	--------

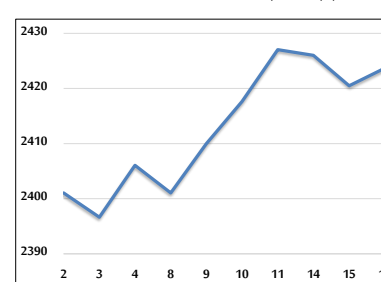
VALUE TRADED FROM 2/7 TO 16/7/2024



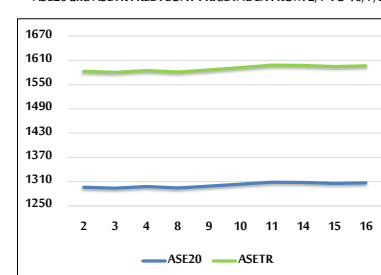
VALUE TRADED BY SECTOR TUESDAY 16/7/2024



GENERAL FREE FLOAT PRICE INDEX FROM 2/7 TO 16/7/2024



ASE20 and ASETR FREE FLOAT PRICE INDEX FROM 2/7 TO 16/7/2024



STOCK PRICE INDEX FROM 2/7 TO 16/7/2024

