

Daily Summary for Amman Stock Exchange

VALUE TRADED (JD)

	2023	2024	NET CHANGE	CHANGE (%)
Daily	6,582,285	2,685,361	-3,896,924	-59.20%
Cumulative (1/7-8/7)	26,593,131	16,344,883	-10,248,248	-38.54%
Cumulative (2/1-8/7)	889,913,850	638,566,430	-251,347,420	-28.24%

NO. OF SHARES TRADED

	2023	2024	NET CHANGE	CHANGE (%)
Daily	4,211,563	3,150,748	-1,060,815	-25.19%
Cumulative (1/7-8/7)	17,818,091	17,429,346	-388,745	-2.18%
Cumulative (2/1-8/7)	611,329,173	445,737,171	-165,592,002	-27.09%

NO. OF TRANSACTIONS

	2023	2024	NET CHANGE	CHANGE (%)
Daily	3,187	2,006	-1,181	-37.06%
Cumulative (1/7-8/7)	13,744	10,650	-3,094	-22.51%
Cumulative (2/1-8/7)	389,659	287,909	-101,750	-26.11%

SOME FINANCIAL RATIOS FOR THE ASE (8/7/2024)

SECTOR	P/E	P/BV	DIVIDEND YIELD (%)	TURNOVER (%)
FINANCIAL	8.537	0.739	6.076	0.034
SERVICES	12.206	1.317	5.890	0.121
INDUSTRY	8.043	1.400	8.155	0.028
OVERALL	8.255	0.953	7.121	0.051

STOCK PRICE INDEX WEIGHTED BY FREE FLOAT MARKET CAPITALIZATION (1999=1000)

	THURSDAY 04/07/2024	MONDAY 08/07/2024	% CHANGE	
			DAY BEFORE	YTD
GENERAL	2406.1	2401.0	-0.21%	-1.24%
FINANCIAL	2607.4	2598.5	-0.34%	-4.78%
SERVICES	1712.8	1715.0	0.13%	4.32%
INDUSTRY	4795.2	4790.0	-0.11%	1.51%

STOCK PRICE INDEX WEIGHTED BY FREE FLOAT MARKET CAPITALIZATION ASE20 (2014=1000)

	1297.7	1294.5	-0.25%	-1.10%
--	--------	--------	--------	--------

Total Return Index ASETR (2021=1074)

	1585.0	1581.0	-0.25%	6.22%
--	--------	--------	--------	-------

STOCK PRICE INDEX WEIGHTED BY MARKET CAPITALIZATION (1991=1000)

	THURSDAY 04/07/2024	MONDAY 08/07/2024	% CHANGE	
			DAY BEFORE	YTD
GENERAL	4347.0	4337.2	-0.22%	-1.79%
BANKS	6373.7	6354.4	-0.30%	-5.66%
INSURANCE	1348.4	1342.4	-0.45%	4.47%
SERVICES	898.4	897.6	-0.09%	2.16%
INDUSTRY	5847.7	5838.2	-0.16%	2.30%

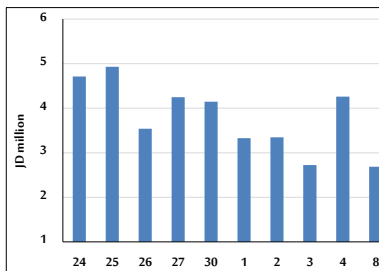
STOCK PRICE MARKET INDEX WEIGHTED BY FREE FLOAT MARKET CAP. (2012=1000)

	THURSDAY 04/07/2024	MONDAY 08/07/2024	% CHANGE	
			DAY BEFORE	YTD
FIRST MARKET	1348.0	1344.9	-0.23%	-1.03%
SECOND MARKET	822.2	822.5	0.03%	-4.84%

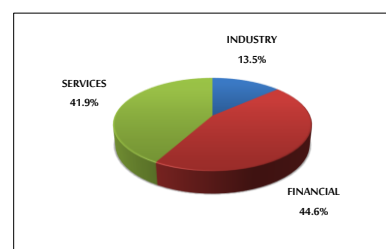
MARKET CAPITALIZATION (JD)

	16,562,048,391	16,528,266,666	-0.20%	-2.43%
--	----------------	----------------	--------	--------

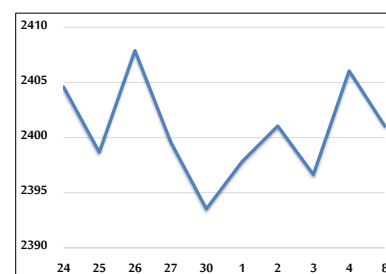
VALUE TRADED FROM 24/6 TO 8/7/2024



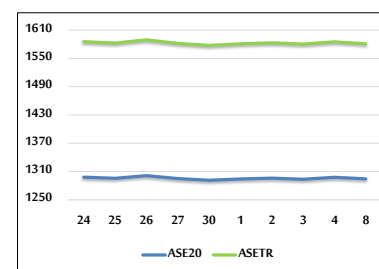
VALUE TRADED BY SECTOR MONDAY 8/7/2024



GENERAL FREE FLOAT PRICE INDEX FROM 24/6 TO 8/7/2024



ASE20 and ASETR FREE FLOAT PRICE INDEX FROM 24/6 TO 8/7/2024



STOCK PRICE INDEX FROM 24/6 TO 8/7/2024

