

## Daily Summary for Amman Stock Exchange

### VALUE TRADED (JD)

	2023	2024	NET CHANGE	CHANGE (%)
Daily	6,034,424	4,260,560	-1,773,864	-29.40%
Cumulative (1/7-4/7)	20,010,846	13,659,522	-6,351,324	-31.74%
Cumulative (2/1-4/7)	883,331,565	635,881,069	-247,450,496	-28.01%

### NO. OF SHARES TRADED

	2023	2024	NET CHANGE	CHANGE (%)
Daily	4,614,898	4,284,863	-330,035	-7.15%
Cumulative (1/7-4/7)	13,606,528	14,278,598	672,070	4.94%
Cumulative (2/1-4/7)	607,117,610	442,586,423	-164,531,187	-27.10%

### NO. OF TRANSACTIONS

	2023	2024	NET CHANGE	CHANGE (%)
Daily	3,195	2,509	-686	-21.47%
Cumulative (1/7-4/7)	10,557	8,644	-1,913	-18.12%
Cumulative (2/1-4/7)	386,472	285,903	-100,569	-26.02%

### SOME FINANCIAL RATIOS FOR THE ASE (4/7/2024)

SECTOR	P/E	P/BV	DIVIDEND YIELD (%)	TURNOVER (%)
FINANCIAL	8.563	0.742	6.057	0.042
SERVICES	12.184	1.314	5.901	0.181
INDUSTRY	8.062	1.403	8.137	0.031
OVERALL	8.273	0.955	7.105	0.069

### STOCK PRICE INDEX WEIGHTED BY FREE FLOAT MARKET CAPITALIZATION (1999=1000)

	WEDNESDAY 03/07/2024	THURSDAY 04/07/2024	% CHANGE	
			DAY BEFORE	YTD
GENERAL	2396.6	2406.1	0.39%	-1.03%
FINANCIAL	2601.2	2607.4	0.24%	-4.45%
SERVICES	1699.4	1712.8	0.79%	4.18%
INDUSTRY	4789.0	4795.2	0.13%	1.62%

### STOCK PRICE INDEX WEIGHTED BY FREE FLOAT MARKET CAPITALIZATION ASE20 (2014=1000)

	1293.8	1297.7	0.30%	-0.85%
--	--------	--------	-------	--------

### Total Return Index ASETR (2021=1074)

	1580.2	1585.0	0.30%	6.49%
--	--------	--------	-------	-------

### STOCK PRICE INDEX WEIGHTED BY MARKET CAPITALIZATION (1991=1000)

	WEDNESDAY 03/07/2024	THURSDAY 04/07/2024	% CHANGE	
			DAY BEFORE	YTD
GENERAL	4337.5	4347.0	0.22%	-1.57%
BANKS	6355.8	6373.7	0.28%	-5.37%
INSURANCE	1348.7	1348.4	-0.02%	4.94%
SERVICES	898.8	898.4	-0.04%	2.25%
INDUSTRY	5835.1	5847.7	0.22%	2.47%

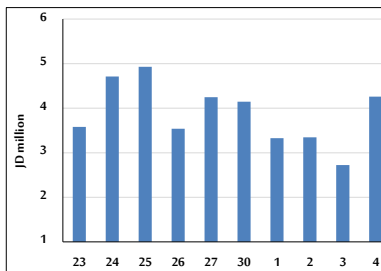
### STOCK PRICE MARKET INDEX WEIGHTED BY FREE FLOAT MARKET CAP. (2012=1000)

	WEDNESDAY 03/07/2024	THURSDAY 04/07/2024	% CHANGE	
			DAY BEFORE	YTD
FIRST MARKET	1342.9	1348.0	0.38%	-0.81%
SECOND MARKET	818.4	822.2	0.47%	-4.86%

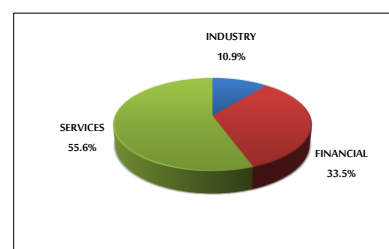
### MARKET CAPITALIZATION (JD)

	16,532,769,506	16,562,048,391	0.18%	-2.23%
--	----------------	----------------	-------	--------

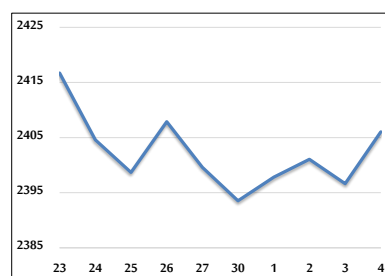
### VALUE TRADED FROM 23/6 TO 4/7/2024



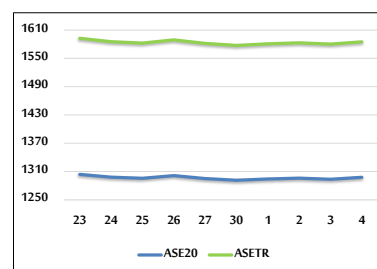
### VALUE TRADED BY SECTOR THURSDAY 4/7/2024



### GENERAL FREE FLOAT PRICE INDEX FROM 23/6 TO 4/7/2024



### ASE20 and ASETR FREE FLOAT PRICE INDEX FROM 23/6 TO 4/7/2024



### STOCK PRICE INDEX FROM 23/6 TO 4/7/2024

