

Daily Summary for Amman Stock Exchange

VALUE TRADED (JD)

	2023	2024	NET CHANGE	CHANGE (%)
Daily	6,023,130	2,724,517	-3,298,613	-54.77%
Cumulative (1/7-3/7)	13,976,422	9,398,962	-4,577,460	-32.75%
Cumulative (2/1-3/7)	877,297,141	631,620,509	-245,676,632	-28.00%

NO. OF SHARES TRADED

	2023	2024	NET CHANGE	CHANGE (%)
Daily	3,485,144	2,744,681	-740,463	-21.25%
Cumulative (1/7-3/7)	8,991,630	9,993,735	1,002,105	11.14%
Cumulative (2/1-3/7)	602,502,712	438,301,560	-164,201,152	-27.25%

NO. OF TRANSACTIONS

	2023	2024	NET CHANGE	CHANGE (%)
Daily	2,999	1,960	-1,039	-34.64%
Cumulative (1/7-3/7)	7,362	6,135	-1,227	-16.67%
Cumulative (2/1-3/7)	383,277	283,394	-99,883	-26.06%

SOME FINANCIAL RATIOS FOR THE ASE (3/7/2024)

SECTOR	P/E	P/BV	DIVIDEND YIELD (%)	TURNOVER (%)
FINANCIAL	8.541	0.740	6.074	0.033
SERVICES	12.156	1.311	5.914	0.099
INDUSTRY	8.060	1.403	8.138	0.012
OVERALL	8.255	0.953	7.120	0.044

STOCK PRICE INDEX WEIGHTED BY FREE FLOAT MARKET CAPITALIZATION (1999=1000)

	TUESDAY 02/07/2024	WEDNESDAY 03/07/2024	% CHANGE	
			DAY BEFORE	YTD
GENERAL	2401.1	2396.6	-0.18%	-1.42%
FINANCIAL	2604.0	2601.2	-0.11%	-4.68%
SERVICES	1705.3	1699.4	-0.34%	3.37%
INDUSTRY	4798.2	4789.0	-0.19%	1.49%

STOCK PRICE INDEX WEIGHTED BY FREE FLOAT MARKET CAPITALIZATION ASE20 (2014=1000)

	1296.0	1293.8	-0.17%	-1.15%
--	--------	--------	--------	--------

Total Return Index ASETR (2021=1074)

	1583.0	1580.2	-0.17%	6.16%
--	--------	--------	--------	-------

STOCK PRICE INDEX WEIGHTED BY MARKET CAPITALIZATION (1991=1000)

	TUESDAY 02/07/2024	WEDNESDAY 03/07/2024	% CHANGE	
			DAY BEFORE	YTD
GENERAL	4344.8	4337.5	-0.17%	-1.78%
BANKS	6365.5	6355.8	-0.15%	-5.64%
INSURANCE	1352.0	1348.7	-0.25%	4.96%
SERVICES	900.5	898.8	-0.19%	2.29%
INDUSTRY	5845.5	5835.1	-0.18%	2.25%

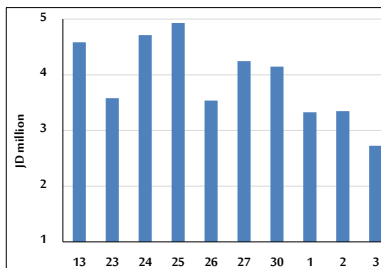
STOCK PRICE MARKET INDEX WEIGHTED BY FREE FLOAT MARKET CAP. (2012=1000)

	TUESDAY 02/07/2024	WEDNESDAY 03/07/2024	% CHANGE	
			DAY BEFORE	YTD
FIRST MARKET	1345.4	1342.9	-0.19%	-1.18%
SECOND MARKET	815.8	818.4	0.31%	-5.31%

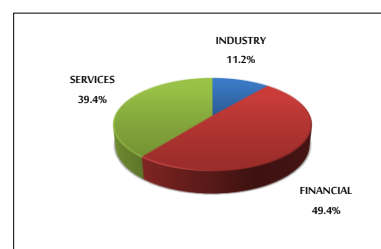
MARKET CAPITALIZATION (JD)

	16,560,347,882	16,532,769,506	-0.17%	-2.40%
--	----------------	----------------	--------	--------

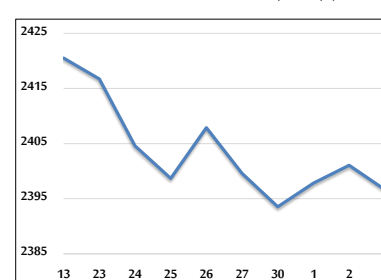
VALUE TRADED FROM 13/6 TO 3/7/2024



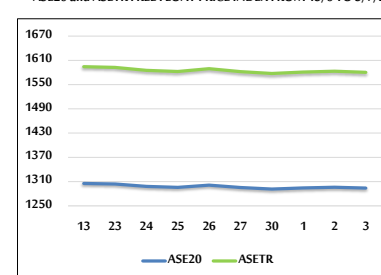
VALUE TRADED BY SECTOR WEDNESDAY 3/7/2024



GENERAL FREE FLOAT PRICE INDEX FROM 13/6 TO 3/7/2024



ASE20 and ASETR FREE FLOAT PRICE INDEX FROM 13/6 TO 3/7/2024



STOCK PRICE INDEX FROM 13/6 TO 3/7/2024

