

### Daily Summary for Amman Stock Exchange

VALUE TRADED (JD)

	2023	2024	NET CHANGE	CHANGE (%)
Daily	5,135,935	3,346,978	-1,788,957	-34.83%
Cumulative (1/7-2/7)	7,953,292	6,674,445	-1,278,847	-16.08%
Cumulative (2/1-2/7)	871,274,011	628,895,992	-242,378,019	-27.82%

NO. OF SHARES TRADED

	2023	2024	NET CHANGE	CHANGE (%)
Daily	3,137,643	3,790,947	653,304	20.82%
Cumulative (1/7-2/7)	5,506,486	7,249,054	1,742,568	31.65%
Cumulative (2/1-2/7)	599,017,568	435,556,879	-163,460,689	-27.29%

NO. OF TRANSACTIONS

	2023	2024	NET CHANGE	CHANGE (%)
Daily	2,681	2,006	-675	-25.18%
Cumulative (1/7-2/7)	4,363	4,175	-188	-4.31%
Cumulative (2/1-2/7)	380,278	281,434	-98,844	-25.99%

SOME FINANCIAL RATIOS FOR THE ASE (2/7/2024)

SECTOR	P/E	P/BV	DIVIDEND YIELD (%)	TURNOVER (%)
FINANCIAL	8.553	0.741	6.064	0.049
SERVICES	12.188	1.315	5.899	0.116
INDUSTRY	8.072	1.405	8.126	0.038
OVERALL	8.269	0.955	7.108	0.061

STOCK PRICE INDEX WEIGHTED BY FREE FLOAT MARKET CAPITALIZATION (1999=1000)

	MONDAY 01/07/2024	TUESDAY 02/07/2024	% CHANGE	
			DAY BEFORE	YTD
GENERAL	2397.8	2401.1	0.14%	-1.24%
FINANCIAL	2602.0	2604.0	0.08%	-4.58%
SERVICES	1703.5	1705.3	0.11%	3.73%
INDUSTRY	4787.9	4798.2	0.21%	1.69%

STOCK PRICE INDEX WEIGHTED BY FREE FLOAT MARKET CAPITALIZATION ASE20 (2014=1000)

	1294.3	1296.0	0.13%	-0.98%
--	--------	--------	-------	--------

Total Return Index ASETR (2021=1074)

	1580.9	1583.0	0.13%	6.35%
--	--------	--------	-------	-------

STOCK PRICE INDEX WEIGHTED BY MARKET CAPITALIZATION (1991=1000)

	MONDAY 01/07/2024	TUESDAY 02/07/2024	% CHANGE	
			DAY BEFORE	YTD
GENERAL	4342.0	4344.8	0.06%	-1.62%
BANKS	6367.8	6365.5	-0.04%	-5.50%
INSURANCE	1351.2	1352.0	0.06%	5.22%
SERVICES	898.6	900.5	0.21%	2.49%
INDUSTRY	5836.9	5845.5	0.15%	2.43%

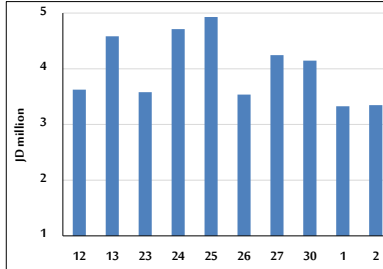
STOCK PRICE MARKET INDEX WEIGHTED BY FREE FLOAT MARKET CAP. (2012=1000)

	MONDAY 01/07/2024	TUESDAY 02/07/2024	% CHANGE	
			DAY BEFORE	YTD
FIRST MARKET	1344.0	1345.4	0.11%	-1.00%
SECOND MARKET	812.0	815.8	0.47%	-5.60%

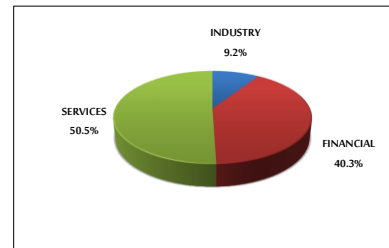
MARKET CAPITALIZATION (JD)

	16,552,325,372	16,560,347,882	0.05%	-2.24%
--	----------------	----------------	-------	--------

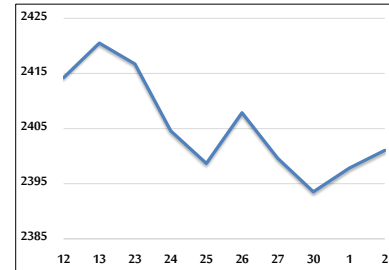
VALUE TRADED FROM 12/6 TO 2/7/2024



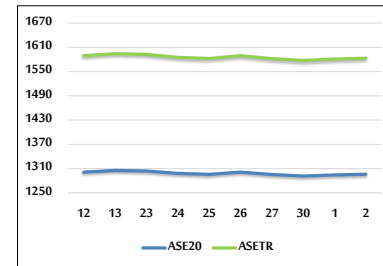
VALUE TRADED BY SECTOR TUESDAY 2/7/2024



GENERAL FREE FLOAT PRICE INDEX FROM 12/6 TO 2/7/2024



ASE20 and ASETR FREE FLOAT PRICE INDEX FROM 12/6 TO 2/7/2024



STOCK PRICE INDEX FROM 12/6 TO 2/7/2024

