

## Daily Summary for Amman Stock Exchange

### VALUE TRADED (JD)

	2023	2024	NET CHANGE	CHANGE (%)
Daily	2,817,357	3,327,467	510,110	18.11%
Cumulative (1/7-1/7)	2,817,357	3,327,467	510,110	18.11%
Cumulative (2/1-1/7)	866,138,076	625,549,014	-240,589,062	-27.78%

### NO. OF SHARES TRADED

	2023	2024	NET CHANGE	CHANGE (%)
Daily	2,368,843	3,458,107	1,089,264	45.98%
Cumulative (1/7-1/7)	2,368,843	3,458,107	1,089,264	45.98%
Cumulative (2/1-1/7)	595,879,925	431,765,932	-164,113,993	-27.54%

### NO. OF TRANSACTIONS

	2023	2024	NET CHANGE	CHANGE (%)
Daily	1,682	2,169	487	28.95%
Cumulative (1/7-1/7)	1,682	2,169	487	28.95%
Cumulative (2/1-1/7)	377,597	279,428	-98,169	-26.00%

### SOME FINANCIAL RATIOS FOR THE ASE (1/7/2024)

SECTOR	P/E	P/BV	DIVIDEND YIELD (%)	TURNOVER (%)
FINANCIAL	8.556	0.741	6.063	0.036
SERVICES	12.184	1.314	5.901	0.138
INDUSTRY	8.058	1.403	8.140	0.027
OVERALL	8.264	0.954	7.113	0.056

### STOCK PRICE INDEX WEIGHTED BY FREE FLOAT MARKET CAPITALIZATION (1999=1000)

	SUNDAY 30/06/2024	MONDAY 01/07/2024	% CHANGE	
			DAY BEFORE	YTD
GENERAL	2393.5	2397.8	0.18%	-1.37%
FINANCIAL	2602.6	2602.0	-0.02%	-4.65%
SERVICES	1697.4	1703.5	0.36%	3.62%
INDUSTRY	4770.3	4787.9	0.37%	1.47%

### STOCK PRICE INDEX WEIGHTED BY FREE FLOAT MARKET CAPITALIZATION ASE20 (2014=1000)

	1291.6	1294.3	0.21%	-1.11%
--	--------	--------	-------	--------

### Total Return Index ASETR (2021=1074)

	1577.5	1580.9	0.21%	6.21%
--	--------	--------	-------	-------

### STOCK PRICE INDEX WEIGHTED BY MARKET CAPITALIZATION (1991=1000)

	SUNDAY 30/06/2024	MONDAY 01/07/2024	% CHANGE	
			DAY BEFORE	YTD
GENERAL	4334.7	4342.0	0.17%	-1.68%
BANKS	6371.6	6367.8	-0.06%	-5.46%
INSURANCE	1355.0	1351.2	-0.28%	5.16%
SERVICES	897.9	898.6	0.08%	2.27%
INDUSTRY	5806.9	5836.9	0.52%	2.28%

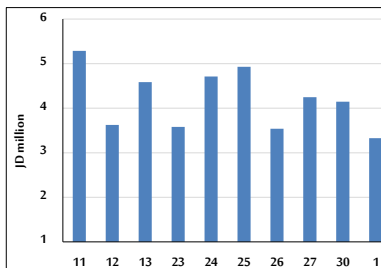
### STOCK PRICE MARKET INDEX WEIGHTED BY FREE FLOAT MARKET CAP. (2012=1000)

	SUNDAY 30/06/2024	MONDAY 01/07/2024	% CHANGE	
			DAY BEFORE	YTD
FIRST MARKET	1341.1	1344.0	0.21%	-1.10%
SECOND MARKET	814.6	812.0	-0.32%	-6.04%

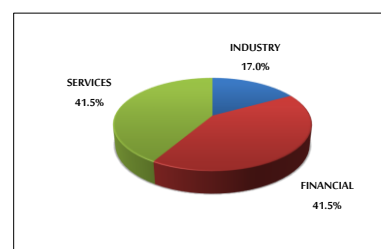
### MARKET CAPITALIZATION (JD)

	16,531,023,000	16,552,325,372	0.13%	-2.28%
--	----------------	----------------	-------	--------

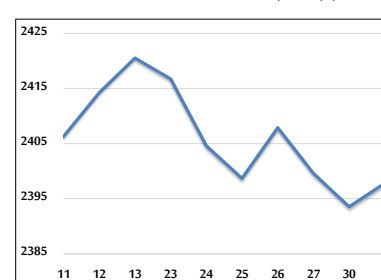
### VALUE TRADED FROM 11/6 TO 1/7/2024



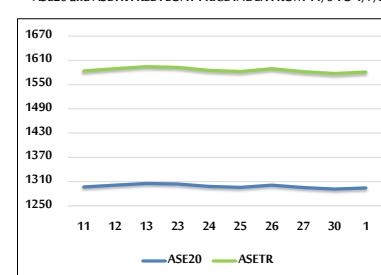
### VALUE TRADED BY SECTOR MONDAY 1/7/2024



### GENERAL FREE FLOAT PRICE INDEX FROM 11/6 TO 1/7/2024



### ASE20 and ASETR FREE FLOAT PRICE INDEX FROM 11/6 TO 1/7/2024



### STOCK PRICE INDEX FROM 11/6 TO 1/7/2024

