

Daily Summary for Amman Stock Exchange

VALUE TRADED (JD)

	2023	2024	NET CHANGE	CHANGE (%)
Daily	5,581,505	4,712,300	-869,205	-15.57%
Cumulative (2/6-24/6)	61,591,585	48,586,668	-13,004,917	-21.11%
Cumulative (2/1-24/6)	822,879,387	605,363,186	-217,516,201	-26.43%

NO. OF SHARES TRADED

	2023	2024	NET CHANGE	CHANGE (%)
Daily	4,451,211	3,228,399	-1,222,812	-27.47%
Cumulative (2/6-24/6)	51,859,813	34,606,320	-17,253,493	-33.27%
Cumulative (2/1-24/6)	560,212,830	411,142,879	-149,069,951	-26.61%

NO. OF TRANSACTIONS

	2023	2024	NET CHANGE	CHANGE (%)
Daily	2,591	1,960	-631	-24.35%
Cumulative (2/6-24/6)	34,546	26,199	-8,347	-24.16%
Cumulative (2/1-24/6)	358,855	268,759	-90,096	-25.11%

SOME FINANCIAL RATIOS FOR THE ASE (24/6/2024)

SECTOR	P/E	P/BV	DIVIDEND YIELD (%)	TURNOVER (%)
FINANCIAL	8.599	0.745	6.007	0.024
SERVICES	12.122	1.308	5.931	0.148
INDUSTRY	8.070	1.405	8.128	0.046
OVERALL	8.292	0.956	7.097	0.052

STOCK PRICE INDEX WEIGHTED BY FREE FLOAT MARKET CAPITALIZATION (1999=1000)

	SUNDAY 23/06/2024	MONDAY 24/06/2024	% CHANGE	
			DAY BEFORE	YTD
GENERAL	2416.7	2404.6	-0.50%	-1.09%
FINANCIAL	2621.1	2613.8	-0.28%	-4.22%
SERVICES	1706.7	1692.2	-0.85%	2.93%
INDUSTRY	4854.2	4823.1	-0.64%	2.21%

STOCK PRICE INDEX WEIGHTED BY FREE FLOAT MARKET CAPITALIZATION ASE20 (2014=1000)

	1304.0	1298.0	-0.46%	-0.83%
--	--------	--------	--------	--------

Total Return Index ASETR (2021=1074)

	1592.6	1585.4	-0.46%	6.51%
--	--------	--------	--------	-------

STOCK PRICE INDEX WEIGHTED BY MARKET CAPITALIZATION (1991=1000)

	SUNDAY 23/06/2024	MONDAY 24/06/2024	% CHANGE	
			DAY BEFORE	YTD
GENERAL	4378.2	4358.3	-0.46%	-1.31%
BANKS	6417.4	6408.0	-0.15%	-4.86%
INSURANCE	1352.8	1352.8	0.00%	5.28%
SERVICES	902.7	896.6	-0.68%	2.04%
INDUSTRY	5895.7	5849.0	-0.79%	2.49%

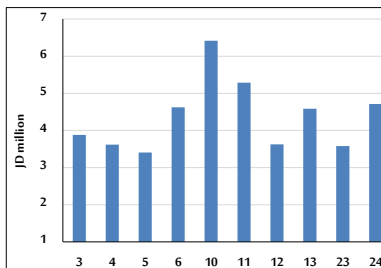
STOCK PRICE MARKET INDEX WEIGHTED BY FREE FLOAT MARKET CAP. (2012=1000)

	SUNDAY 23/06/2024	MONDAY 24/06/2024	% CHANGE	
			DAY BEFORE	YTD
FIRST MARKET	1353.0	1346.8	-0.45%	-0.89%
SECOND MARKET	824.8	816.3	-1.03%	-5.55%

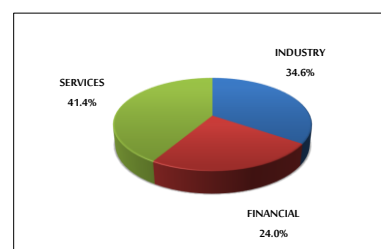
MARKET CAPITALIZATION (JD)

	16,671,299,876	16,599,060,057	-0.43%	-2.01%
--	----------------	----------------	--------	--------

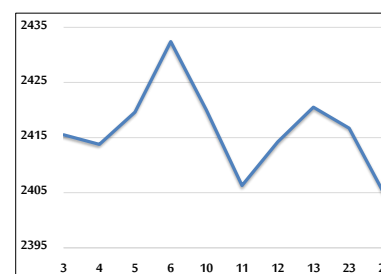
VALUE TRADED FROM 3/6 TO 24/6/2024



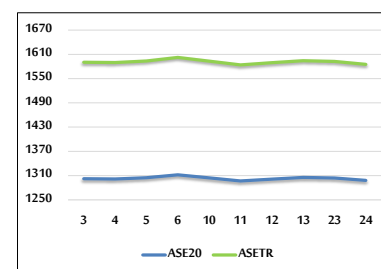
VALUE TRADED BY SECTOR MONDAY 24/6/2024



GENERAL FREE FLOAT PRICE INDEX FROM 3/6 TO 24/6/2024



ASE20 and ASETR FREE FLOAT PRICE INDEX FROM 3/6 TO 24/6/2024



STOCK PRICE INDEX FROM 3/6 TO 24/6/2024

