

## Daily Summary for Amman Stock Exchange

### VALUE TRADED (JD)

	2023	2024	NET CHANGE	CHANGE (%)
Daily	7,718,450	6,416,687	-1,301,763	-16.87%
Cumulative (2/6-10/6)	34,158,929	26,801,844	-7,357,085	-21.54%
Cumulative (2/1-10/6)	795,446,731	583,578,362	-211,868,369	-26.64%

### NO. OF SHARES TRADED

	2023	2024	NET CHANGE	CHANGE (%)
Daily	5,914,104	2,826,674	-3,087,430	-52.20%
Cumulative (2/6-10/6)	25,920,224	19,030,495	-6,889,729	-26.58%
Cumulative (2/1-10/6)	534,273,241	395,567,054	-138,706,187	-25.96%

### NO. OF TRANSACTIONS

	2023	2024	NET CHANGE	CHANGE (%)
Daily	3,623	2,427	-1,196	-33.01%
Cumulative (2/6-10/6)	19,766	15,805	-3,961	-20.04%
Cumulative (2/1-10/6)	344,075	258,365	-85,710	-24.91%

### SOME FINANCIAL RATIOS FOR THE ASE (10/6/2024)

SECTOR	P/E	P/BV	DIVIDEND YIELD (%)	TURNOVER (%)
FINANCIAL	8.670	0.752	5.958	0.036
SERVICES	12.162	1.312	5.911	0.069
INDUSTRY	8.119	1.413	8.079	0.060
OVERALL	8.349	0.963	7.048	0.046

### STOCK PRICE INDEX WEIGHTED BY FREE FLOAT MARKET CAPITALIZATION (1999=1000)

	THURSDAY 06/06/2024	MONDAY 10/06/2024	% CHANGE	
			DAY BEFORE	YTD
GENERAL	2432.4	2420.0	-0.51%	-0.46%
FINANCIAL	2641.5	2632.5	-0.34%	-3.54%
SERVICES	1717.8	1702.9	-0.87%	3.58%
INDUSTRY	4884.0	4864.6	-0.40%	3.09%

### STOCK PRICE INDEX WEIGHTED BY FREE FLOAT MARKET CAPITALIZATION ASE20 (2014=1000)

	1311.9	1304.4	-0.57%	-0.34%
--	--------	--------	--------	--------

### Total Return Index ASETR (2021=1074)

	1602.4	1593.2	-0.57%	7.04%
--	--------	--------	--------	-------

### STOCK PRICE INDEX WEIGHTED BY MARKET CAPITALIZATION (1991=1000)

	THURSDAY 06/06/2024	MONDAY 10/06/2024	% CHANGE	
			DAY BEFORE	YTD
GENERAL	4415.6	4388.6	-0.61%	-0.63%
BANKS	6493.8	6460.9	-0.51%	-4.08%
INSURANCE	1356.9	1354.5	-0.17%	5.42%
SERVICES	899.7	895.2	-0.50%	1.88%
INDUSTRY	5942.4	5896.1	-0.78%	3.32%

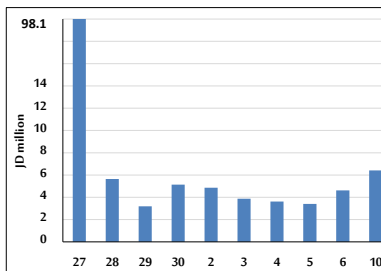
### STOCK PRICE MARKET INDEX WEIGHTED BY FREE FLOAT MARKET CAP. (2012=1000)

	THURSDAY 06/06/2024	MONDAY 10/06/2024	% CHANGE	
			DAY BEFORE	YTD
FIRST MARKET	1361.2	1353.9	-0.53%	-0.37%
SECOND MARKET	849.6	843.5	-0.72%	-2.40%

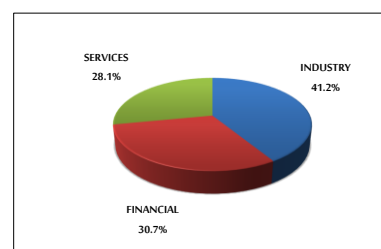
### MARKET CAPITALIZATION (JD)

	16,804,733,691	16,709,986,620	-0.56%	-1.35%
--	----------------	----------------	--------	--------

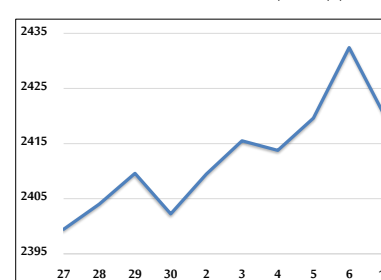
### VALUE TRADED FROM 27/5 TO 10/6/2024



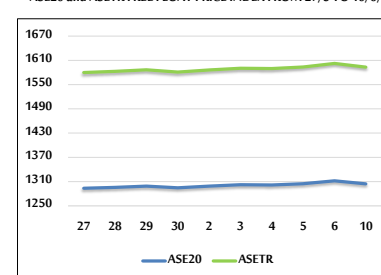
### VALUE TRADED BY SECTOR MONDAY 10/6/2024



### GENERAL FREE FLOAT PRICE INDEX FROM 27/5 TO 10/6/2024



### ASE20 and ASETR FREE FLOAT PRICE INDEX FROM 27/5 TO 10/6/2024



### STOCK PRICE INDEX FROM 27/5 TO 10/6/2024

