

Daily Summary for Amman Stock Exchange

VALUE TRADED (JD)

	2023	2024	NET CHANGE	CHANGE (%)
Daily	5,555,586	4,146,984	-1,408,602	-25.35%
Cumulative (2/6-30/6)	102,032,917	65,445,029	-36,587,888	-35.86%
Cumulative (2/1-30/6)	863,320,719	622,221,547	-241,099,172	-27.93%

NO. OF SHARES TRADED

	2023	2024	NET CHANGE	CHANGE (%)
Daily	4,444,081	4,462,072	17,991	0.40%
Cumulative (2/6-30/6)	85,158,065	51,771,266	-33,386,799	-39.21%
Cumulative (2/1-30/6)	593,511,082	428,307,825	-165,203,257	-27.83%

NO. OF TRANSACTIONS

	2023	2024	NET CHANGE	CHANGE (%)
Daily	2,760	2,193	-567	-20.54%
Cumulative (2/6-30/6)	51,606	34,699	-16,907	-32.76%
Cumulative (2/1-30/6)	375,915	277,259	-98,656	-26.24%

SOME FINANCIAL RATIOS FOR THE ASE (30/6/2024)

SECTOR	P/E	P/BV	DIVIDEND YIELD (%)	TURNOVER (%)
FINANCIAL	8.553	0.742	6.057	0.044
SERVICES	12.154	1.311	5.915	0.190
INDUSTRY	8.026	1.397	8.173	0.028
OVERALL	8.247	0.951	7.135	0.072

STOCK PRICE INDEX WEIGHTED BY FREE FLOAT MARKET CAPITALIZATION (1999=1000)

	THURSDAY 27/06/2024	SUNDAY 30/06/2024	% CHANGE	
			DAY BEFORE	YTD
GENERAL	2399.6	2393.5	-0.25%	-1.55%
FINANCIAL	2605.5	2602.6	-0.11%	-4.63%
SERVICES	1704.7	1697.4	-0.43%	3.25%
INDUSTRY	4785.5	4770.3	-0.32%	1.09%

STOCK PRICE INDEX WEIGHTED BY FREE FLOAT MARKET CAPITALIZATION ASE20 (2014=1000)

	1295.2	1291.6	-0.28%	-1.32%
--	--------	--------	--------	--------

Total Return Index ASETR (2021=1074)

	1581.9	1577.5	-0.28%	5.98%
--	--------	--------	--------	-------

STOCK PRICE INDEX WEIGHTED BY MARKET CAPITALIZATION (1991=1000)

	THURSDAY 27/06/2024	SUNDAY 30/06/2024	% CHANGE	
			DAY BEFORE	YTD
GENERAL	4349.3	4334.7	-0.34%	-1.85%
BANKS	6397.8	6371.6	-0.41%	-5.41%
INSURANCE	1349.6	1355.0	0.40%	5.45%
SERVICES	899.7	897.9	-0.21%	2.19%
INDUSTRY	5822.9	5806.9	-0.27%	1.76%

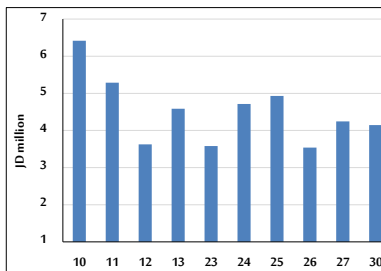
STOCK PRICE MARKET INDEX WEIGHTED BY FREE FLOAT MARKET CAP. (2012=1000)

	THURSDAY 27/06/2024	SUNDAY 30/06/2024	% CHANGE	
			DAY BEFORE	YTD
FIRST MARKET	1345.0	1341.1	-0.28%	-1.31%
SECOND MARKET	814.6	814.6	0.00%	-5.75%

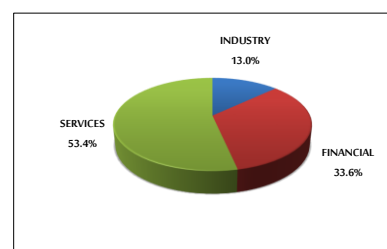
MARKET CAPITALIZATION (JD)

	16,581,846,139	16,531,023,000	-0.31%	-2.41%
--	----------------	----------------	--------	--------

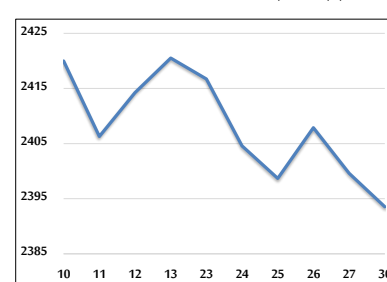
VALUE TRADED FROM 10/6 TO 30/6/2024



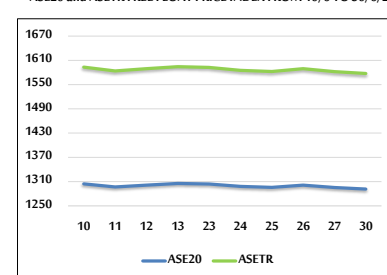
VALUE TRADED BY SECTOR SUNDAY 30/6/2024



GENERAL FREE FLOAT PRICE INDEX FROM 10/6 TO 30/6/2024



ASE20 and ASETR FREE FLOAT PRICE INDEX FROM 10/6 TO 30/6/2024



STOCK PRICE INDEX FROM 10/6 TO 30/6/2024

