

Daily Summary for Amman Stock Exchange

VALUE TRADED (JD)

	2023	2024	NET CHANGE	CHANGE (%)
Daily	5,334,463	3,537,640	-1,796,823	-33.68%
Cumulative (2/6-26/6)	80,124,202	57,052,569	-23,071,633	-28.79%
Cumulative (2/1-26/6)	841,412,004	613,829,087	-227,582,917	-27.05%

NO. OF SHARES TRADED

	2023	2024	NET CHANGE	CHANGE (%)
Daily	5,528,846	2,999,363	-2,529,483	-45.75%
Cumulative (2/6-26/6)	66,366,852	43,680,021	-22,686,831	-34.18%
Cumulative (2/1-26/6)	574,719,869	420,216,580	-154,503,289	-26.88%

NO. OF TRANSACTIONS

	2023	2024	NET CHANGE	CHANGE (%)
Daily	2,707	2,098	-609	-22.50%
Cumulative (2/6-26/6)	40,335	30,455	-9,880	-24.49%
Cumulative (2/1-26/6)	364,644	273,015	-91,629	-25.13%

SOME FINANCIAL RATIOS FOR THE ASE (26/6/2024)

SECTOR	P/E	P/BV	DIVIDEND YIELD (%)	TURNOVER (%)
FINANCIAL	8.603	0.746	6.004	0.029
SERVICES	12.165	1.312	5.910	0.106
INDUSTRY	8.118	1.413	8.080	0.063
OVERALL	8.309	0.958	7.082	0.048

STOCK PRICE INDEX WEIGHTED BY FREE FLOAT MARKET CAPITALIZATION (1999=1000)

	TUESDAY 25/06/2024	WEDNESDAY 26/06/2024	% CHANGE	
			DAY BEFORE	YTD
GENERAL	2398.7	2407.9	0.38%	-0.96%
FINANCIAL	2610.1	2615.1	0.19%	-4.17%
SERVICES	1687.7	1703.7	0.95%	3.63%
INDUSTRY	4799.0	4813.1	0.30%	2.00%

STOCK PRICE INDEX WEIGHTED BY FREE FLOAT MARKET CAPITALIZATION ASE20 (2014=1000)

	1295.7	1301.3	0.43%	-0.58%
--	--------	--------	-------	--------

Total Return Index ASETR (2021=1074)

	1582.5	1589.4	0.43%	6.78%
--	--------	--------	-------	-------

STOCK PRICE INDEX WEIGHTED BY MARKET CAPITALIZATION (1991=1000)

	TUESDAY 25/06/2024	WEDNESDAY 26/06/2024	% CHANGE	
			DAY BEFORE	YTD
GENERAL	4352.5	4367.7	0.35%	-1.10%
BANKS	6409.9	6412.9	0.05%	-4.79%
INSURANCE	1352.5	1350.6	-0.14%	5.11%
SERVICES	895.5	897.9	0.27%	2.20%
INDUSTRY	5828.5	5873.4	0.77%	2.92%

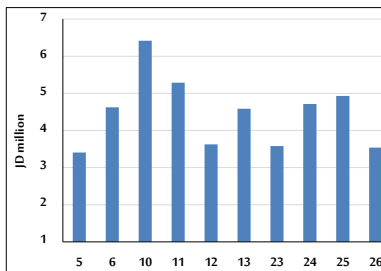
STOCK PRICE MARKET INDEX WEIGHTED BY FREE FLOAT MARKET CAP. (2012=1000)

	TUESDAY 25/06/2024	WEDNESDAY 26/06/2024	% CHANGE	
			DAY BEFORE	YTD
FIRST MARKET	1344.2	1349.8	0.42%	-0.67%
SECOND MARKET	810.1	812.5	0.30%	-5.98%

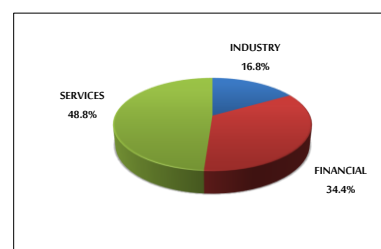
MARKET CAPITALIZATION (JD)

	16,588,085,134	16,644,309,531	0.34%	-1.74%
--	----------------	----------------	-------	--------

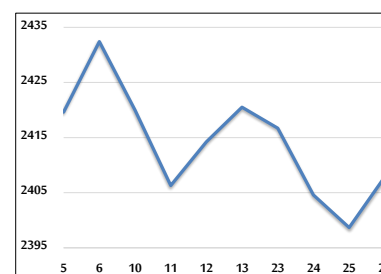
VALUE TRADED FROM 5/6 TO 26/6/2024



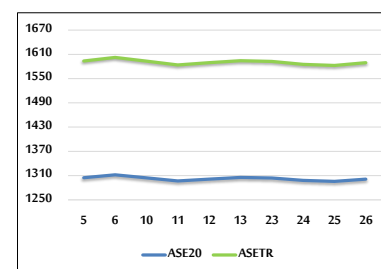
VALUE TRADED BY SECTOR WEDNESDAY 25/6/2024



GENERAL FREE FLOAT PRICE INDEX FROM 5/6 TO 26/6/2024



ASE20 and ASETR FREE FLOAT PRICE INDEX FROM 5/6 TO 26/6/2024



STOCK PRICE INDEX FROM 5/6 TO 26/6/2024

