

Daily Summary for Amman Stock Exchange

VALUE TRADED (JD)

	2023	2024	NET CHANGE	CHANGE (%)
Daily	13,198,154	4,928,261	-8,269,893	-62.66%
Cumulative (2/6-25/6)	74,789,739	53,514,929	-21,274,810	-28.45%
Cumulative (2/1-25/6)	836,077,541	610,291,447	-225,786,094	-27.01%

NO. OF SHARES TRADED

	2023	2024	NET CHANGE	CHANGE (%)
Daily	8,978,193	6,074,338	-2,903,855	-32.34%
Cumulative (2/6-25/6)	60,838,006	40,680,658	-20,157,348	-33.13%
Cumulative (2/1-25/6)	569,191,023	417,217,217	-151,973,806	-26.70%

NO. OF TRANSACTIONS

	2023	2024	NET CHANGE	CHANGE (%)
Daily	3,082	2,158	-924	-29.98%
Cumulative (2/6-25/6)	37,628	28,357	-9,271	-24.64%
Cumulative (2/1-25/6)	361,937	270,917	-91,020	-25.15%

SOME FINANCIAL RATIOS FOR THE ASE (25/6/2024)

SECTOR	P/E	P/BV	DIVIDEND YIELD (%)	TURNOVER (%)
FINANCIAL	8.600	0.746	6.006	0.085
SERVICES	12.088	1.304	5.948	0.156
INDUSTRY	8.063	1.404	8.135	0.071
OVERALL	8.281	0.955	7.106	0.098

STOCK PRICE INDEX WEIGHTED BY FREE FLOAT MARKET CAPITALIZATION (1999=1000)

	MONDAY 24/06/2024	TUESDAY 25/06/2024	% CHANGE	
			DAY BEFORE	YTD
GENERAL	2404.6	2398.7	-0.25%	-1.34%
FINANCIAL	2613.8	2610.1	-0.14%	-4.36%
SERVICES	1692.2	1687.7	-0.27%	2.65%
INDUSTRY	4823.1	4799.0	-0.50%	1.70%

STOCK PRICE INDEX WEIGHTED BY FREE FLOAT MARKET CAPITALIZATION ASE20 (2014=1000)

	1298.0	1295.7	-0.18%	-1.00%
--	--------	--------	--------	--------

Total Return Index ASETR (2021=1074)

	1585.4	1582.5	-0.18%	6.32%
--	--------	--------	--------	-------

STOCK PRICE INDEX WEIGHTED BY MARKET CAPITALIZATION (1991=1000)

	MONDAY 24/06/2024	TUESDAY 25/06/2024	% CHANGE	
			DAY BEFORE	YTD
GENERAL	4358.3	4352.5	-0.13%	-1.44%
BANKS	6408.0	6409.9	0.03%	-4.84%
INSURANCE	1352.8	1352.5	-0.03%	5.26%
SERVICES	896.6	895.5	-0.12%	1.92%
INDUSTRY	5849.0	5828.5	-0.35%	2.13%

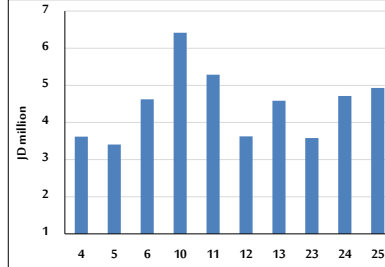
STOCK PRICE MARKET INDEX WEIGHTED BY FREE FLOAT MARKET CAP. (2012=1000)

	MONDAY 24/06/2024	TUESDAY 25/06/2024	% CHANGE	
			DAY BEFORE	YTD
FIRST MARKET	1346.8	1344.2	-0.19%	-1.08%
SECOND MARKET	816.3	810.1	-0.76%	-6.26%

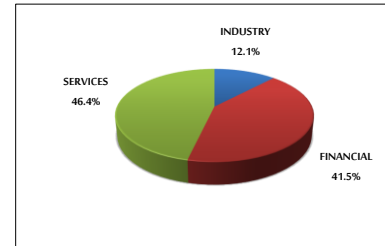
MARKET CAPITALIZATION (JD)

	16,599,060,057	16,588,085,134	-0.07%	-2.07%
--	----------------	----------------	--------	--------

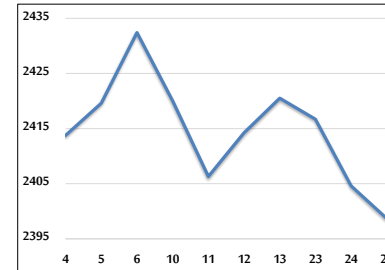
VALUE TRADED FROM 4/6 TO 25/6/2024



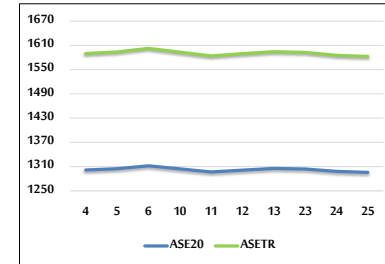
VALUE TRADED BY SECTOR TUESDAY 25/6/2024



GENERAL FREE FLOAT PRICE INDEX FROM 4/6 TO 25/6/2024



ASE20 and ASETR FREE FLOAT PRICE INDEX FROM 4/6 TO 25/6/2024



STOCK PRICE INDEX FROM 4/6 TO 25/6/2024

