

## Daily Summary for Amman Stock Exchange

### VALUE TRADED (JD)

	2023	2024	NET CHANGE	CHANGE (%)
Daily	6,041,187	4,160,008	-1,881,179	-31.14%
Cumulative (1/5-16/5)	62,236,163	39,487,036	-22,749,127	-36.55%
Cumulative (2/1-16/5)	707,751,224	421,411,452	-286,339,772	-40.46%

### NO. OF SHARES TRADED

	2023	2024	NET CHANGE	CHANGE (%)
Daily	5,214,835	4,390,317	-824,518	-15.81%
Cumulative (1/5-16/5)	56,268,257	28,377,142	-27,891,115	-49.57%
Cumulative (2/1-16/5)	460,977,311	321,582,252	-139,395,059	-30.24%

### NO. OF TRANSACTIONS

	2023	2024	NET CHANGE	CHANGE (%)
Daily	3,506	2,863	-643	-18.34%
Cumulative (1/5-16/5)	34,104	24,464	-9,640	-28.27%
Cumulative (2/1-16/5)	291,604	217,887	-73,717	-25.28%

### SOME FINANCIAL RATIOS FOR THE ASE (16/5/2024)

SECTOR	P/E	P/BV	DIVIDEND YIELD (%)	TURNOVER (%)
FINANCIAL	8.609	0.747	6.018	0.056
SERVICES	11.876	1.281	6.054	0.132
INDUSTRY	7.876	1.371	8.329	0.056
OVERALL	8.196	0.945	7.177	0.072

### STOCK PRICE INDEX WEIGHTED BY FREE FLOAT MARKET CAPITALIZATION (1999=1000)

	WEDNESDAY 15/05/2024	THURSDAY 16/05/2024	% CHANGE	
			DAY BEFORE	YTD
GENERAL	2386.5	2393.7	0.30%	-1.54%
FINANCIAL	2612.4	2626.0	0.52%	-3.77%
SERVICES	1667.8	1665.0	-0.17%	1.27%
INDUSTRY	4754.5	4772.4	0.38%	1.14%

### STOCK PRICE INDEX WEIGHTED BY FREE FLOAT MARKET CAPITALIZATION ASE20 (2014=1000)

	1284.6	1287.7	0.25%	-1.61%
--	--------	--------	-------	--------

### Total Return Index ASETR (2021=1074)

	1568.9	1572.8	0.25%	5.67%
--	--------	--------	-------	-------

### STOCK PRICE INDEX WEIGHTED BY MARKET CAPITALIZATION (1991=1000)

	WEDNESDAY 15/05/2024	THURSDAY 16/05/2024	% CHANGE	
			DAY BEFORE	YTD
GENERAL	4299.1	4308.4	0.22%	-2.44%
BANKS	6410.4	6420.6	0.16%	-4.68%
INSURANCE	1323.3	1335.0	0.89%	3.90%
SERVICES	868.3	867.9	-0.05%	-1.23%
INDUSTRY	5696.7	5718.0	0.37%	0.20%

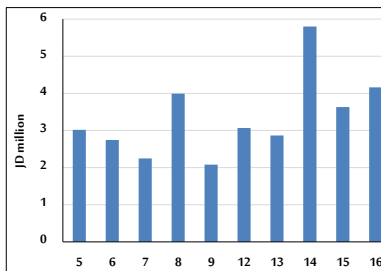
### STOCK PRICE MARKET INDEX WEIGHTED BY FREE FLOAT MARKET CAP. (2012=1000)

	WEDNESDAY 15/05/2024	THURSDAY 16/05/2024	% CHANGE	
			DAY BEFORE	YTD
FIRST MARKET	1333.7	1337.1	0.25%	-1.61%
SECOND MARKET	826.8	840.3	1.63%	-2.77%

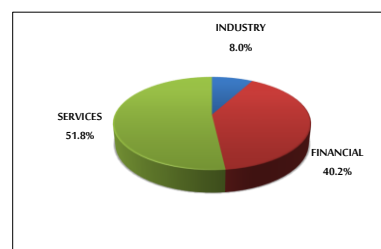
### MARKET CAPITALIZATION (JD)

	16,392,346,582	16,428,482,027	0.22%	-3.01%
--	----------------	----------------	-------	--------

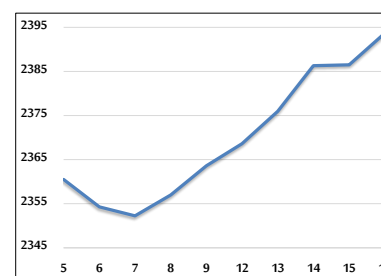
### VALUE TRADED FROM 5/5 TO 16/5/2024



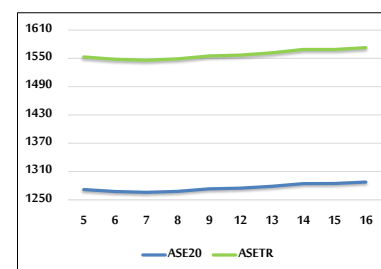
### VALUE TRADED BY SECTOR THURSDAY 16/5/2024



### GENERAL FREE FLOAT PRICE INDEX FROM 5/5 TO 16/5/2024



### ASE20 and ASETR FREE FLOAT PRICE INDEX FROM 5/5 TO 16/5/2024



### STOCK PRICE INDEX FROM 5/5 TO 16/5/2024

