

Daily Summary for Amman Stock Exchange

VALUE TRADED (JD)

	2023	2024	NET CHANGE	CHANGE (%)
Daily	6,086,222	5,798,666	-287,556	-4.72%
Cumulative (1/5-14/5)	50,430,545	31,695,256	-18,735,289	-37.15%
Cumulative (2/1-14/5)	695,945,606	413,619,672	-282,325,934	-40.57%

NO. OF SHARES TRADED

	2023	2024	NET CHANGE	CHANGE (%)
Daily	6,125,588	2,915,589	-3,209,999	-52.40%
Cumulative (1/5-14/5)	45,605,976	20,211,257	-25,394,719	-55.68%
Cumulative (2/1-14/5)	450,315,030	313,416,367	-136,898,663	-30.40%

NO. OF TRANSACTIONS

	2023	2024	NET CHANGE	CHANGE (%)
Daily	2,986	2,744	-242	-8.10%
Cumulative (1/5-14/5)	27,705	19,111	-8,594	-31.02%
Cumulative (2/1-14/5)	285,205	212,534	-72,671	-25.48%

SOME FINANCIAL RATIOS FOR THE ASE (14/5/2024)

SECTOR	P/E	P/BV	DIVIDEND YIELD (%)	TURNOVER (%)
FINANCIAL	8.594	0.745	6.029	0.034
SERVICES	11.872	1.281	6.056	0.096
INDUSTRY	7.883	1.372	8.321	0.043
OVERALL	8.194	0.945	7.180	0.048

STOCK PRICE INDEX WEIGHTED BY FREE FLOAT MARKET CAPITALIZATION (1999=1000)

	MONDAY 13/05/2024	TUESDAY 14/05/2024	% CHANGE	
			DAY BEFORE	YTD
GENERAL	2376.0	2386.3	0.44%	-1.85%
FINANCIAL	2609.6	2611.3	0.06%	-4.31%
SERVICES	1647.4	1661.7	0.87%	1.07%
INDUSTRY	4748.4	4780.3	0.67%	1.31%

STOCK PRICE INDEX WEIGHTED BY FREE FLOAT MARKET CAPITALIZATION ASE20 (2014=1000)

	1278.8	1284.5	0.45%	-1.86%
--	--------	--------	-------	--------

Total Return Index ASETR (2021=1074)

	1561.9	1568.9	0.45%	5.40%
--	--------	--------	-------	-------

STOCK PRICE INDEX WEIGHTED BY MARKET CAPITALIZATION (1991=1000)

	MONDAY 13/05/2024	TUESDAY 14/05/2024	% CHANGE	
			DAY BEFORE	YTD
GENERAL	4278.5	4306.8	0.66%	-2.48%
BANKS	6400.2	6415.9	0.24%	-4.75%
INSURANCE	1327.4	1317.4	-0.76%	2.52%
SERVICES	863.7	866.3	0.30%	-1.40%
INDUSTRY	5645.4	5721.5	1.35%	0.26%

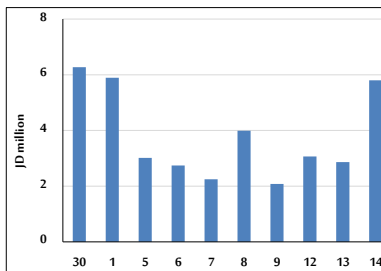
STOCK PRICE MARKET INDEX WEIGHTED BY FREE FLOAT MARKET CAP. (2012=1000)

	MONDAY 13/05/2024	TUESDAY 14/05/2024	% CHANGE	
			DAY BEFORE	YTD
FIRST MARKET	1328.3	1334.1	0.44%	-1.83%
SECOND MARKET	818.3	821.4	0.38%	-4.96%

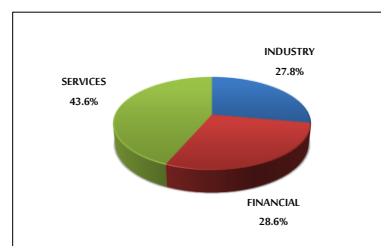
MARKET CAPITALIZATION (JD)

	16,323,464,072	16,418,484,491	0.58%	-3.07%
--	----------------	----------------	-------	--------

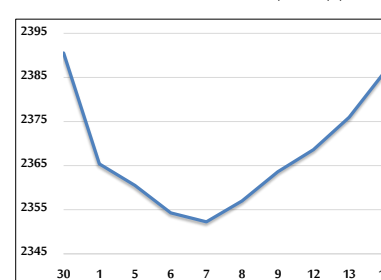
VALUE TRADED FROM 30/4 TO 14/5/2024



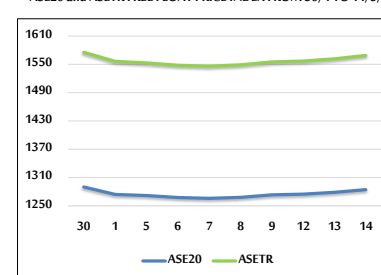
VALUE TRADED BY SECTOR TUESDAY 14/5/2024



GENERAL FREE FLOAT PRICE INDEX FROM 30/4 TO 14/5/2024



ASE20 and ASETR FREE FLOAT PRICE INDEX FROM 30/4 TO 14/5/2024



STOCK PRICE INDEX FROM 30/4 TO 14/5/2024

