

Daily Summary for Amman Stock Exchange

VALUE TRADED (JD)

	2023	2024	NET CHANGE	CHANGE (%)
Daily	8,944,992	2,866,210	-6,078,782	-67.96%
Cumulative (1/5-13/5)	44,344,323	25,896,590	-18,447,733	-41.60%
Cumulative (2/1-13/5)	689,859,384	407,821,006	-282,038,378	-40.88%

NO. OF SHARES TRADED

	2023	2024	NET CHANGE	CHANGE (%)
Daily	7,580,834	1,987,776	-5,593,058	-73.78%
Cumulative (1/5-13/5)	39,480,388	17,295,668	-22,184,720	-56.19%
Cumulative (2/1-13/5)	444,189,442	310,500,778	-133,688,664	-30.10%

NO. OF TRANSACTIONS

	2023	2024	NET CHANGE	CHANGE (%)
Daily	3,770	1,895	-1,875	-49.73%
Cumulative (1/5-13/5)	24,719	16,367	-8,352	-33.79%
Cumulative (2/1-13/5)	282,219	209,790	-72,429	-25.66%

SOME FINANCIAL RATIOS FOR THE ASE (13/5/2024)

SECTOR	P/E	P/BV	DIVIDEND YIELD (%)	TURNOVER (%)
FINANCIAL	8.573	0.744	6.042	0.026
SERVICES	11.797	1.273	6.094	0.057
INDUSTRY	7.792	1.357	8.415	0.024
OVERALL	8.139	0.939	7.227	0.032

STOCK PRICE INDEX WEIGHTED BY FREE FLOAT MARKET CAPITALIZATION (1999=1000)

	SUNDAY 12/05/2024	MONDAY 13/05/2024	% CHANGE	
			DAY BEFORE	YTD
GENERAL	2368.6	2376.0	0.31%	-2.27%
FINANCIAL	2602.6	2609.6	0.27%	-4.37%
SERVICES	1637.2	1647.4	0.63%	0.21%
INDUSTRY	4766.6	4748.4	-0.38%	0.63%

STOCK PRICE INDEX WEIGHTED BY FREE FLOAT MARKET CAPITALIZATION ASE20 (2014=1000)

	1274.9	1278.8	0.31%	-2.29%
--	--------	--------	-------	--------

Total Return Index ASETR (2021=1074)

	1557.2	1561.9	0.31%	4.94%
--	--------	--------	-------	-------

STOCK PRICE INDEX WEIGHTED BY MARKET CAPITALIZATION (1991=1000)

	SUNDAY 12/05/2024	MONDAY 13/05/2024	% CHANGE	
			DAY BEFORE	YTD
GENERAL	4278.6	4278.5	0.00%	-3.12%
BANKS	6396.2	6400.2	0.06%	-4.98%
INSURANCE	1326.2	1327.4	0.09%	3.31%
SERVICES	859.6	863.7	0.48%	-1.70%
INDUSTRY	5659.0	5645.4	-0.24%	-1.07%

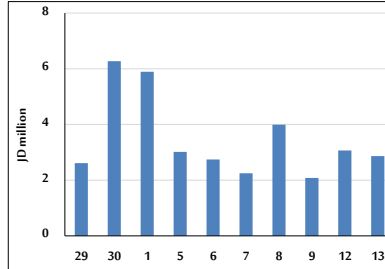
STOCK PRICE MARKET INDEX WEIGHTED BY FREE FLOAT MARKET CAP. (2012=1000)

	SUNDAY 12/05/2024	MONDAY 13/05/2024	% CHANGE	
			DAY BEFORE	YTD
FIRST MARKET	1324.1	1328.3	0.32%	-2.25%
SECOND MARKET	817.5	818.3	0.09%	-5.32%

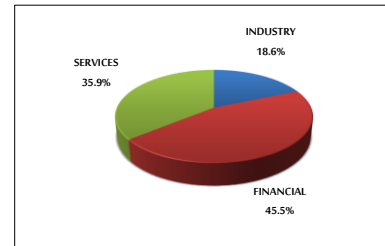
MARKET CAPITALIZATION (JD)

	16,333,795,289	16,323,464,072	-0.06%	-3.63%
--	----------------	----------------	--------	--------

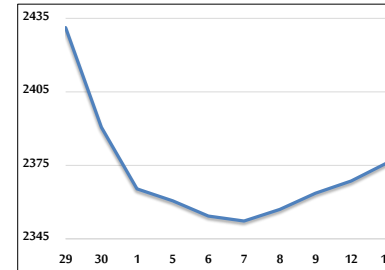
VALUE TRADED FROM 29/4 TO 13/5/2024



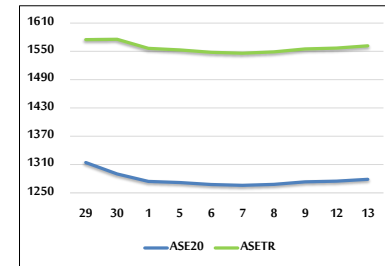
VALUE TRADED BY SECTOR MONDAY 13/5/2024



GENERAL FREE FLOAT PRICE INDEX FROM 29/4 TO 13/5/2024



ASE20 and ASETR FREE FLOAT PRICE INDEX FROM 29/4 TO 13/5/2024



STOCK PRICE INDEX FROM 29/4 TO 13/5/2024

