

## Daily Summary for Amman Stock Exchange

### VALUE TRADED (JD)

	2023	2024	NET CHANGE	CHANGE (%)
Daily	4,496,718	3,989,052	-507,666	-11.29%
Cumulative (1/5-8/5)	26,606,430	17,884,098	-8,722,332	-32.78%
Cumulative (2/1-8/5)	672,121,491	399,808,514	-272,312,977	-40.52%

### NO. OF SHARES TRADED

	2023	2024	NET CHANGE	CHANGE (%)
Daily	4,784,819	2,349,749	-2,435,070	-50.89%
Cumulative (1/5-8/5)	21,832,625	10,952,347	-10,880,278	-49.83%
Cumulative (2/1-8/5)	426,541,679	304,157,457	-122,384,222	-28.69%

### NO. OF TRANSACTIONS

	2023	2024	NET CHANGE	CHANGE (%)
Daily	2,950	2,001	-949	-32.17%
Cumulative (1/5-8/5)	15,148	10,128	-5,020	-33.14%
Cumulative (2/1-8/5)	272,648	203,551	-69,097	-25.34%

### SOME FINANCIAL RATIOS FOR THE ASE (8/5/2024)

SECTOR	P/E	P/BV	DIVIDEND YIELD (%)	TURNOVER (%)
FINANCIAL	8.590	0.745	6.030	0.019
SERVICES	11.662	1.258	6.165	0.091
INDUSTRY	7.614	1.326	8.612	0.059
OVERALL	8.057	0.929	7.300	0.038

### STOCK PRICE INDEX WEIGHTED BY FREE FLOAT MARKET CAPITALIZATION (1999=1000)

	TUESDAY 07/05/2024	WEDNESDAY 08/05/2024	% CHANGE	
			DAY BEFORE	YTD
GENERAL	2352.3	2357.0	0.20%	-3.05%
FINANCIAL	2601.4	2610.6	0.36%	-4.34%
SERVICES	1626.1	1623.7	-0.15%	-1.24%
INDUSTRY	4649.4	4648.7	-0.02%	-1.48%

### STOCK PRICE INDEX WEIGHTED BY FREE FLOAT MARKET CAPITALIZATION ASE20 (2014=1000)

	1265.9	1268.1	0.17%	-3.11%
--	--------	--------	-------	--------

### Total Return Index ASETR (2021=1074)

	1546.2	1548.8	0.17%	4.06%
--	--------	--------	-------	-------

### STOCK PRICE INDEX WEIGHTED BY MARKET CAPITALIZATION (1991=1000)

	TUESDAY 07/05/2024	WEDNESDAY 08/05/2024	% CHANGE	
			DAY BEFORE	YTD
GENERAL	4223.6	4235.7	0.29%	-4.09%
BANKS	6371.8	6407.7	0.56%	-4.87%
INSURANCE	1336.5	1337.3	0.06%	4.08%
SERVICES	855.8	855.6	-0.02%	-2.62%
INDUSTRY	5501.4	5501.4	0.00%	-3.60%

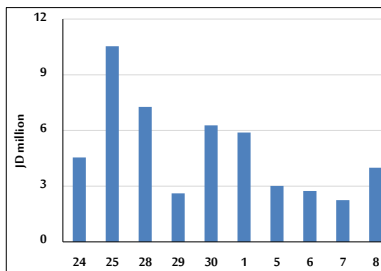
### STOCK PRICE MARKET INDEX WEIGHTED BY FREE FLOAT MARKET CAP. (2012=1000)

	TUESDAY 07/05/2024	WEDNESDAY 08/05/2024	% CHANGE	
			DAY BEFORE	YTD
FIRST MARKET	1315.1	1317.3	0.16%	-3.07%
SECOND MARKET	818.3	822.7	0.54%	-4.81%

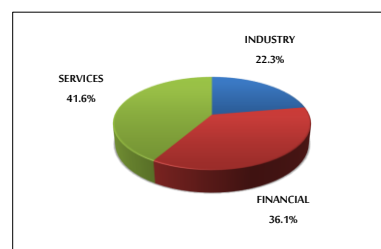
### MARKET CAPITALIZATION (JD)

	16,147,563,761	16,189,120,716	0.26%	-4.43%
--	----------------	----------------	-------	--------

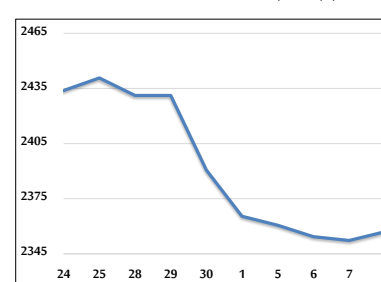
### VALUE TRADED FROM 24/4 TO 8/5/2024



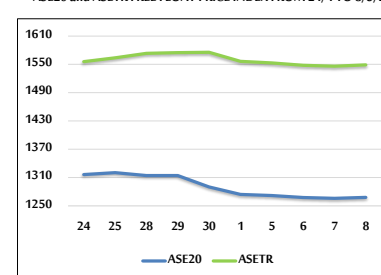
### VALUE TRADED BY SECTOR WEDNESDAY 8/5/2024



### GENERAL FREE FLOAT PRICE INDEX FROM 24/4 TO 8/5/2024



### ASE20 and ASETR FREE FLOAT PRICE INDEX FROM 24/4 TO 8/5/2024



### STOCK PRICE INDEX FROM 24/4 TO 8/5/2024

