

Daily Summary for Amman Stock Exchange

VALUE TRADED (JD)

	2023	2024	NET CHANGE	CHANGE (%)
Daily	4,403,626	2,245,147	-2,158,479	-49.02%
Cumulative (1/5-7/5)	22,109,712	13,895,046	-8,214,666	-37.15%
Cumulative (2/1-7/5)	667,624,773	395,819,462	-271,805,311	-40.71%

NO. OF SHARES TRADED

	2023	2024	NET CHANGE	CHANGE (%)
Daily	4,533,200	1,336,043	-3,197,157	-70.53%
Cumulative (1/5-7/5)	17,047,806	8,602,598	-8,445,208	-49.54%
Cumulative (2/1-7/5)	421,756,860	301,807,708	-119,949,152	-28.44%

NO. OF TRANSACTIONS

	2023	2024	NET CHANGE	CHANGE (%)
Daily	3,172	1,690	-1,482	-46.72%
Cumulative (1/5-7/5)	12,198	8,127	-4,071	-33.37%
Cumulative (2/1-7/5)	269,698	201,550	-68,148	-25.27%

SOME FINANCIAL RATIOS FOR THE ASE (7/5/2024)

SECTOR	P/E	P/BV	DIVIDEND YIELD (%)	TURNOVER (%)
FINANCIAL	8.540	0.741	6.063	0.018
SERVICES	11.680	1.260	6.156	0.030
INDUSTRY	7.615	1.326	8.611	0.031
OVERALL	8.034	0.927	7.321	0.022

STOCK PRICE INDEX WEIGHTED BY FREE FLOAT MARKET CAPITALIZATION (1999=1000)

	MONDAY 06/05/2024	TUESDAY 07/05/2024	% CHANGE	
			DAY BEFORE	YTD
GENERAL	2354.3	2352.3	-0.09%	-3.25%
FINANCIAL	2600.4	2601.4	0.04%	-4.68%
SERVICES	1629.8	1626.1	-0.22%	-1.09%
INDUSTRY	4665.9	4649.4	-0.35%	-1.47%

STOCK PRICE INDEX WEIGHTED BY FREE FLOAT MARKET CAPITALIZATION ASE20 (2014=1000)

	1267.6	1265.9	-0.13%	-3.28%
--	--------	--------	--------	--------

Total Return Index ASETR (2021=1074)

	1548.2	1546.2	-0.13%	3.88%
--	--------	--------	--------	-------

STOCK PRICE INDEX WEIGHTED BY MARKET CAPITALIZATION (1991=1000)

	MONDAY 06/05/2024	TUESDAY 07/05/2024	% CHANGE	
			DAY BEFORE	YTD
GENERAL	4231.3	4223.6	-0.18%	-4.36%
BANKS	6374.3	6371.8	-0.04%	-5.40%
INSURANCE	1336.2	1336.5	0.02%	4.01%
SERVICES	855.9	855.8	-0.02%	-2.60%
INDUSTRY	5525.1	5501.4	-0.43%	-3.60%

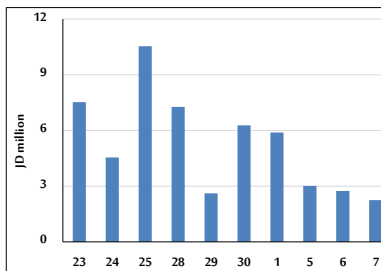
STOCK PRICE MARKET INDEX WEIGHTED BY FREE FLOAT MARKET CAP. (2012=1000)

	MONDAY 06/05/2024	TUESDAY 07/05/2024	% CHANGE	
			DAY BEFORE	YTD
FIRST MARKET	1316.8	1315.1	-0.13%	-3.23%
SECOND MARKET	817.3	818.3	0.12%	-5.32%

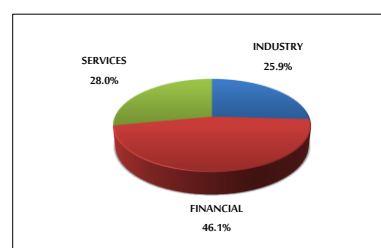
MARKET CAPITALIZATION (JD)

	16,173,554,407	16,147,563,761	-0.16%	-4.67%
--	----------------	----------------	--------	--------

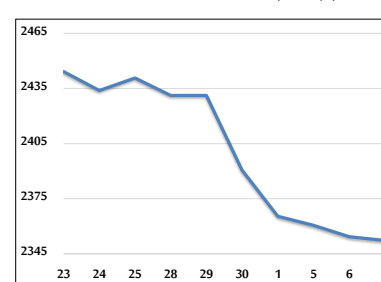
VALUE TRADED FROM 23/4 TO 7/5/2024



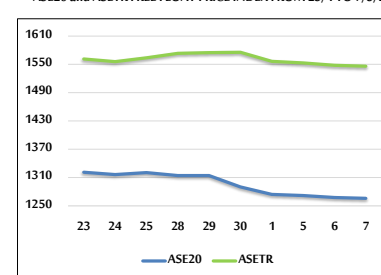
VALUE TRADED BY SECTOR TUESDAY 7/5/2024



GENERAL FREE FLOAT PRICE INDEX FROM 23/4 TO 7/5/2024



ASE20 and ASETR FREE FLOAT PRICE INDEX FROM 23/4 TO 7/5/2024



STOCK PRICE INDEX FROM 23/4 TO 7/5/2024

