

Daily Summary for Amman Stock Exchange

VALUE TRADED (JD)

	2023	2024	NET CHANGE	CHANGE (%)
Daily	6,841,317	5,890,340	-950,977	-13.90%
Cumulative (1/5-1/5)	6,841,317	5,890,340	-950,977	-13.90%
Cumulative (2/1-1/5)	652,356,378	387,814,756	-264,541,622	-40.55%

NO. OF SHARES TRADED

	2023	2024	NET CHANGE	CHANGE (%)
Daily	3,938,878	3,694,402	-244,476	-6.21%
Cumulative (1/5-1/5)	3,938,878	3,694,402	-244,476	-6.21%
Cumulative (2/1-1/5)	408,647,932	296,899,512	-111,748,420	-27.35%

NO. OF TRANSACTIONS

	2023	2024	NET CHANGE	CHANGE (%)
Daily	3,035	2,571	-464	-15.29%
Cumulative (1/5-1/5)	3,035	2,571	-464	-15.29%
Cumulative (2/1-1/5)	260,535	195,994	-64,541	-24.77%

SOME FINANCIAL RATIOS FOR THE ASE (1/5/2024)

SECTOR	P/E	P/BV	DIVIDEND YIELD (%)	TURNOVER (%)
FINANCIAL	8.620	0.748	6.009	0.055
SERVICES	11.752	1.268	6.118	0.070
INDUSTRY	7.640	1.331	8.582	0.075
OVERALL	8.096	0.933	7.267	0.060

STOCK PRICE INDEX WEIGHTED BY FREE FLOAT MARKET CAPITALIZATION (1999=1000)

	TUESDAY 30/04/2024	WEDNESDAY 01/05/2024	% CHANGE	
			DAY BEFORE	YTD
GENERAL	2390.6	2365.4	-1.05%	-2.71%
FINANCIAL	2613.1	2613.8	0.03%	-4.22%
SERVICES	1649.9	1639.2	-0.65%	-0.29%
INDUSTRY	4909.7	4673.1	-4.82%	-0.97%

STOCK PRICE INDEX WEIGHTED BY FREE FLOAT MARKET CAPITALIZATION ASE20 (2014=1000)

	1290.1	1274.3	-1.22%	-2.63%
--	--------	--------	--------	--------

Total Return Index ASETR (2021=1074)

	1575.6	1556.4	-1.22%	4.57%
--	--------	--------	--------	-------

STOCK PRICE INDEX WEIGHTED BY MARKET CAPITALIZATION (1991=1000)

	TUESDAY 30/04/2024	WEDNESDAY 01/05/2024	% CHANGE	
			DAY BEFORE	YTD
GENERAL	4356.6	4255.2	-2.33%	-3.65%
BANKS	6431.2	6438.9	0.12%	-4.41%
INSURANCE	1325.9	1332.2	0.47%	3.67%
SERVICES	865.2	857.1	-0.93%	-2.45%
INDUSTRY	5882.1	5530.8	-5.97%	-3.08%

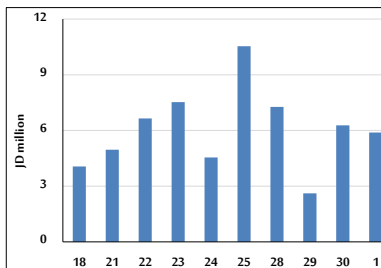
STOCK PRICE MARKET INDEX WEIGHTED BY FREE FLOAT MARKET CAP. (2012=1000)

	TUESDAY 30/04/2024	WEDNESDAY 01/05/2024	% CHANGE	
			DAY BEFORE	YTD
FIRST MARKET	1339.7	1323.7	-1.19%	-2.60%
SECOND MARKET	810.2	814.2	0.49%	-5.80%

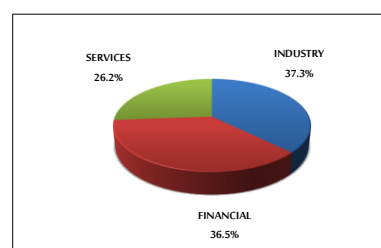
MARKET CAPITALIZATION (JD)

	16,603,977,819	16,255,334,121	-2.10%	-4.04%
--	----------------	----------------	--------	--------

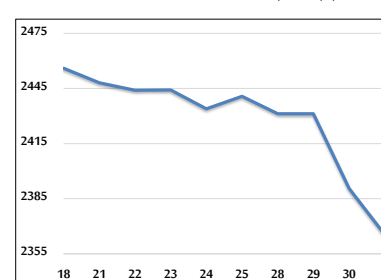
VALUE TRADED FROM 18/4 TO 1/5/2024



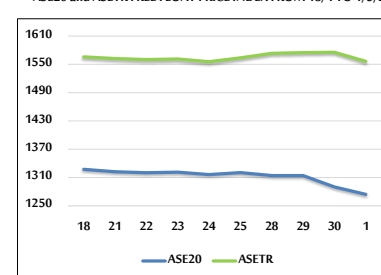
VALUE TRADED BY SECTOR WEDNESDAY 1/5/2024



GENERAL FREE FLOAT PRICE INDEX FROM 18/4 TO 1/5/2024



ASE20 and ASETR FREE FLOAT PRICE INDEX FROM 18/4 TO 1/5/2024



STOCK PRICE INDEX FROM 18/4 TO 1/5/2024

