

Daily Summary for Amman Stock Exchange

VALUE TRADED (JD)

	2023	2024	NET CHANGE	CHANGE (%)
Daily	2,595,940	4,171,593	1,575,653	60.70%
Cumulative (1/4-4/4)	21,148,762	14,053,142	-7,095,620	-33.55%
Cumulative (2/1-4/4)	555,287,059	299,426,850	-255,860,209	-46.08%

NO. OF SHARES TRADED

	2023	2024	NET CHANGE	CHANGE (%)
Daily	1,950,659	3,332,786	1,382,127	70.85%
Cumulative (1/4-4/4)	15,275,171	9,969,122	-5,306,049	-34.74%
Cumulative (2/1-4/4)	355,845,208	240,660,004	-115,185,204	-32.37%

NO. OF TRANSACTIONS

	2023	2024	NET CHANGE	CHANGE (%)
Daily	1,636	2,052	416	25.43%
Cumulative (1/4-4/4)	8,468	6,965	-1,503	-17.75%
Cumulative (2/1-4/4)	222,475	156,698	-65,777	-29.57%

SOME FINANCIAL RATIOS FOR THE ASE (4/4/2024)

SECTOR	P/E	P/BV	DIVIDEND YIELD (%)	TURNOVER (%)
FINANCIAL	8.917	0.761	5.909	0.056
SERVICES	11.945	1.336	5.542	0.052
INDUSTRY	7.382	1.423	0.293	0.050
OVERALL	8.175	0.974	4.117	0.054

STOCK PRICE INDEX WEIGHTED BY FREE FLOAT MARKET CAPITALIZATION (1999=1000)

	WEDNESDAY 03/04/2024	THURSDAY 04/04/2024	% CHANGE	
			DAY BEFORE	YTD
GENERAL	2432.8	2442.0	0.38%	0.44%
FINANCIAL	2637.7	2640.1	0.09%	-3.26%
SERVICES	1744.9	1749.5	0.26%	6.41%
INDUSTRY	4812.2	4871.4	1.23%	3.24%

STOCK PRICE INDEX WEIGHTED BY FREE FLOAT MARKET CAPITALIZATION ASE20 (2014=1000)

	1313.2	1320.1	0.52%	0.86%
--	--------	--------	-------	-------

Total Return Index ASETR (2021=1074)

	1532.8	1544.4	0.76%	3.76%
--	--------	--------	-------	-------

STOCK PRICE INDEX WEIGHTED BY MARKET CAPITALIZATION (1991=1000)

	WEDNESDAY 03/04/2024	THURSDAY 04/04/2024	% CHANGE	
			DAY BEFORE	YTD
GENERAL	4417.6	4441.2	0.53%	0.56%
BANKS	6537.7	6553.3	0.24%	-2.71%
INSURANCE	1312.9	1309.5	-0.26%	1.91%
SERVICES	900.1	894.1	-0.67%	1.76%
INDUSTRY	5898.3	5975.9	1.32%	4.72%

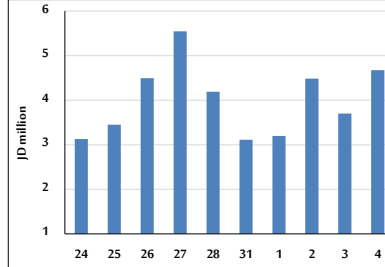
STOCK PRICE MARKET INDEX WEIGHTED BY FREE FLOAT MARKET CAP. (2012=1000)

	WEDNESDAY 03/04/2024	THURSDAY 04/04/2024	% CHANGE	
			DAY BEFORE	YTD
FIRST MARKET	1363.8	1369.8	0.44%	0.80%
SECOND MARKET	831.4	825.4	-0.73%	-4.50%

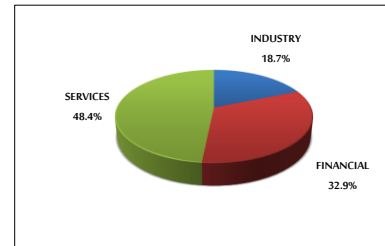
MARKET CAPITALIZATION (JD)

	16,814,201,839	16,893,395,228	0.47%	-0.27%
--	----------------	----------------	-------	--------

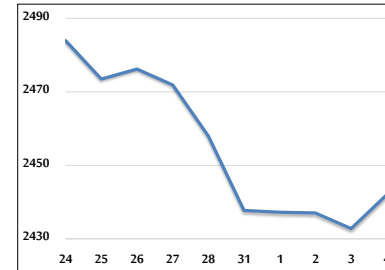
VALUE TRADED FROM 24/3 TO 4/4/2024



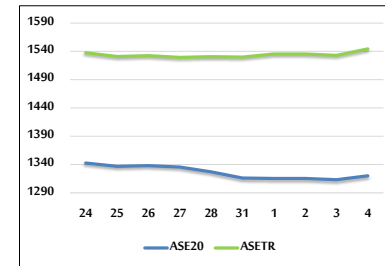
VALUE TRADED BY SECTOR THURSDAY 4/4/2024



GENERAL FREE FLOAT PRICE INDEX FROM 24/3 TO 4/4/2024



ASE20 and ASETR FREE FLOAT PRICE INDEX FROM 24/3 TO 4/4/2024



STOCK PRICE INDEX FROM 24/3 TO 4/4/2024

